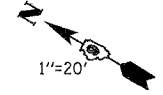


F.A. RTE.	SECTION	COUNTY	TOTAL SHEETS	SHEET NO.
332	31-1-2, 31B	SALINE	199	53
STA.		TO STA.		
FED. ROAD DIST. NO.		ILLINOIS FED. AID PROJECT		

EXIST. CURVE 31  
 PI STA. = 21+97.48  
 $\Delta = 42^\circ 58' 38''$  (LT)  
 $D = 4^\circ 54' 53''$   
 $R = 1,165.83'$   
 $T = 458.97'$   
 $L = 874.48'$   
 $E = 87.09'$   
 $\theta = 4\%$   
 P.C. STA. = 17+38.52  
 P.T. STA. = 26+13.00



PLAN

DATE	BY
7/01	REKING
7/01	REKING
7/01	REKING
7/01	REKING
7/01	REKING
7/01	REKING
7/01	REKING
7/01	REKING
7/01	REKING

PLAN & PROFILE CHECKED BY

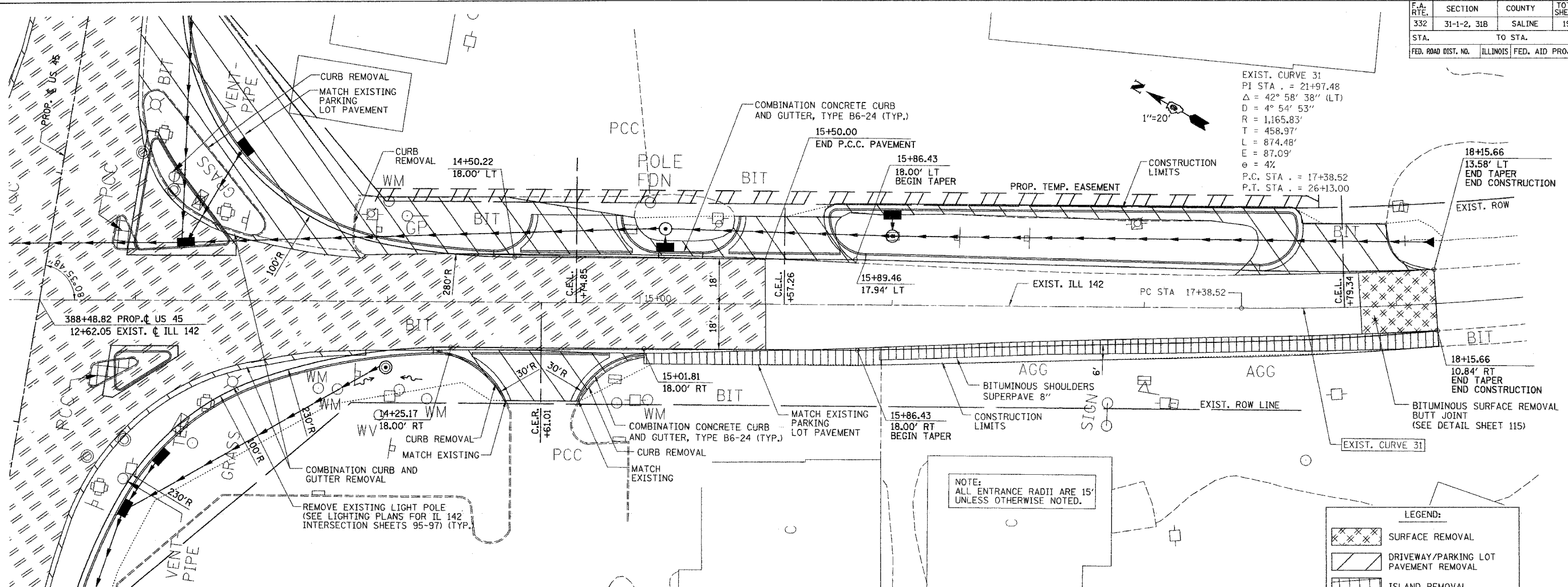
DATE	BY
7/01	REKING
7/01	REKING
7/01	REKING
7/01	REKING
7/01	REKING
7/01	REKING
7/01	REKING
7/01	REKING
7/01	REKING

PROFILE

DATE	BY
7/01	REKING
7/01	REKING
7/01	REKING
7/01	REKING
7/01	REKING
7/01	REKING
7/01	REKING
7/01	REKING
7/01	REKING

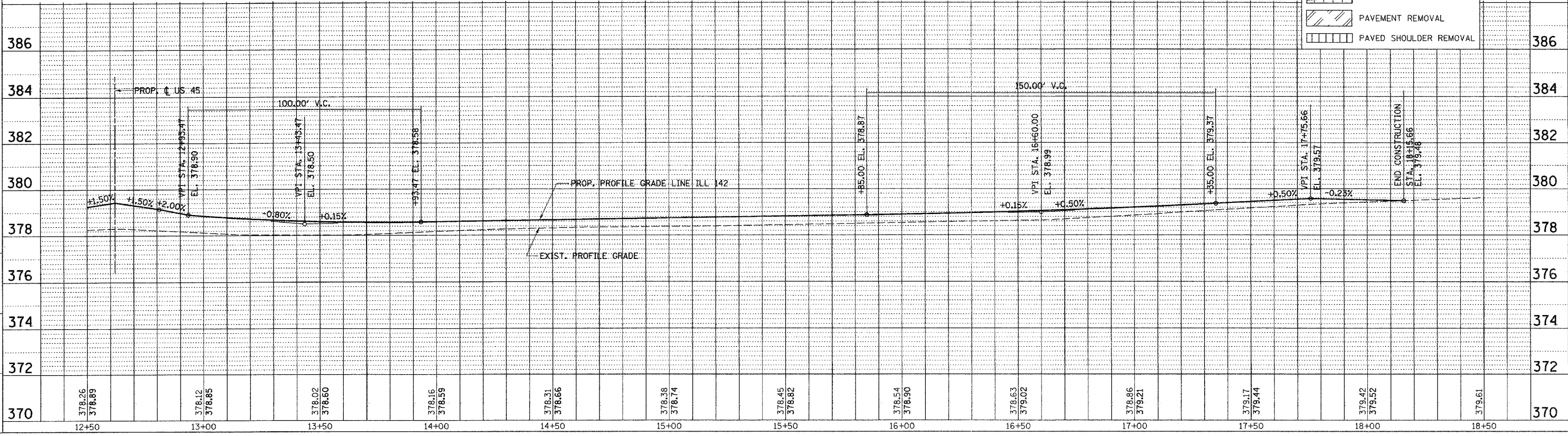
ASST. PROJ. ENGR./PROJ. ENGINEER/ROADWAY/COMMON/

DATE	BY
7/01	REKING
7/01	REKING
7/01	REKING
7/01	REKING
7/01	REKING
7/01	REKING
7/01	REKING
7/01	REKING
7/01	REKING



LEGEND:

	SURFACE REMOVAL
	DRIVEWAY/PARKING LOT PAVEMENT REMOVAL
	ISLAND REMOVAL
	PAVEMENT REMOVAL
	PAVED SHOULDER REMOVAL



PLAN PROFILE - ILL. RTE. 142 STA. 12+50 TO STA. 18+50