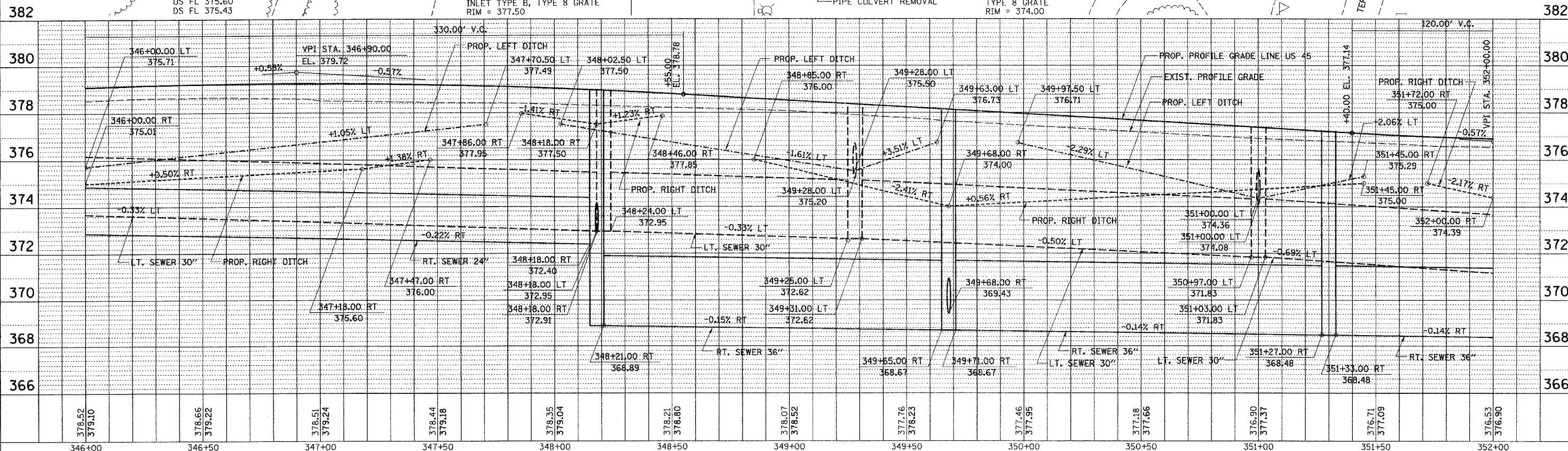
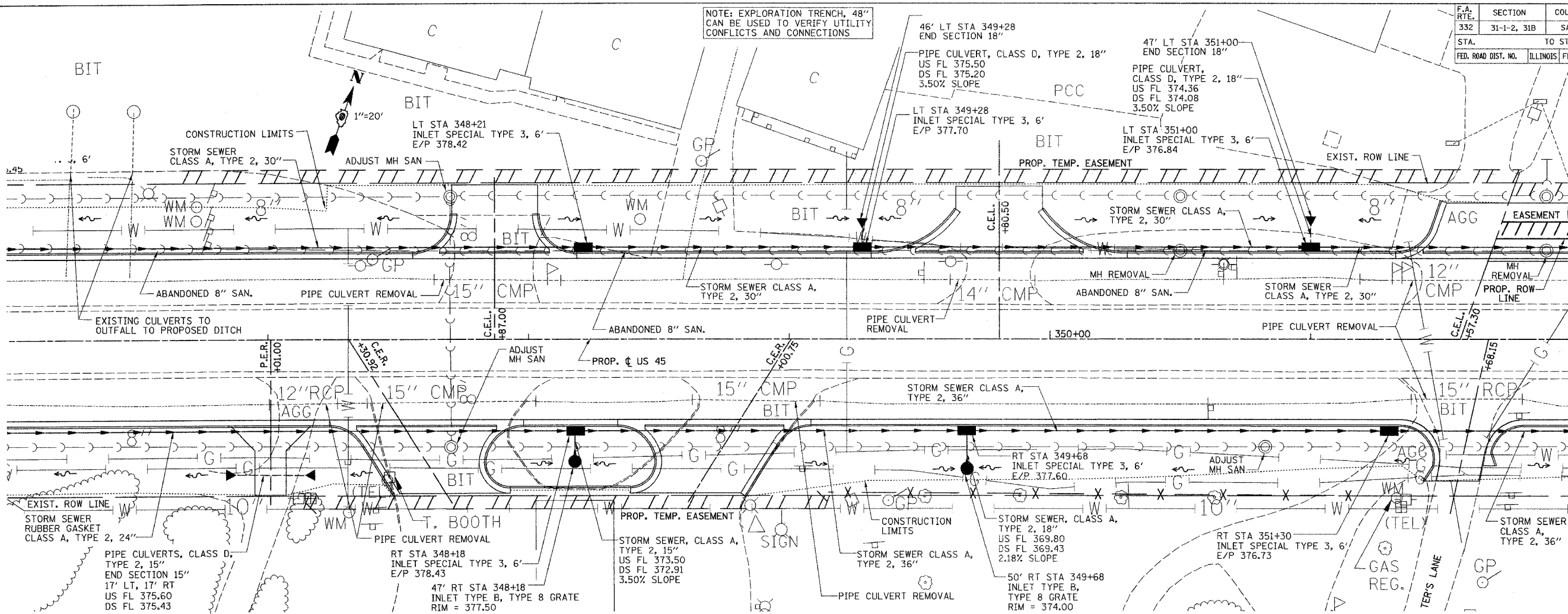


F.A. RTE.	SECTION	COUNTY	TOTAL SHEETS	SHEET NO.
332	31-1-2, 31B	SALINE	199	56
STA.	TO STA.			
FED. ROAD DIST. NO.	ILLINOIS	FED. AID PROJECT		

NOTE: EXPLORATION TRENCH, 48" CAN BE USED TO VERIFY UTILITY CONFLICTS AND CONNECTIONS



DRAINAGE AND UTILITIES PLAN PROFILE - STA. 346+00 TO STA. 352+00

M:\PROJECTS\PROJECTS\PROJ\DRAWING\CONV\CONV  
 Active File: 285004-330p  
 Drawn By: MS  
 Checked By: MT