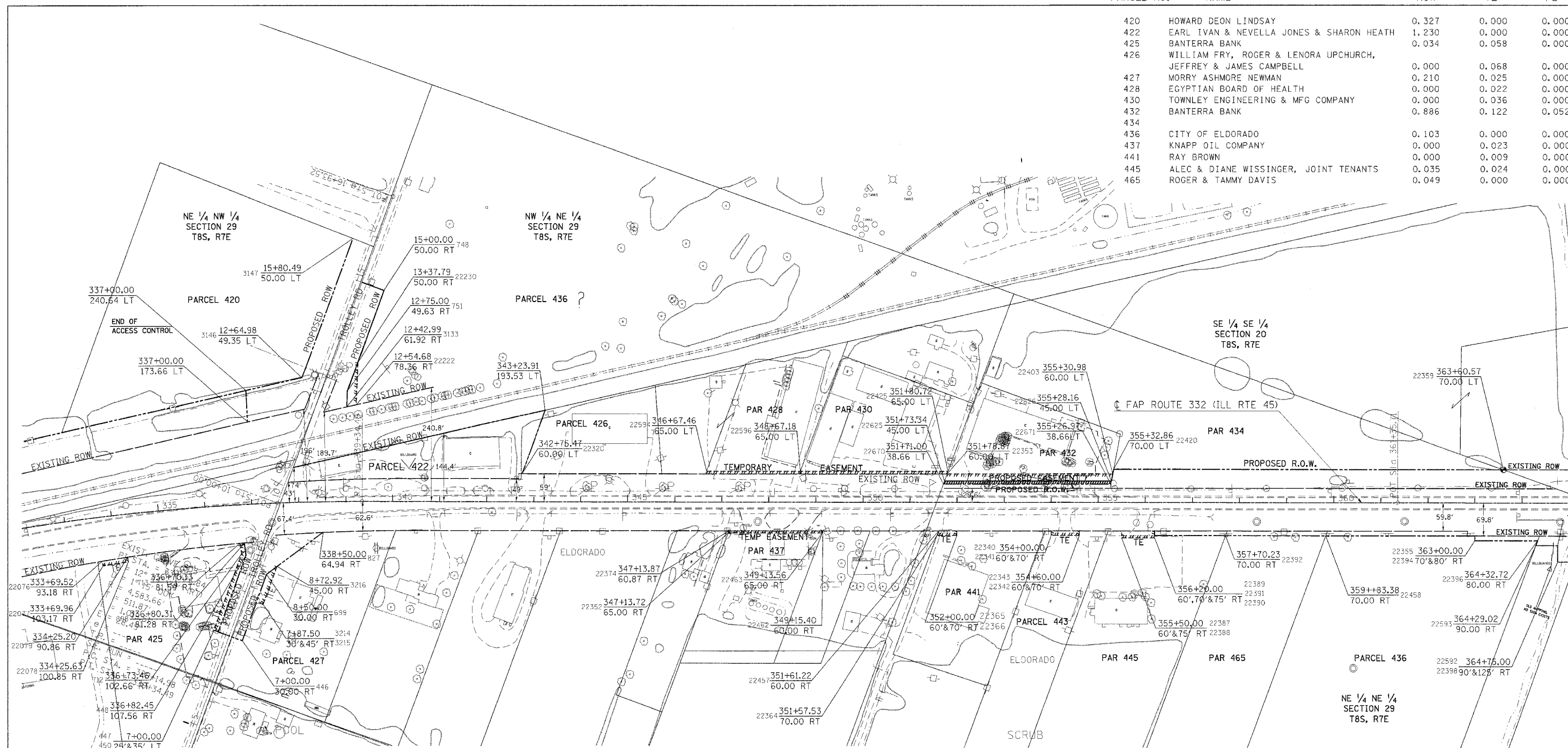


| F.A. NO. | SECTION | COUNTY | TOTAL SHEETS | SHEET NO. |
|----------|-------------|--------|--------------|-----------|
| 332 | 31-1-2, 31B | SALINE | 198 | 70 |

| PARCEL NO. | NAME | ROW | TE | PE |
|------------|--|-------|-------|-------|
| 420 | HOWARD DEON LINDSAY | 0.327 | 0.000 | 0.000 |
| 422 | EARL IVAN & NEVELLA JONES & SHARON HEATH | 1.230 | 0.000 | 0.000 |
| 425 | BANTERRA BANK | 0.034 | 0.058 | 0.000 |
| 426 | WILLIAM FRY, ROGER & LENORA UPCHURCH, JEFFREY & JAMES CAMPBELL | 0.000 | 0.068 | 0.000 |
| 427 | MORRY ASHMORE NEWMAN | 0.210 | 0.025 | 0.000 |
| 428 | EGYPTIAN BOARD OF HEALTH | 0.000 | 0.022 | 0.000 |
| 430 | TOWNLEY ENGINEERING & MFG COMPANY | 0.000 | 0.036 | 0.000 |
| 432 | BANTERRA BANK | 0.886 | 0.122 | 0.052 |
| 434 | | | | |
| 436 | CITY OF ELDORADO | 0.103 | 0.000 | 0.000 |
| 437 | KNAPP OIL COMPANY | 0.000 | 0.023 | 0.000 |
| 441 | RAY BROWN | 0.000 | 0.009 | 0.000 |
| 445 | ALEC & DIANE WISSINGER, JOINT TENANTS | 0.035 | 0.024 | 0.000 |
| 465 | ROGER & TAMMY DAVIS | 0.049 | 0.000 | 0.000 |



POINT COORDINATES

| | | |
|----------------------------------|----------------------------------|----------------------------------|
| PT 446 N 413257.37 E 948651.28 | PT 22079 N 413340.56 E 948360.81 | PT 22391 N 414129.94 E 950397.40 |
| PT 447 N 413257.42 E 948596.28 | PT 22222 N 413809.10 E 948707.30 | PT 22392 N 414181.11 E 950538.65 |
| PT 448 N 413430.42 E 948596.46 | PT 22230 N 413894.99 E 948680.02 | PT 22394 N 414352.27 E 951040.16 |
| PT 450 N 413257.43 E 948586.28 | PT 22320 N 413794.24 E 949088.98 | PT 22396 N 414397.56 E 951164.91 |
| PT 699 N 413453.77 E 948584.23 | PT 22340 N 414064.41 E 950187.14 | PT 22398 N 414369.69 E 951220.01 |
| PT 699 N 413407.37 E 948651.43 | PT 22341 N 414055.01 E 950190.55 | PT 22403 N 414231.89 E 950267.79 |
| PT 712 N 413431.48 E 948586.46 | PT 22342 N 414075.45 E 950246.96 | PT 22420 N 414221.85 E 950269.42 |
| PT 713 N 413449.56 E 948575.16 | PT 22343 N 414084.85 E 950243.56 | PT 22425 N 414107.26 E 949938.40 |
| PT 748 N 414057.20 E 948680.27 | PT 22352 N 413825.98 E 949543.59 | PT 22457 N 413983.09 E 949962.64 |
| PT 751 N 413830.83 E 948679.54 | PT 22353 N 414101.93 E 949938.37 | PT 22458 N 414253.70 E 950739.05 |
| PT 827 N 413532.53 E 948732.51 | PT 22355 N 414361.67 E 951036.75 | PT 22462 N 413899.37 E 949731.52 |
| PT 3133 N 413798.51 E 948689.88 | PT 22359 N 414513.93 E 951045.91 | PT 22463 N 413894.04 E 949731.49 |
| PT 3146 N 413823.71 E 948579.29 | PT 22364 N 413972.43 E 949962.57 | PT 22592 N 414402.59 E 951208.07 |
| PT 3147 N 414137.84 E 948580.39 | PT 22365 N 413996.30 E 949999.10 | PT 22593 N 414386.90 E 951164.84 |
| PT 3214 N 413344.85 E 948666.37 | PT 22366 N 413986.90 E 950002.51 | PT 22594 N 413932.45 E 949455.83 |
| PT 3215 N 413344.87 E 948651.37 | PT 22374 N 413831.31 E 949543.63 | PT 22596 N 414000.47 E 949643.60 |
| PT 3216 N 413430.27 E 948666.46 | PT 22387 N 414115.50 E 950320.18 | PT 22625 N 414085.94 E 949938.27 |
| PT 22076 N 413314.03 E 948313.07 | PT 22388 N 414101.40 E 950333.28 | PT 22626 N 414206.79 E 950271.88 |
| PT 22077 N 413305.32 E 948317.99 | PT 22389 N 414139.34 E 950353.99 | PT 22670 N 414079.18 E 949938.23 |
| PT 22078 N 413331.78 E 948365.61 | PT 22390 N 414125.24 E 950399.10 | PT 22671 N 414200.42 E 950272.92 |

RIGHT OF WAY PLANS
FAP ROUTE 332

PROJECT NON-FA SECTION 31-1-1

STATION 335+00 TO

STATION 391+89.14

COUNTY SALINE

SCALE 1"=100' SHEET 2 OF 3

JOB NO.: B-99-111-00

DATE REVISED BY DATE DRAWN BY

DATE
REVISED BY
DATE
DRAWN BY

