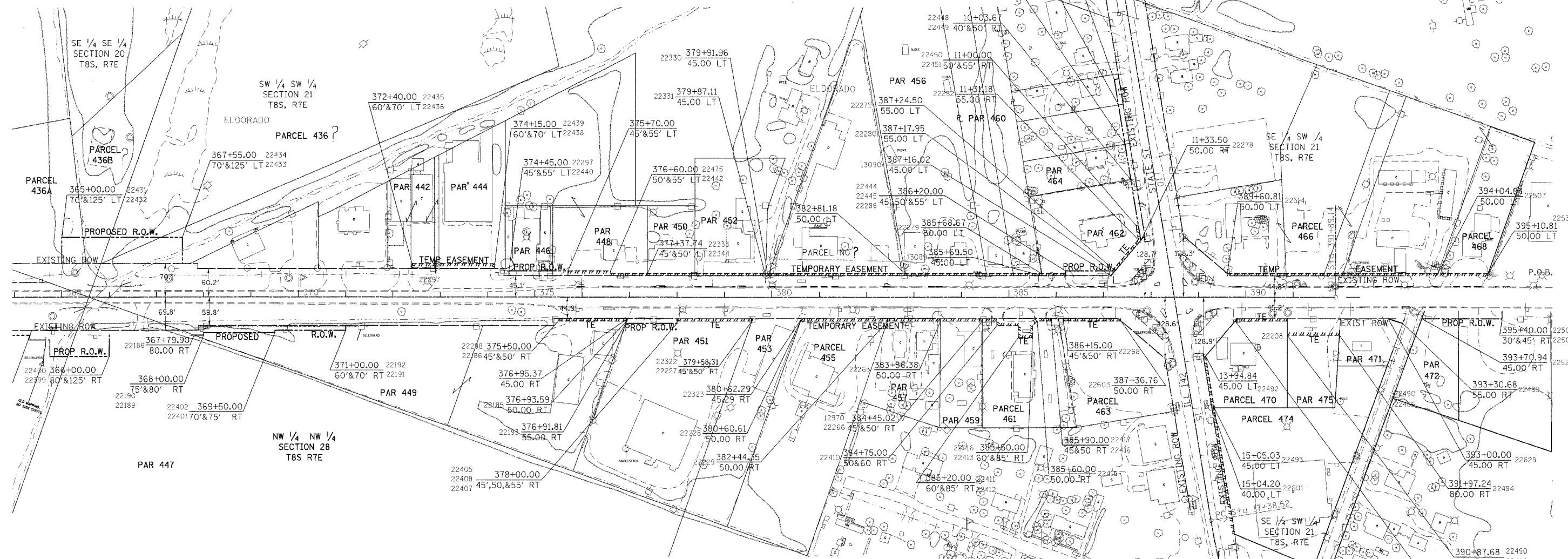


PARCEL NO.	NAME	ROW	TE	PE	PARCEL NO.	NAME	ROW	TE	PE	PARCEL NO.	NAME	ROW	TE	PE
436A	JONES, ET. AL.	0.061	0.000	0.000	459	JIMMY DEAN LAMPERT	0.000	0.010	0.000	466	FIRST BANK OF ELDORADO	0.000	0.028	0.000
436B	CITY OF ELDORADO	0.055	0.000	0.000	460	MAQBOOL AHMAD	0.000	0.013	0.000	468	L. RUSSELL CORPORATION	0.000	0.035	0.000
438	BOB K. MURRAY	0.055	0.000	0.000	461	HARDEE'S FOOD SYSTEMS, INC	0.000	0.052	0.000	470	MB PROPERTIES-HUCK'S FOOD & FUEL STORE 197	0.000	0.012	0.000
442	CECIL UZZLE	0.000	0.013	0.000	462	JEFFREY CAIN	0.000	0.019	0.000	471	MB PROPERTIES-MEDICAP PHARMACY	0.004	0.031	0.000
444	RICHARD & DIANNA UZZLE	0.000	0.027	0.000	463	GOLDEN ARCH LTD PARTNERSHIP	0.000	0.006	0.000	472	PARTNERS IN ELDORADO INC.	0.012	0.000	0.000
446	SHARON S. BOGCESS	0.021	0.000	0.000	464A	FETCHO	0.017	0.000	0.000	473	ELDORADO OFFICE, L.C.C.	0.031	0.000	0.000
447	WILLIAM AND LAVERNE FRY & MARY RODGERS, JOINT TENANTS	0.082	0.000	0.000	464	FETCHO	0.037	0.000	0.000	474	MB PROPERTIES-BIG JOHN'S SUPERSTORE	0.000	0.035	0.000
448	LEON & JANET RUSSELL	0.028	0.009	0.000						475	MB PROPERTIES-COMMON ACCESS AREA	0.000	0.089	0.000
449	DANIEL CUMMINS & DAVID NAAS	0.094	0.017	0.000										
450	ELIZABETH A. COOLEY	0.000	0.011	0.000										
451	SHERRILL L. CANTRELL	0.024	0.018	0.000										
452	W. J. & MARGARET MILLS	0.000	0.017	0.000										
453	DON EWAN	0.000	0.012	0.000										
455	ROBERT & JUDITH STEINBROOK	0.000	0.021	0.000										
456	ELDORADO ENTERPRISES, INC	0.000	0.053	0.000										
457	LEO & BILLIE BOGCESS	0.000	0.013	0.000										



POINT COORDINATES

PT 12970 N 415117.19 E 953044.49	PT 22282 N 415384.38 E 953296.57	PT 22416 N 415161.96 E 953182.45	PT 22492 N 415203.60 E 953512.99
PT 13089 N 415244.26 E 953130.76	PT 22286 N 415270.89 E 953174.82	PT 22417 N 415166.66 E 953180.74	PT 22493 N 415107.57 E 953567.01
PT 13090 N 415294.22 E 953268.37	PT 22297 N 414860.51 E 952073.76	PT 22431 N 414561.52 E 951176.97	PT 22494 N 415340.99 E 953763.47
PT 22185 N 414856.05 E 952339.85	PT 22298 N 414811.74 E 952203.17	PT 22432 N 414613.21 E 951158.20	PT 22499 N 415410.02 E 953880.37
PT 22186 N 414807.04 E 952204.88	PT 22322 N 414951.69 E 952588.64	PT 22433 N 414700.24 E 951397.89	PT 22502 N 415490.86 E 954073.71
PT 22188 N 414516.04 E 951491.25	PT 22323 N 414986.61 E 952684.81	PT 22434 N 414648.54 E 951416.66	PT 22503 N 415504.98 E 954068.59
PT 22189 N 414522.90 E 951510.15	PT 22330 N 415047.17 E 952587.89	PT 22435 N 414804.65 E 951875.95	PT 22507 N 415534.06 E 953914.34
PT 22190 N 414527.60 E 951508.44	PT 22331 N 415045.51 E 952583.33	PT 22436 N 414814.05 E 951872.54	PT 22514 N 415382.50 E 953496.87
PT 22191 N 414634.68 E 951788.72	PT 22333 N 414960.41 E 952348.93	PT 22438 N 414873.77 E 952037.04	PT 22516 N 415563.33 E 953201.65
PT 22192 N 414644.08 E 951785.31	PT 22344 N 414965.11 E 952347.22	PT 22439 N 414864.37 E 952040.45	PT 22517 N 415568.24 E 953210.36
PT 22193 N 414850.74 E 952339.89	PT 22399 N 414412.35 E 951337.51	PT 22440 N 414869.91 E 952070.35	PT 22522 N 415684.20 E 953133.66
PT 22201 N 415300.30 E 953548.84	PT 22400 N 414454.65 E 951322.15	PT 22442 N 414943.28 E 952272.45	PT 22523 N 415689.10 E 953142.38
PT 22226 N 415242.80 E 953564.19	PT 22401 N 414578.79 E 951649.43	PT 22444 N 415261.49 E 953178.23	PT 22525 N 415433.16 E 953914.80
PT 22227 N 414946.39 E 952588.69	PT 22402 N 414583.49 E 951647.73	PT 22445 N 415266.19 E 953176.52	PT 22532 N 415570.19 E 954013.85
PT 22228 N 414981.30 E 952684.84	PT 22405 N 414897.06 E 952438.17	PT 22448 N 415502.87 E 953247.13	PT 22599 N 414877.89 E 953696.67
PT 22229 N 415044.00 E 952857.55	PT 22407 N 414887.66 E 952441.58	PT 22449 N 415497.97 E 953238.41	PT 22601 N 415105.84 E 953562.25
PT 22265 N 415082.23 E 952962.86	PT 22408 N 414892.36 E 952439.88	PT 22450 N 415414.01 E 953285.64	PT 22603 N 415212.04 E 953320.40
PT 22268 N 415170.49 E 953205.95	PT 22410 N 415113.31 E 953077.77	PT 22451 N 415411.56 E 953281.28	PT 22629 N 415408.95 E 953848.12
PT 22275 N 415306.56 E 953273.05	PT 22411 N 415128.67 E 953120.06	PT 22475 N 414933.88 E 952275.96	PT 22679 N 415641.78 E 953168.00
PT 22278 N 415384.81 E 953302.07	PT 22412 N 415105.17 E 953128.60	PT 22486 N 415303.60 E 953660.49	PT 22680 N 415636.88 E 953160.28
PT 22279 N 415248.68 E 953126.27	PT 22413 N 415115.41 E 953156.80	PT 22490 N 415331.80 E 953650.25	
PT 22280 N 415304.32 E 953266.89	PT 22415 N 415151.72 E 953154.25	PT 22491 N 415294.15 E 953546.57	

RIGHT OF WAY PLANS
 EAP ROUTE 332
 PROJECT NON-EA SECTION 31-1-1
 STATION 335+00 TO
 STATION 391+89.14
 COUNTY SALINE
 SCALE 1"=100' SHEET 3 OF 3

DATE _____
 REVISED BY _____
 DATE _____
 DRAWN BY _____

DATE TIME
 DON-SPEC
 JEFF-FRIB
 JEFF-FRIB