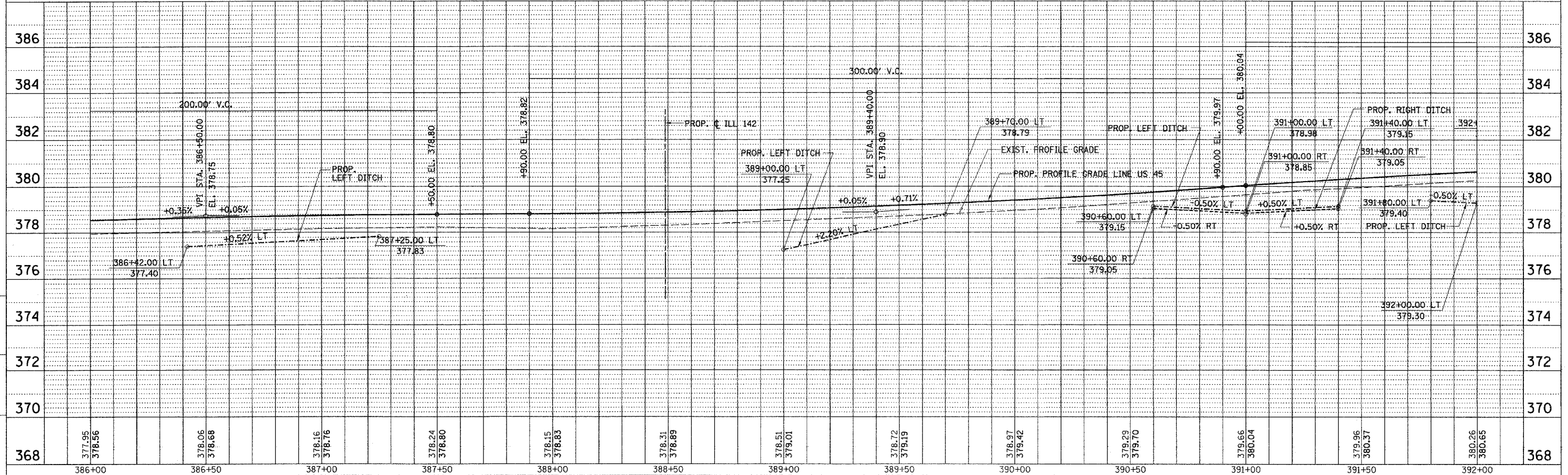
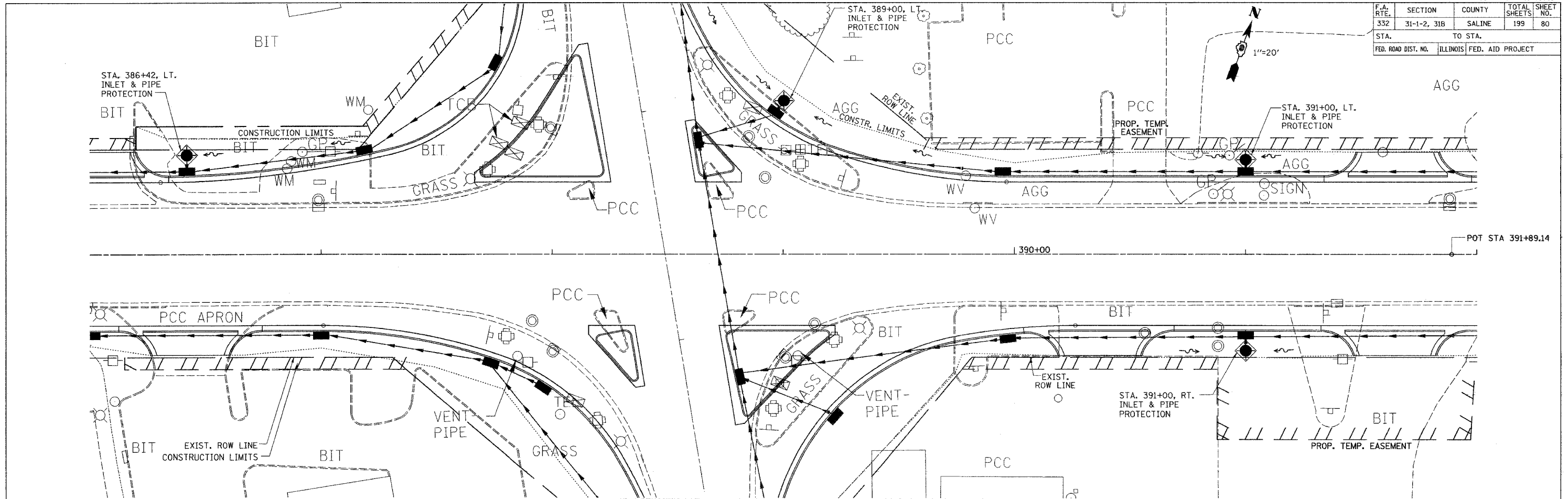


F.A. RTE.	SECTION	COUNTY	TOTAL SHEETS	SHEET NO.
332	31-1-2, 31B	SALINE	199	80
STA.	TO STA.			
FED. ROAD DIST. NO.	ILLINOIS	FED. AID PROJECT		



CHECKED BY: J.M.  
 DRAWN BY: S.K.  
 PROJECT: I-74/PROJ 3535/ROADWAY/CONCRETE  
 DATE: 02/04/09

TEMPORARY EROSION CONTROL PLAN - STA. 386+00 TO STA. 392+00