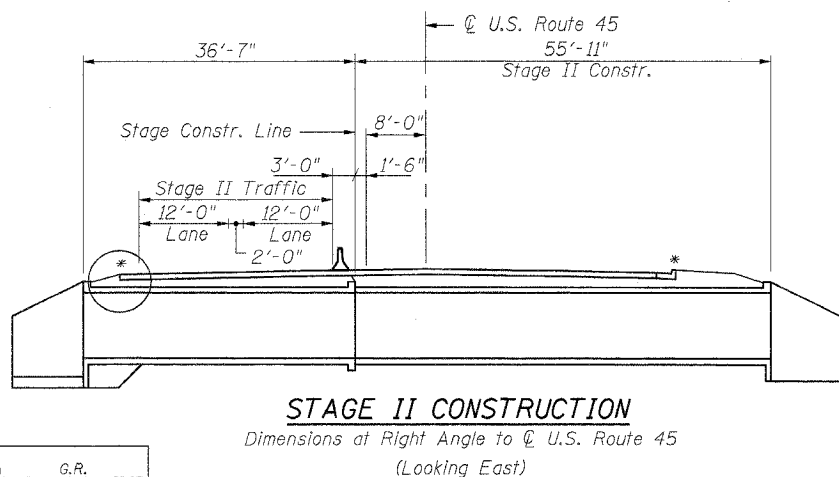
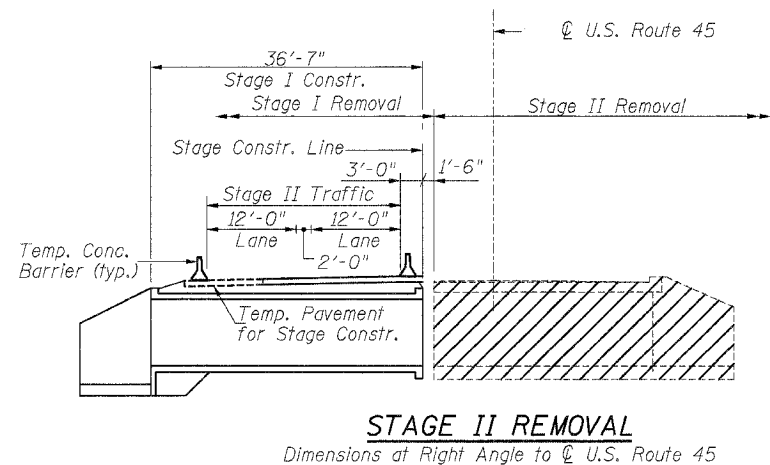
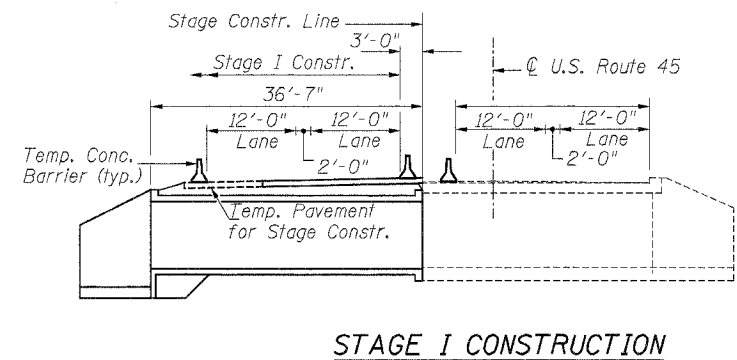
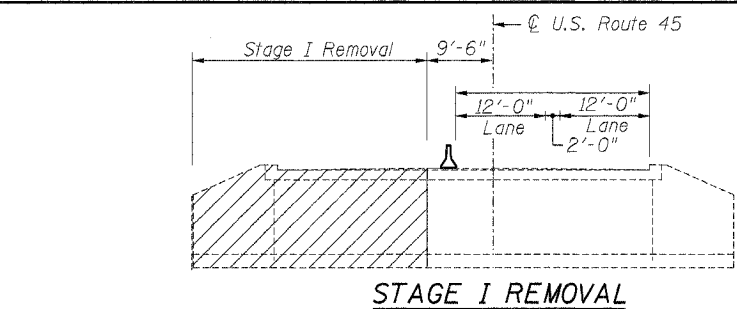


STATE OF ILLINOIS  
DEPARTMENT OF TRANSPORTATION

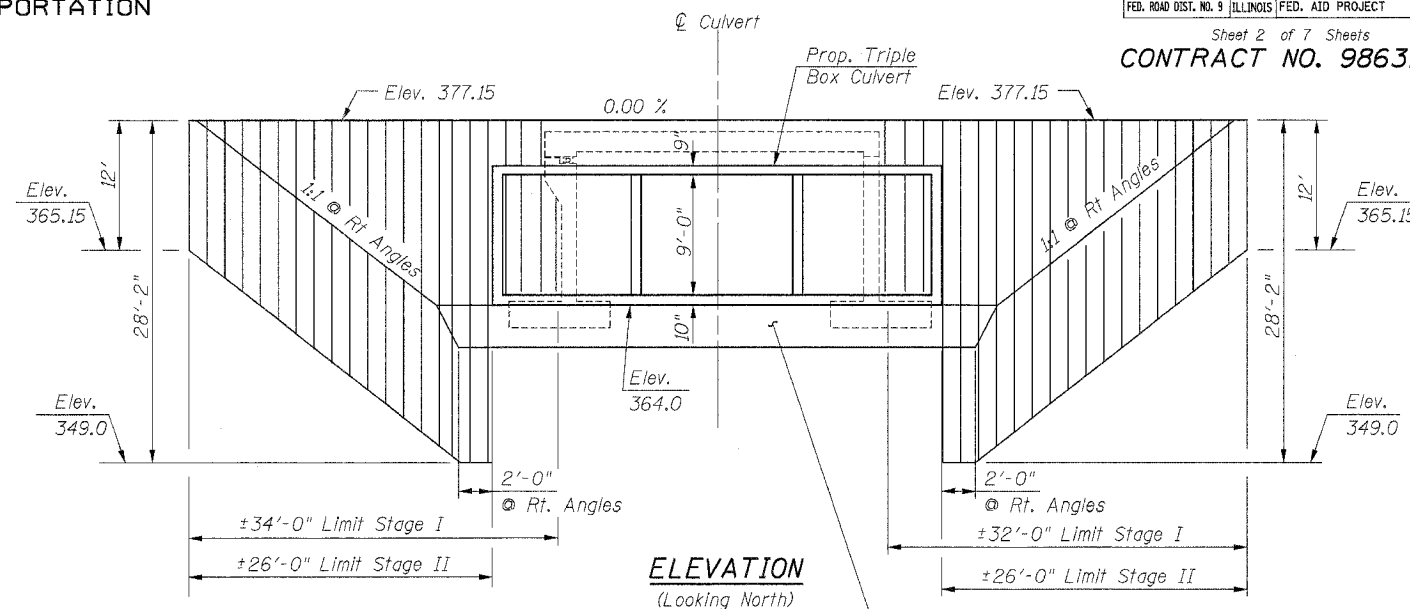
F.A.P. RTE.	SECTION	COUNTY	TOTAL SHEETS	SHEET NO.
332	31-1, 42-1	SALINE	199	99
STA.		TO STA.		
FED. ROAD DIST. NO. 9 ILLINOIS FED. AID PROJECT				

Sheet 2 of 7 Sheets  
CONTRACT NO. 98631



DESIGNED	G.R.
CHECKED	T.F.
DRAWN	M.D.
CHECKED	G.R.

Hatched Areas indicate  
removal of existing structures  
\*Construct C & G before opening  
Rdwy to permanent traffic.



Remove ±3' of soil below proposed  
bottom of culvert and spread footings  
for T-type wingwalls and backfill  
with 7" of Porous Granular Embankment  
(CA-6) and 2'-6" of Breaker-Run Crushed  
Stone.

**MATERIAL REQUIREMENTS**

Minimum Required Section Modulus of Temporary  
Sheet Piling: 26.4 in<sup>3</sup>/Ft  
fy= 38.5 Ksi (Temporary Sheet Piling)  
fy= 36 Ksi (Structural Steel M270 Gr. 250)  
Embedment Depth = ±12'

**TEMPORARY SHEET PILING DETAIL**

If the contractor chooses to alter the temporary  
cantilevered sheet piling design requirements shown  
on the plans for lesser design requirements, then  
full design submittals with the required seals will be  
expected by the Department for review and approval.

**STAGE CONSTRUCTION DETAILS**  
**U.S. ROUTE 45 OVER**  
**TRIBUTARY TO MIDDLE FORK OF SALINE RIVER**  
**F.A.P. ROUTE 332 SECTION 31-1, 42-1**  
**SALINE COUNTY**  
**STATION 365+86.00**  
**STRUCTURE NUMBER 083-2014**

