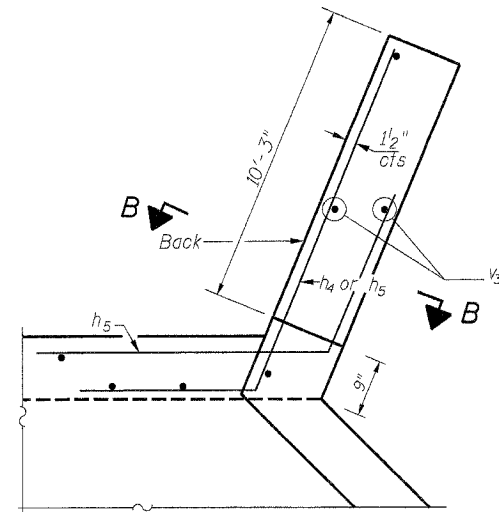
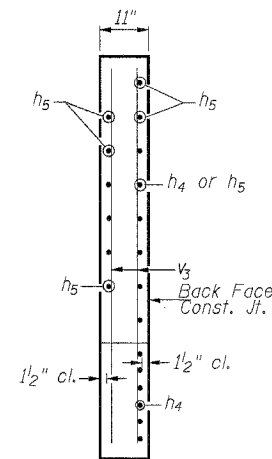


F.A.P. No.	SECTION	COUNTY	TOTAL SHEETS
332	31-1, 42-1	SALINE	199
STA.	TO STA.		
FED. ROAD DIST. NO. 9 ILLINOIS FED. AID PROJECT			

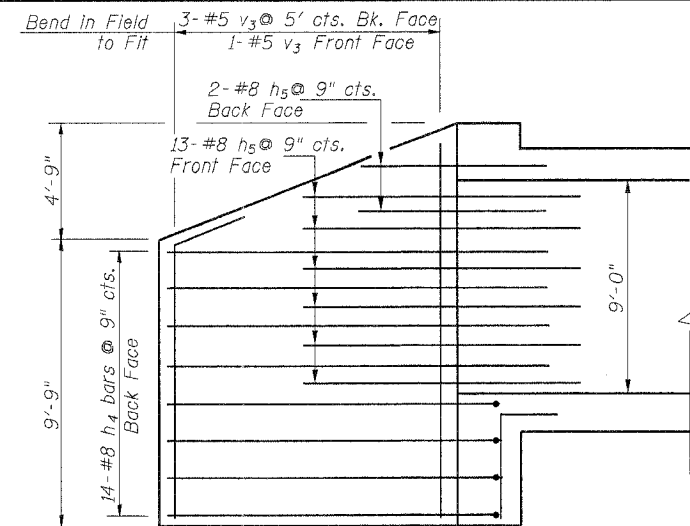
Sheet 5 of 7 Sheets
CONTRACT NO. 98631



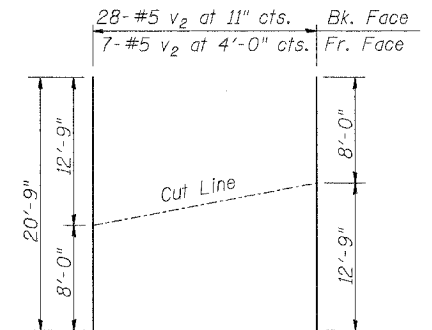
SHORT WING DETAIL



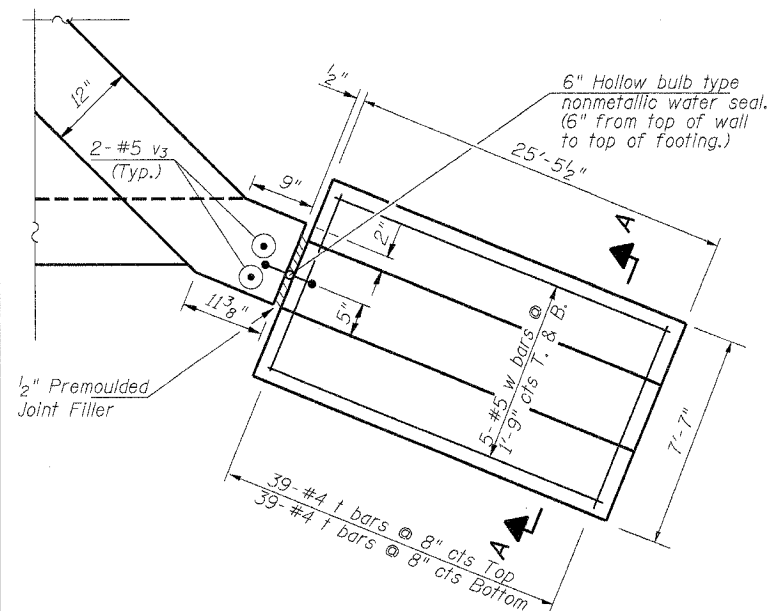
SEC. B-B



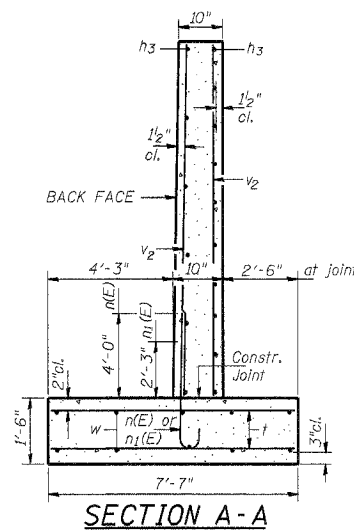
SHORT WING



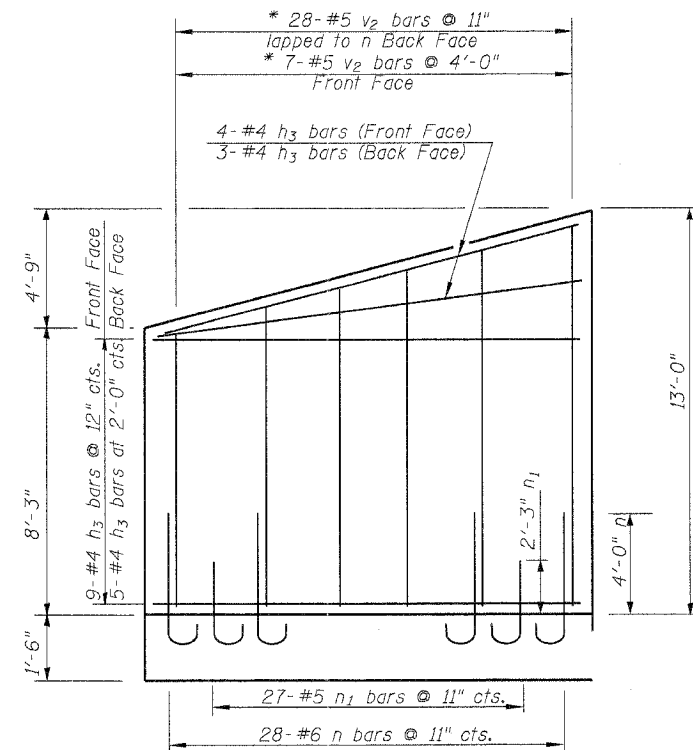
***FIELD CUTTING DIAGRAM BAR v2**
 Order v2 bars full length. Cut to fit as shown and use remainder in other wing walls.



LONG WING DETAIL



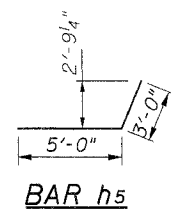
SECTION A-A



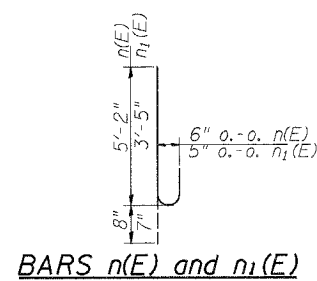
LONG WING

BILL OF MATERIAL

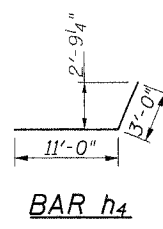
Bar No.	Size	Length	Shape
a	572	#8	43'-10"
a1	420	#8	36'-0"
a2	176	#4	7'-9"
d	72	#4	5'-6"
d1	16	#5	4'-3"
d2	8	#5	5'-10"
d3	8	#5	7'-6"
d4	16	#5	4'-7"
d5	8	#5	6'-2"
d6	8	#5	7'-10"
h	284	#5	26'-8"
h1	426	#5	27'-4"
h2	14	#6	42'-0"
h3	40	#4	25'-3"
h4	28	#8	14'-0"
h5	30	#8	8'-0"
h6	8	#7	42'-0"
n(E)	56	#6	5'-10"
n1(E)	54	#5	4'-0"
s	84	#4	4'-11"
s1	42	#4	4'-9"
t	156	#4	7'-3"
v	840	#4	9'-0"
v1	840	#4	2'-8"
v2	35	#5	20'-9"
v3	12	#5	14'-2"
w	20	#5	25'-3"
Concrete Box Culvert		Cu. Yd.	421.4
Reinforcement Bars		Pound	142,020
Reinforcement Bars, Epoxy Coated		Pound	720
Bar Splicers		Each	142



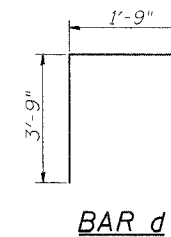
BAR h5



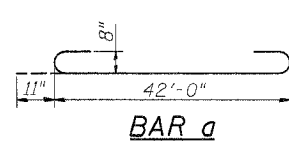
BARS n(E) and n1(E)



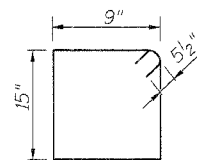
BAR h4



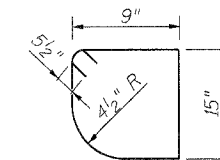
BAR d



BAR a



BAR s



BAR s1

WINGWALL DETAILS
U.S. ROUTE 45 OVER
TRIBUTARY TO MIDDLE FORK OF SALINE RIVER
F.A.P. ROUTE 332 SECTION 31-1, 42-1
SALINE COUNTY
STATION 365+86.00
STRUCTURE NUMBER 083-2014

DESIGNED	K.P.S.
CHECKED	T.F.
DRAWN	T.F.
CHECKED	K.P.S.