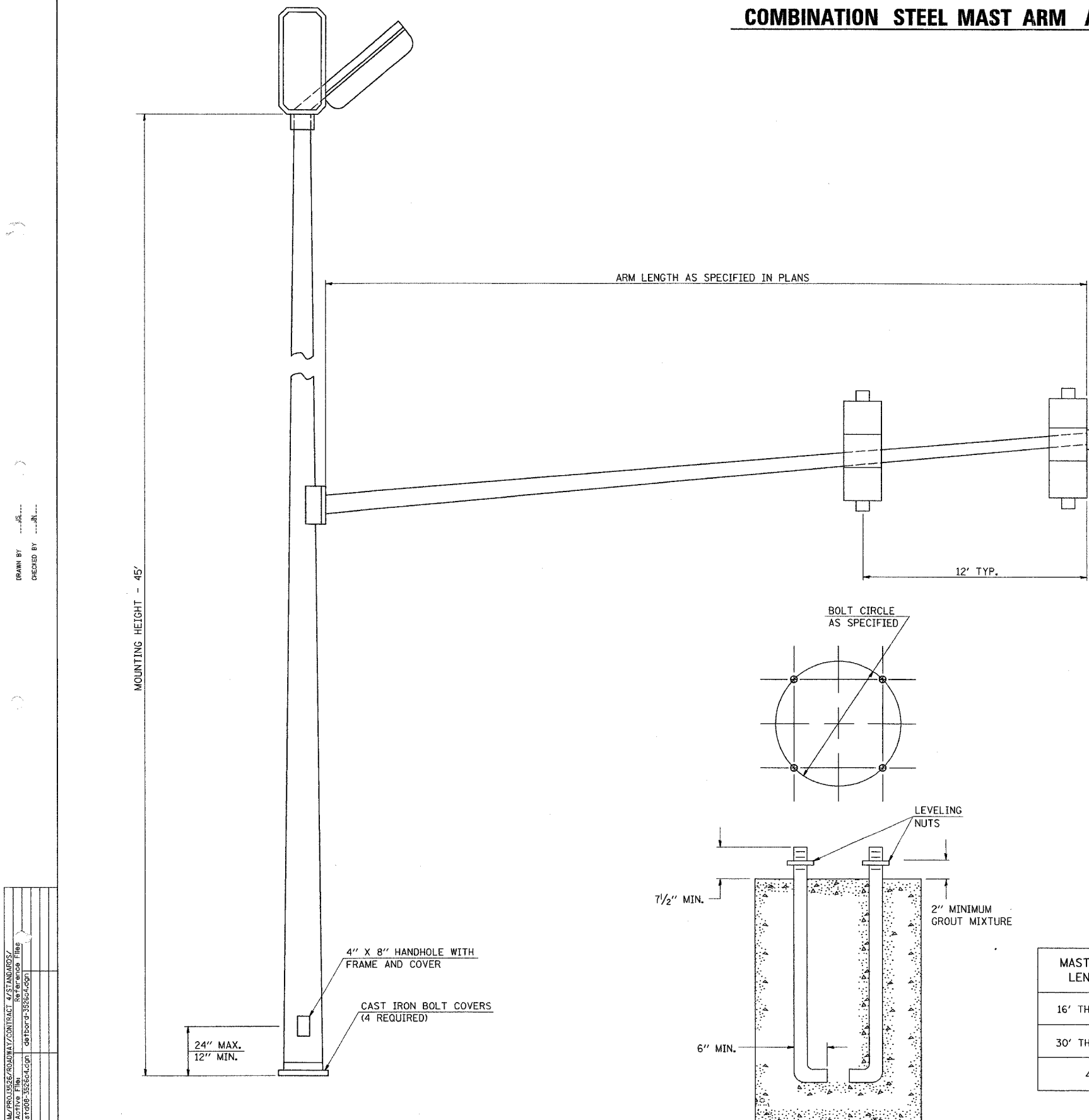


F.A.P. RTE.	SECTION	COUNTY	TOTAL SHEETS	SHEET NO.
332	31-1-2, 31B	SALINE	199	117
STA.		TO STA.		
FED. ROAD DIST. NO.	ILLINOIS	FED. AID PROJECT		

### COMBINATION STEEL MAST ARM ASSEMBLY AND POLE

#### GENERAL NOTES

1. THE COMBINATION MAST ARM ASSEMBLY AND POLE SHALL BE CONSTRUCTED WITH ONE PIECE MAST ARMS AND POLE OR OTHER EQUIVALENT SECTIONAL DESIGN.
2. THE CONTRACTOR SHALL SUBMIT DETAILED DRAWINGS SHOWING DESIGN MATERIALS, THICKNESS OF SECTIONS, WELD SIZES, AND ANCHOR BOLTS TO THE ENGINEER FOR APPROVAL PRIOR TO FABRICATION. THESE DRAWINGS SHALL BE AT LEAST 17 INCHES BY 22 INCHES IN SIZE AND OF ADEQUATE QUALITY FOR MICROFILMING.
3. THE TYPE OF SIGNAL HEAD MOUNTING BRACKET TO BE USED SHALL BE APPROVED BY THE ENGINEER.
4. THE SIGNAL HEAD (INCLUDING BACKPLATE WHEN USED) SHALL NOT BE LESS THAN 16'-0" OR MORE THAN 18'-0" ABOVE THE CROWN OF PAVEMENT.
5. THE MANUFACTURER WILL BE ALLOWED TO SLOT THE BASE PLATE IN WHICH OTHER BOLT CIRCLES MAY FIT, PROVIDING THAT THESE SLOTS DO NOT OFFSET THE INTEGRITY OF THE POLE.
6. COMBINATION MAST ARM ASSEMBLIES AND POLES SHALL NOT BE INSTALLED WITHOUT THE LUMINAIRE.
7. THE ANCHOR BOLTS SHALL CONFORM TO THE REQUIREMENTS OF ARTICLE 706.09 OF THE STANDARD SPECIFICATIONS FOR ROAD AND BRIDGE CONSTRUCTION.



MAST ARM LENGTH	BOLT CIRCLE	ANCHOR BOLT SIZE
16' THRU 28'	15"	1 1/2" X 60"
30' THRU 42'	18"	1 1/2" X 60"
44'	18"	1 3/4" X 90"

REVISIONS	
DRAWN	2-13-90
REVISED	8-16-94
STD 9-70	