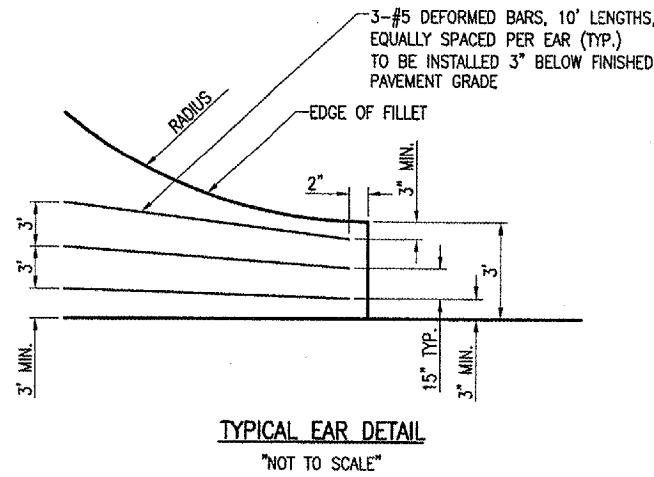
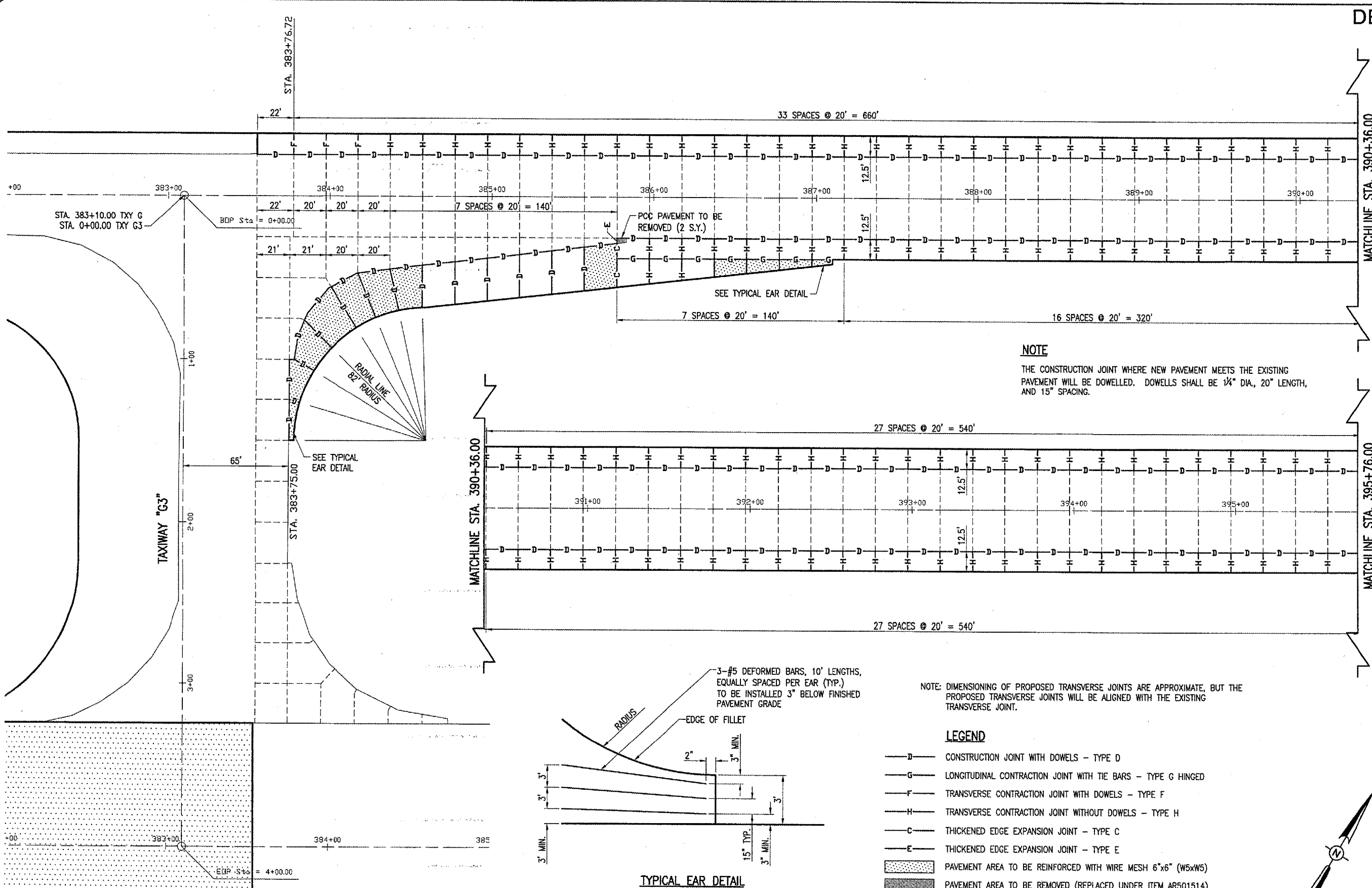


JUN 10, 2005 9:40 AM CCC
 I:\AIRPORTS\DECATUR\802-CATX\AIRPORT\PROJECT-SHEETS\CONTRACT-1\1R-16\JUNT.DWG - STA. 383+54.66 TO 395+77.30



NOTE
 THE CONSTRUCTION JOINT WHERE NEW PAVEMENT MEETS THE EXISTING PAVEMENT WILL BE DOWELLED. DOWELS SHALL BE 1/4" DIA., 20" LENGTH, AND 15" SPACING.

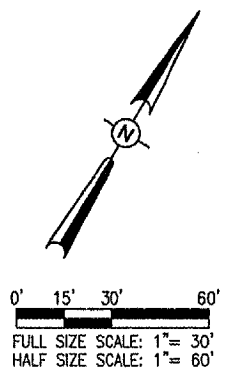
NOTE: DIMENSIONING OF PROPOSED TRANSVERSE JOINTS ARE APPROXIMATE, BUT THE PROPOSED TRANSVERSE JOINTS WILL BE ALIGNED WITH THE EXISTING TRANSVERSE JOINT.

LEGEND

- D — CONSTRUCTION JOINT WITH DOWELS - TYPE D
- G — LONGITUDINAL CONTRACTION JOINT WITH TIE BARS - TYPE G HINGED
- F — TRANSVERSE CONTRACTION JOINT WITH DOWELS - TYPE F
- H — TRANSVERSE CONTRACTION JOINT WITHOUT DOWELS - TYPE H
- C — THICKENED EDGE EXPANSION JOINT - TYPE C
- E — THICKENED EDGE EXPANSION JOINT - TYPE E
- ▨ PAVEMENT AREA TO BE REINFORCED WITH WIRE MESH 6"x6" (W5xW5)
- ▩ PAVEMENT AREA TO BE REMOVED (REPLACED UNDER ITEM AR501514)

QUANTITIES

ITEM No.	DESCRIPTION	UNIT	QUANTITY	AS BUILT QUANTITY
AR501900	REMOVE PCC PAVEMENT	S.Y.	295	



DE165

DATE	REVISION	BY									
HANSON Engineers, Architects, Scientists 1525 South Sixth Street Springfield, Illinois 62703-2886 Offices Nationwide											
REL Project No. 802-04TXD Plan No. 161JUNT.DWG Scale 1"=30' Date 10/28/04					ILL. PROJ.: DEC-3414 A.I.P. PROJ.: 3-17-0033-28						
LAYOUT		WJM		10/28/04		DRAWN		CCC		10/28/04	
REVIEWED		WJM		06/07/05		TAXIWAY G WIDENING PHASE II		PROPOSED JOINTING PLAN		STA. 383+54.66 TO 395+77.30	
31											
31 of 110 sheets											