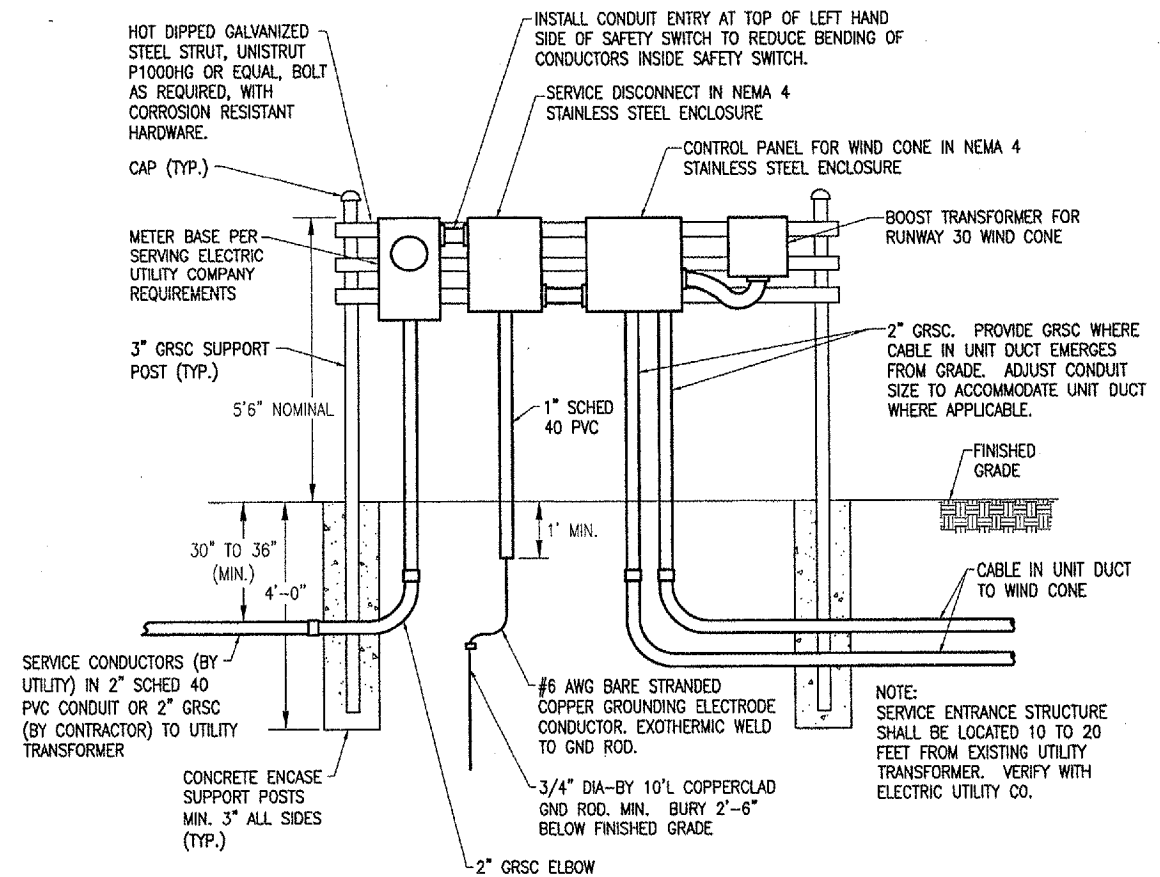


ELECTRICAL ONE LINE DIAGRAM FOR  
RUNWAY 24 & RUNWAY 30 WIND CONES



SERVICE ENTRANCE ELEVATION

NOT TO SCALE

ELECTRICAL NOTES

- ALL ELECTRICAL EQUIPMENT SHALL BE INSTALLED IN CONFORMANCE WITH NFPA70 (MOST CURRENT ISSUE IN FORCE), THE RESPECTIVE EQUIPMENT MANUFACTURER'S DIRECTIONS AND ALL OTHER APPLICABLE LOCAL CODES, LAWS, ORDINANCES, AND REQUIREMENTS IN FORCE. ANY INSTALLATIONS WHICH VOID THE U.L. LISTING, ETL LISTING, (OR OTHER THIRD PARTY LISTING) AND/OR THE MANUFACTURER'S WARRANTY OF A DEVICE SHALL NOT BE PERMITTED.
- CONTRACTOR SHALL COORDINATE ANY POWER OUTAGES TO EXISTING EQUIPMENT WITH THE AIRPORT DIRECTOR, AND THE RESIDENT ENGINEER.
- CONTRACTOR SHALL COORDINATE ELECTRIC SERVICE WORK WITH THE SERVING ELECTRIC UTILITY (AMEREN IP, 2460 NORTH JASPER STREET, DECATUR, IL 62526, ATTN. MS. TAMMY HAUGERUD, H-15, PHONE: 217-412-6455) & THE AIRPORT DIRECTOR. NOTE THE NEW SERVICES FOR THE WINDCONES ARE TO BE OBTAINED FROM EXISTING UTILITY TRANSFORMERS THAT SERVE FAA FACILITIES AND EQUIPMENT. ARRANGE WITH THE AIRPORT DIRECTOR TO CONTACT THE RESPECTIVE FAA PERSONNEL AND NOTIFY THEM OF ANY SCHEDULED POWER OUTAGES.
- ALL EQUIPMENT NOT LABELED AS EXISTING IS NEW.
- PROVIDE NEMA 4 HUBS FOR ALL CONDUIT ENTRIES INTO NEMA 4 RATED ENCLOSURES.
- ALL CONDUCTORS/WIRING SHALL BE COPPER.
- ELECTRIC SERVICE & WIND CONE CONTROL WORK SHALL BE PAID FOR UNDER THE FOLLOWING:  
AR800580 "ELECTRICAL SERVICE FOR RWY 24 & RWY 30 WIND CONES" PER LUMP SUM
- WIND CONES SHALL BE PAID FOR UNDER AR107408.
- CABLE IN UNIT DUCT SHALL HAVE COLOR CODED INSULATION AS FOLLOWS:

120 VAC CIRCUITS

PHASE A	BLACK
PHASE B	RED OR BLACK WITH RED TAPE
NEUTRAL	WHITE
GROUND	GREEN

DATE	REVISION	BY

DECATUR, ILLINOIS  
A.I.P. PROJ.: 3-17-0033-28  
IL PROJ.: DEC-3414

REVISED	CAH	06/03/05
DRAWN	MV	04/25/05
LAYOUT	KNL	04/22/05

**HANSON**  
Engineers, Architects, Scientists  
1528 South Sixth Street  
Springfield, Illinois 62703-2886  
Office: Nationwide

TAXIWAY G WIDENING  
PHASE II  
ELECTRICAL ONE LINE  
DIAGRAM FOR RUNWAY 24  
& RUNWAY 30 WIND CONES

JUN 10, 2005 12:54 PM CCC  
E:\AIRPORTS\DECATUR\802-04TXYD\AIRPORT\ SHEETS\CONTRACT-1\E-601.DWG - Work-FLR