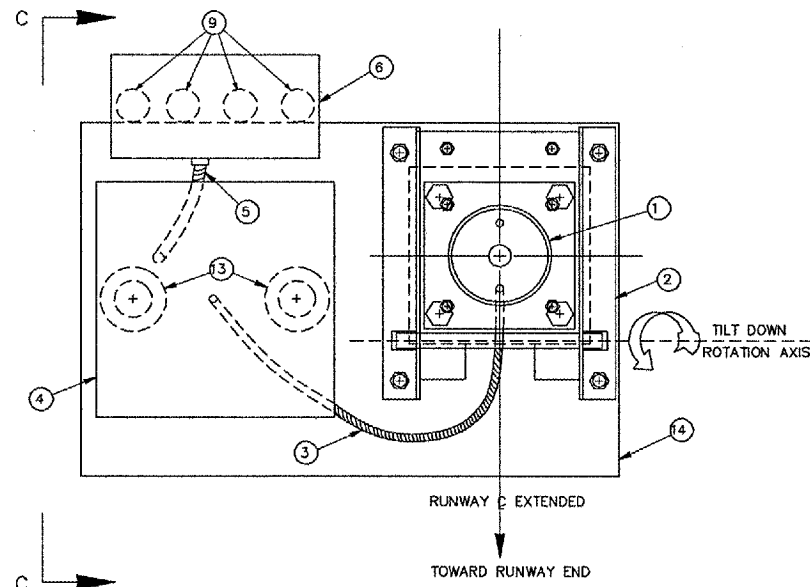
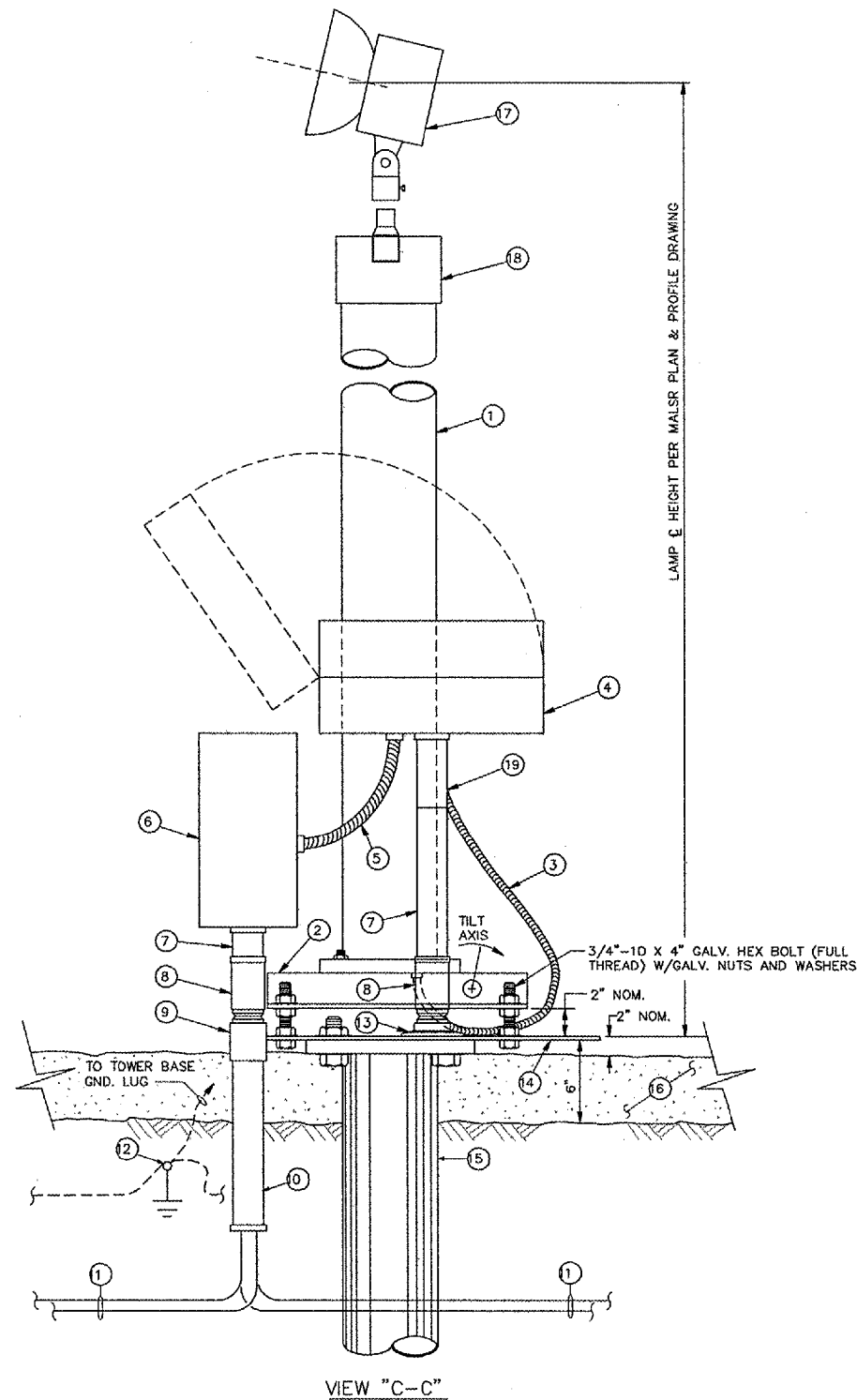


FOUNDATION ADAPTER PLATE - LAYOUT
 DETAIL "A"



LIR TOWER, JB-2 BOX, AND POWER SUPPLY MOUNTING
 DETAIL "B"



NUMBERED LEGEND

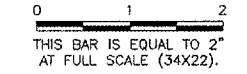
- 1 FRANGIBLE LIR TOWER.
- 2 TOWER BASE ASSEMBLY.
- 3 1/2" LIQUID-TIGHT FLEXIBLE CONDUIT FROM FLASHER CABINET (4) TO THE BOTTOM OF THE TOWER STAND PLATE.
- 4 INDIVIDUAL RAIL FLASHER CONTROL CABINET, WITH FACTORY HUBS FOR CONDUITS (7).
- 5 3/4" LIQUID-TIGHT FLEXIBLE CONDUIT.
- 6 JB-2 BOX.
- 7 2" EMT CONDUIT.
- 8 FRANGIBLE COUPLING.
- 9 2" GALVANIZED RIGID STEEL CONDUIT COUPLING WELDED TO FOUNDATION PLATE (4). SEE NOTE 4.
- 10 2" GALVANIZED RIGID STEEL CONDUIT WITH GROUNDING BUSHING.
- 11 INCOMING AND OUTGOING POWER AND CONTROL CABLES.
- 12 3/4" X 10' COPPERCLAD STEEL GROUNDING ELECTRODE (ROD). GROUNDING CONDUCTORS ARE WELDED TO THE ELECTRODE WITH EXOTHERMIC WELDS.
- 13 2" GALVANIZED FLOOR FLANGE BOLTED OR WELDED TO FOUNDATION PLATE. SEE NOTE 4.
- 14 FOUNDATION ADAPTER PLATE PER DETAIL "A". ATTACHED TO ANCHOR FOUNDATION WITH 1" BOLTS.
- 15 SCREW-IN-ANCHOR FOUNDATION, A.B. CHANCE CAT. NO. CT112-0262.
- 16 CRUSHED ROCK OF TOWER MAINTENANCE AREA PER DETAIL "C", SHEET 2.
- 17 FLASHER LAMP HEAD ASSEMBLY.
- 18 TUBE CAP ASSEMBLY.
- 19 2" EMT COMPRESSION T-FITTING WITH REDUCING BUSHING FOR 1/2" LIQUID-TIGHT FLEXIBLE CONDUIT FITTING.

NOTES: CONSTRUCT THE RAIL THAT:

1. CABLING AND ELECTRICAL CONNECTIONS ARE PER SHEET 26.
2. NO RIGID CONDUIT IS SUBSTITUTED FOR EMT.
3. THE TOWER IS INSTALLED TO PIVOT DOWN TOWARD OR AWAY FROM THE THRESHOLD AS SHOWN ON THE MALS.R PLAN AND PROFILE SHEET.
4. WELDS AND ALL OTHER PLACES WHERE THE ZINC COATING HAS BEEN DAMAGED, ARE SANDED TO BRIGHT METAL AND COATED WITH ZINC RICH COMPOUND (ZRC).
5. A HOLE IS CUT IN THE BOTTOM OF CABINET (4), TO ACCOMMODATE CONDUIT (5). THE CABINET COMES WITH ONE HOLE FOR CONDUIT (3).
6. WHERE SPECIFIC MANUFACTURERS OF EQUIPMENT ARE GIVEN, THE CONTRACTOR MAY SUBMIT ALTERNATE EQUIPMENT EQUAL TO THAT PROPOSED FOR CONSIDERATION BY THE ENGINEER.

REVISIONS

NUMBER	BY	DATE



**FREEPORT - ALBERTUS AIRPORT
 FREEPORT, ILLINOIS**

**ILLINOIS PROJECT: FEP-3132 / A.I.P. PROJECT: 3-17-0045-B16
 RAIL MG-20 LIR FLASHER TOWER**

CMT
 CRAWFORD, MURPHY & TILLY, INC.
 CONSULTING ENGINEERS

© Copyright CMT, Inc.

DESIGN BY:	
DRAWN BY:	
CHECKED BY:	
APPROVED BY:	
DATE:	06/17/05
JOB No:	02294-08