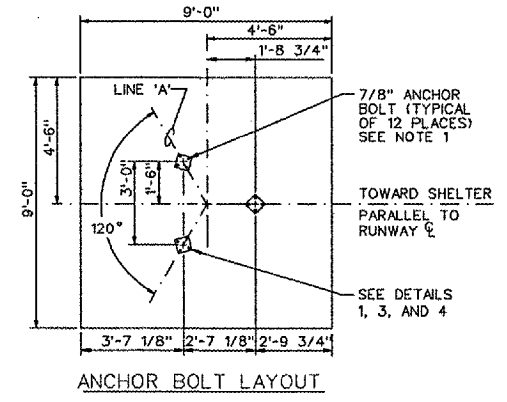


3 DETAIL
SCALE: NONE

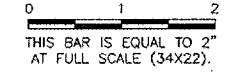
NOTES:

1. TOLERANCES FOR GLIDE SLOPE ANTENNA MAST ANCHOR BOLTS ARE ±1/16" OF DIMENSIONS SHOWN.
2. REBARS ARE LOCATED SO THAT THEY DO NOT INTERFERE WITH ANCHOR BOLT LOCATIONS REQUIRED PER NOTE 1.
3. ANCHOR BOLTS ARE HOT DIP GALVANIZED STEEL PER ASTM A153 AND ASTM A354. NUTS ARE HOT DIP GALVANIZED STEEL PER ASTM A153 AND ASTM A325.
4. SURFACE IS PER SHEET 27.
5. ANCHOR BOLT TEMPLATE WAS CHECKED AGAINST TOWER BASE BEFORE THE CONCRETE POUR WAS MADE.
6. TOWER IS GROUTED UNDER ALL ANCHOR PLATES AFTER FINAL LEVELING ADJUSTMENT.
7. TOWER LEG SECTIONS ARE BRAZED OR WELDED TOGETHER AT THE BOLTED CONNECTIONS TO PROVIDE ELECTRICAL CONTINUITY. WELD LENGTH IS 1" MINIMUM.
8. TOWER LIGHTNING PROTECTION IS PER THE REQUIREMENTS OF NFPA 78, INCLUDING A THOMPSON #572 24" COPPER AIR TERMINAL AND THOMPSON #32 DOWN CONDUCTORS ON THE INSIDE OF TWO TOWER LEGS (BONDED TO THE TOWER WITH THOMPSON CLAMPS AT 36" ON CENTER MAXIMUM).
9. ALL CONCRETE SHALL MEET THE REQUIREMENT OF ITEM 610.
10. FOUNDATION TOP SHALL BE LEVEL ±1/8" AND IS BROOM FINISHED.
11. OVERALL HEIGHT OF ANTENNA MAST OF 45' IS ACHIEVED BY CUTTING AND CAPPING THE UPPERMOST SECTION OF MAST. THE MAST IS ASSEMBLED WITH ALTERNATING 10' BANDS OF ORANGE AND WHITE WITH THE TOP 5' BEING ORANGE.
12. THE OBSTRUCTION LIGHT SHALL BE OPERATIONAL BEFORE DUSK OF THE SAME DAY THAT THE MAST IS ERECTED. OTHERWISE A NOTAM IS ISSUED. STRICT ADHERENCE TO THIS NOTE IS REQUIRED.
13. WHERE SPECIFIC MANUFACTURERS OF EQUIPMENT ARE GIVEN, THE CONTRACTOR MAY SUBMIT ALTERNATE EQUIPMENT EQUAL TO THAT PROPOSED FOR CONSIDERATION BY THE ENGINEER.



REVISIONS

NUMBER	BY	DATE



**FREEPORT - ALBERTUS AIRPORT
 FREEPORT, ILLINOIS**
 ILLINOIS PROJECT: FEP-3132 / A.I.P. PROJECT: 3-17-0045-B16
**GLIDESLOPE ANTENNA TOWER
 SHEET 1**

CMT
 CRAWFORD, MURPHY & TILLY, INC.
 CONSULTING ENGINEERS

DESIGN BY:
 DRAWN BY:
 CHECKED BY:
 APPROVED BY:
 DATE: 06/17/05
 JOB No: 02294-08
 SHEET 30 OF 34 SHEETS