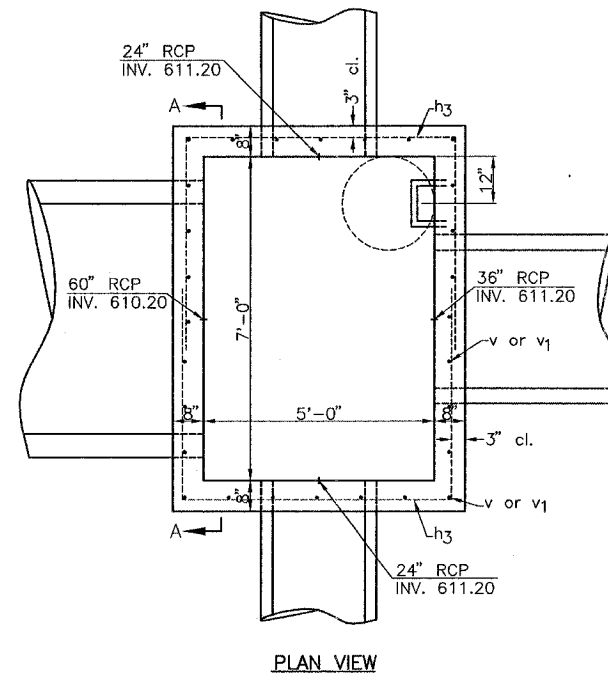
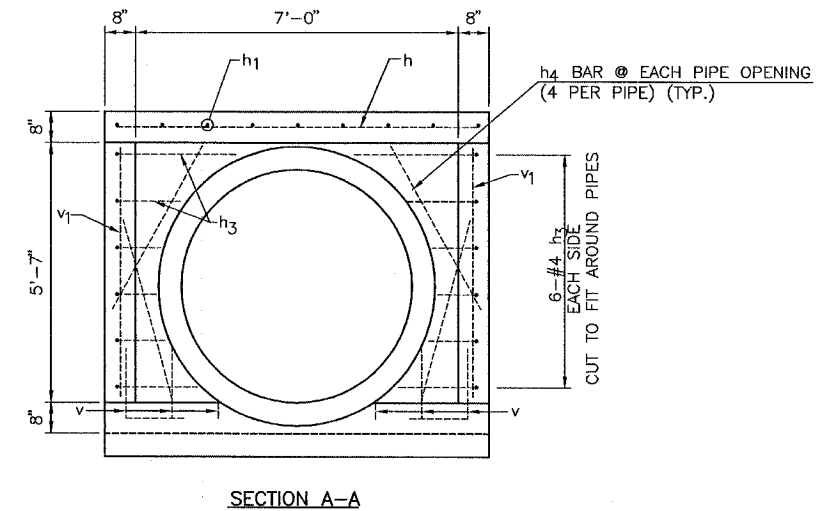
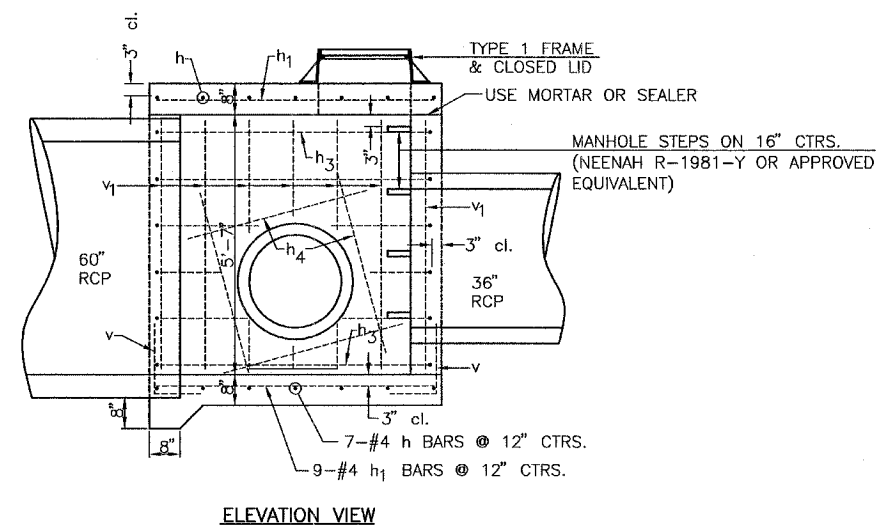
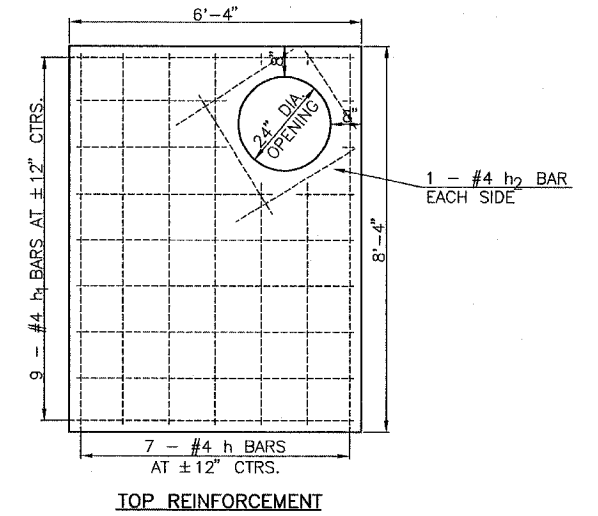


TYPICAL STORM SEWER TRENCH DETAILS



GENERAL NOTE
CUT REINFORCEMENT IN FIELD TO FIT AROUND PIPE OPENINGS AS REQUIRED.

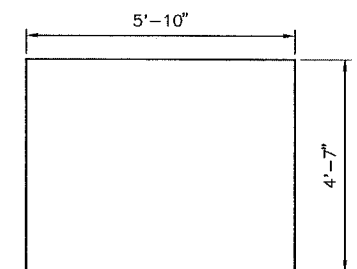
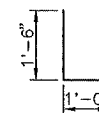


NOTES:

- MANHOLE TO BE CONSTRUCTED USING IDOT CLASS SI CONCRETE CONFORMING TO THE ITEM 610 SPECIFICATION AND SPECIAL PROVISIONS.
- A SMOOTH CONCRETE FILLET SHALL BE PROVIDED IN THE BOTTOM OF THE MANHOLE TO DIRECT FLOW FROM THE INFLUENT PIPES TO THE EFFLUENT PIPE.
- ALL CONCRETE, REINFORCEMENT BARS, MANHOLE STEPS AND THE TYPE 1 FRAME & CLOSED LID REQUIRED TO CONSTRUCT THE MANHOLE AS SHOWN IN THESE DETAILS SHALL BE INCLUDED IN THE UNIT PRICE BID PER EACH FOR MANHOLE-SPECIAL.

BAR LIST (FOR INFORMATION ONLY)

BAR	NO.	SIZE	LENGTH	SHAPE
h	14	#4	8'-0"	—
h ₁	18	#4	6'-0"	—
h ₂	4	#4	3'-0"	—
h ₃	12	#4	15'-0"	┌┐
h ₄	16	#4	4'-0"	—
v	28	#4	2'-6"	L
v ₁	28	#4	5'-4"	—
REINFORCEMENT BARS			POUND	465



DETAILS OF MANHOLE - SPECIAL

JACKSONVILLE MUNICIPAL AIRPORT
JACKSONVILLE, ILLINOIS

STORM SEWER SPECIAL DETAILS

HUTCHISON ENGINEERING, INC.
JACKSONVILLE, ILLINOIS

DRAWN BY: T.J.D. ILL. PROJ. NO. IJX-3435
DATE: JUNE, 2005 AIP PROJ. NO. 3-17-0054-B10