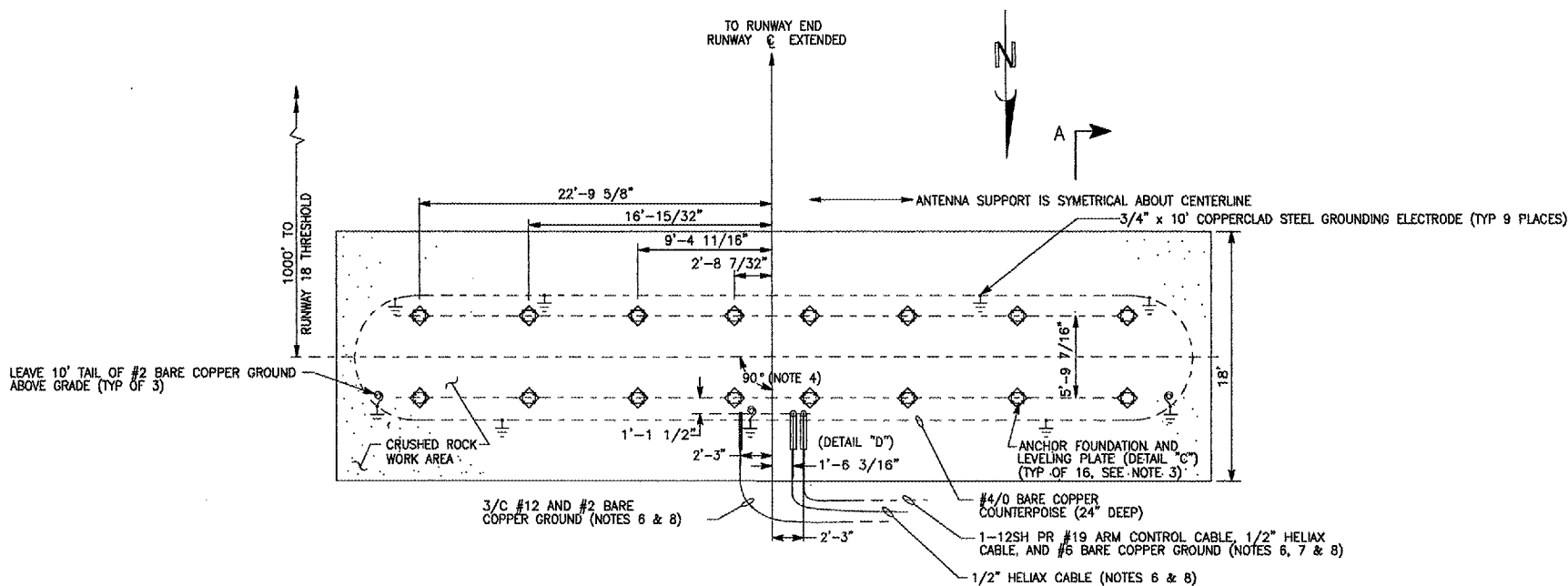


NOTES

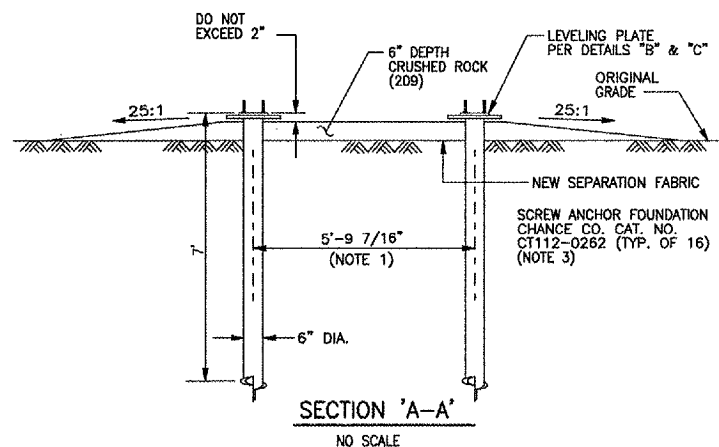
1. LOCATE SCREW ANCHOR FOUNDATIONS WITHIN ± 2" OF DIMENSIONS SHOWN. WELD LEVELING PLATE TO EACH FOUNDATION TOP AFTER LOCATING PLATE CENTER WITHIN ± 1/8" OF DIMENSIONS SHOWN.
2. ALL DIMENSIONS FOR STEEL FABRICATION ARE ± 1/16". STUDS INSTALLED BY 'STUD WELDING' PROCESS ARE AN ALTERNATIVE TO BOLTS AS SHOWN. LEVELING PLATES ARE GALVANIZED AFTER FABRICATION. FIELD WELDS SHALL BE TOUCHED UP WITH ZINC-RICH PRIMER.
3. ALL SCREW ANCHOR FOUNDATION TOPS SHALL BE INSTALLED TO THE SAME ELEVATION WITHIN 1/8" MAXIMUM TOTAL VARIATION. ANCHORS SHALL NOT BE BACKED OUT TO ACHIEVE THIS TOLERANCE.
4. ALIGN MAJOR AXIS OF ANTENNA ARRAY PERPENDICULAR TO RUNWAY CENTERLINE WITHIN +/-.05". ARRAY CENTER MUST BE WITHIN +/-.3" OF RUNWAY CENTERLINE.
5. AREA AROUND CONDUITS TO BE BACK FILLED LOOSELY TO ALLOW FOR ALIGNMENT OF CONDUIT WITH ANTENNA DISTRIBUTION UNIT
6. POWER, CONTROL, AND HELIAX CABLES ORIGINATE FROM LOCALIZER EQUIPMENT SHELTER. SEE SHEETS 7, 12, 13, 14 AND 15 FOR SITE LAYOUT. SEE SHEETS 12-15, (4 SHEETS) FOR EQUIPMENT SHELTER DETAILS.
7. LEAVE 6' TAILS OF BOTH POWER AND CONTROL CABLES AT THE ANTENNA ARRAY END.
8. LEAVE 3' TAIL OF HELIAX CABLES AT ANTENNA ARRAY END.
9. WHERE SPECIFIC MANUFACTURERS OF EQUIPMENT ARE GIVEN, THE CONTRACTOR MAY SUBMIT ALTERNATE EQUIPMENT EQUAL TO THAT PROPOSED FOR CONSIDERATION BY THE ENGINEER.



LOCALIZER ANCHOR FOUNDATION LAYOUT

PLAN

NO SCALE
 ALL CABLE SHOWN SHALL BE CONSIDERED INCIDENTAL TO THE LOCALIZER.



SECTION 'A-A'

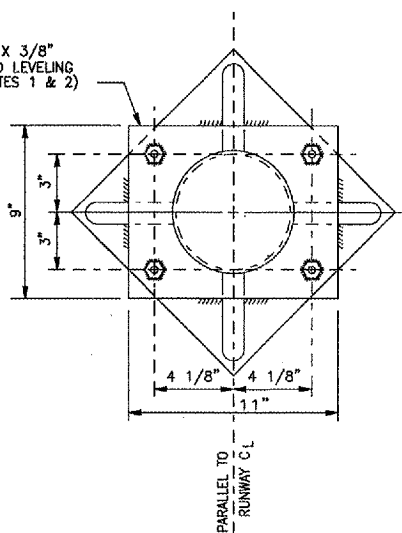
NO SCALE

SITE LAYOUT

LOCALIZER ANTENNA ARRAY COORDINATES:

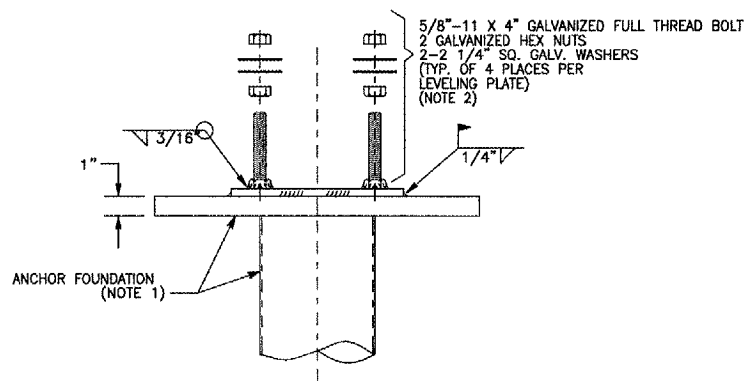
LATITUDE: 41°32'20.60"
 LONGITUDE: 87°31'39.21"
 ELEVATION: 614.00'
 (FINISH GRADE AT LOCALIZER SITE)
 NAD 83 COORDINATES

FABRICATE
 11" X 9" X 3/8"
 GALVANIZED LEVELING
 PLATE (NOTES 1 & 2)



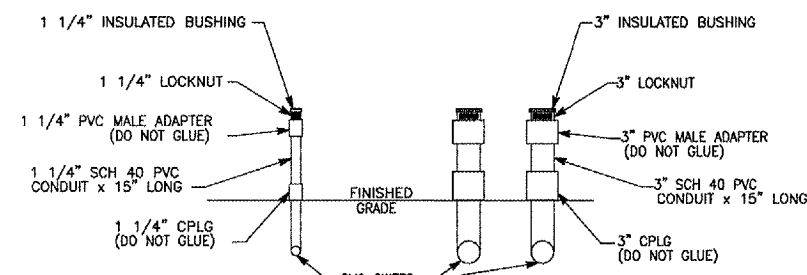
DETAIL "C"
LEVELING PLATE

(TYP. OF 16)
 NO SCALE



DETAIL "B"
LEVELING BOLT

NO SCALE



DETAIL "D"
DISTRIBUTION UNIT CONDUIT DETAILS

NO SCALE

LANSING MUNICIPAL AIRPORT
 LANSING, ILLINOIS

INSTALL RUNWAY 36 LOCALIZER
 LOCALIZER ANTENNA ARRAY
 FOUNDATION DETAIL

© Copyright CMT, Inc.
CMT
 CRAWFORD, MURPHY & TILLY, INC.
 CONSULTING ENGINEERS
 License No. 184-00013

Lansing Municipal
airport

DESIGN BY:	AB
DRAWN BY:	JRO
CHECKED BY:	AB
APPROVED BY:	
DATE:	06/22/05
JOB No:	04297-03
IL PROJECT:	IGQ-3482
A.I.P. PROJECT:	3-17-0121-B23
SHEET	9 OF 18 SHEETS