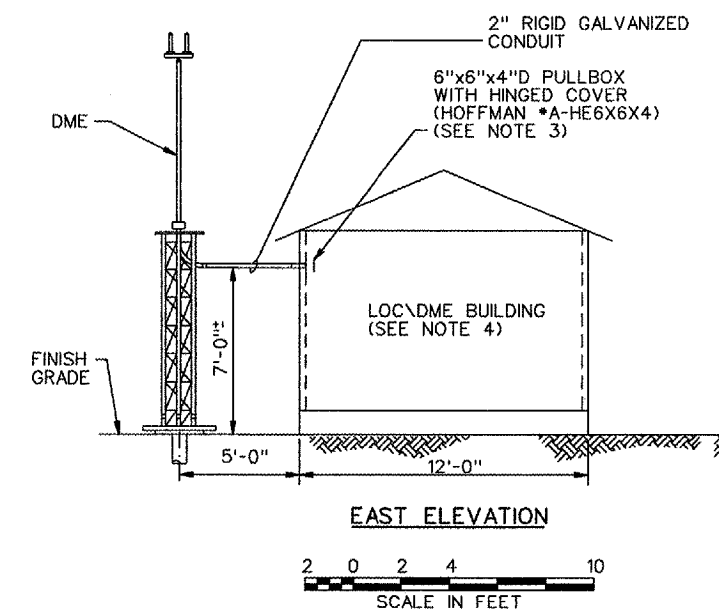
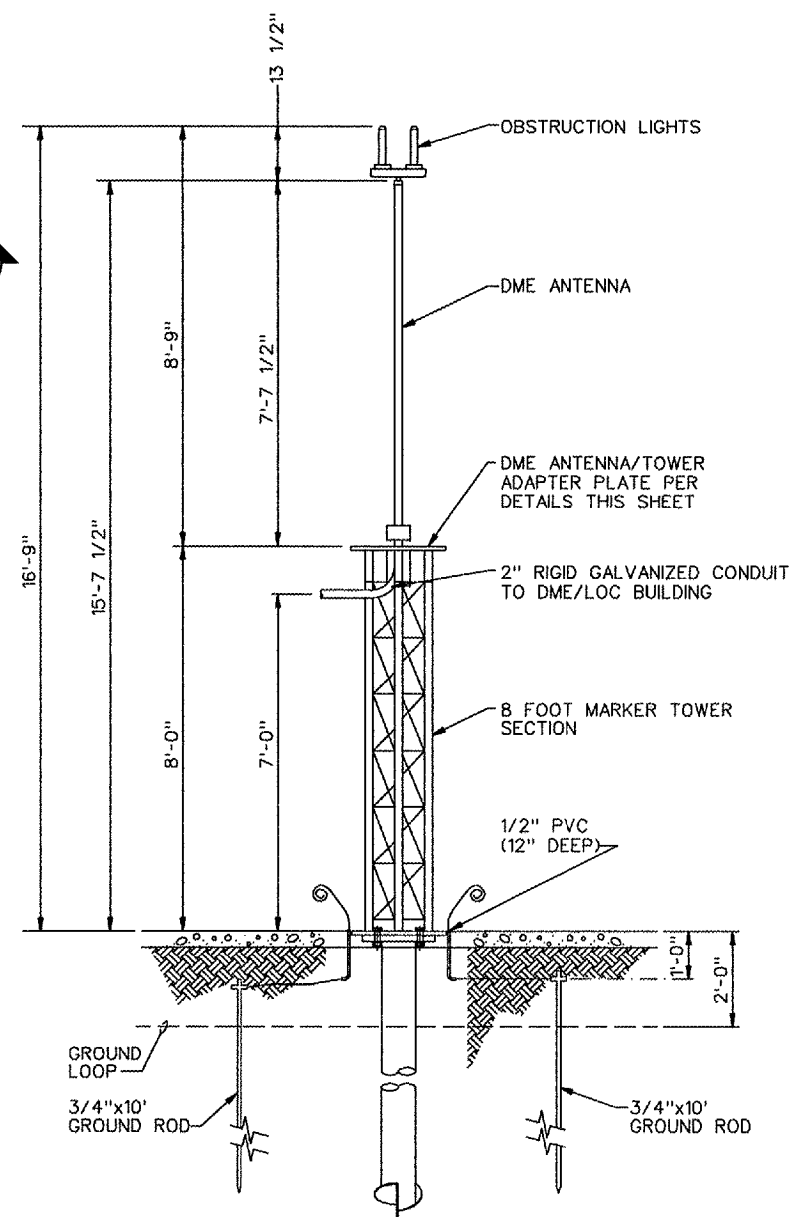
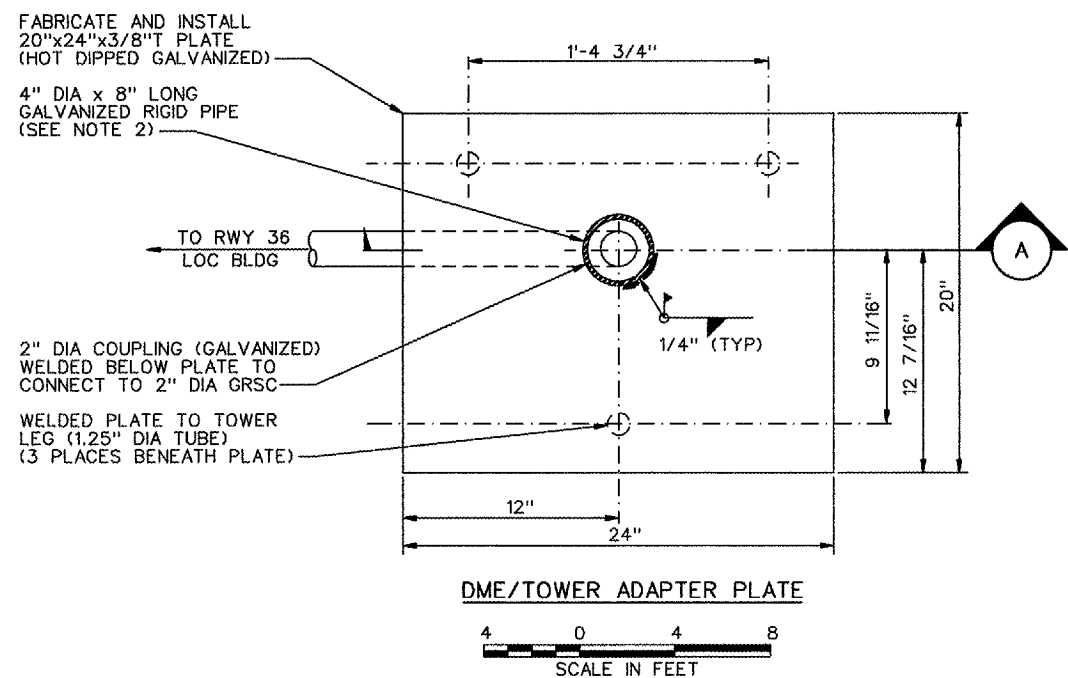
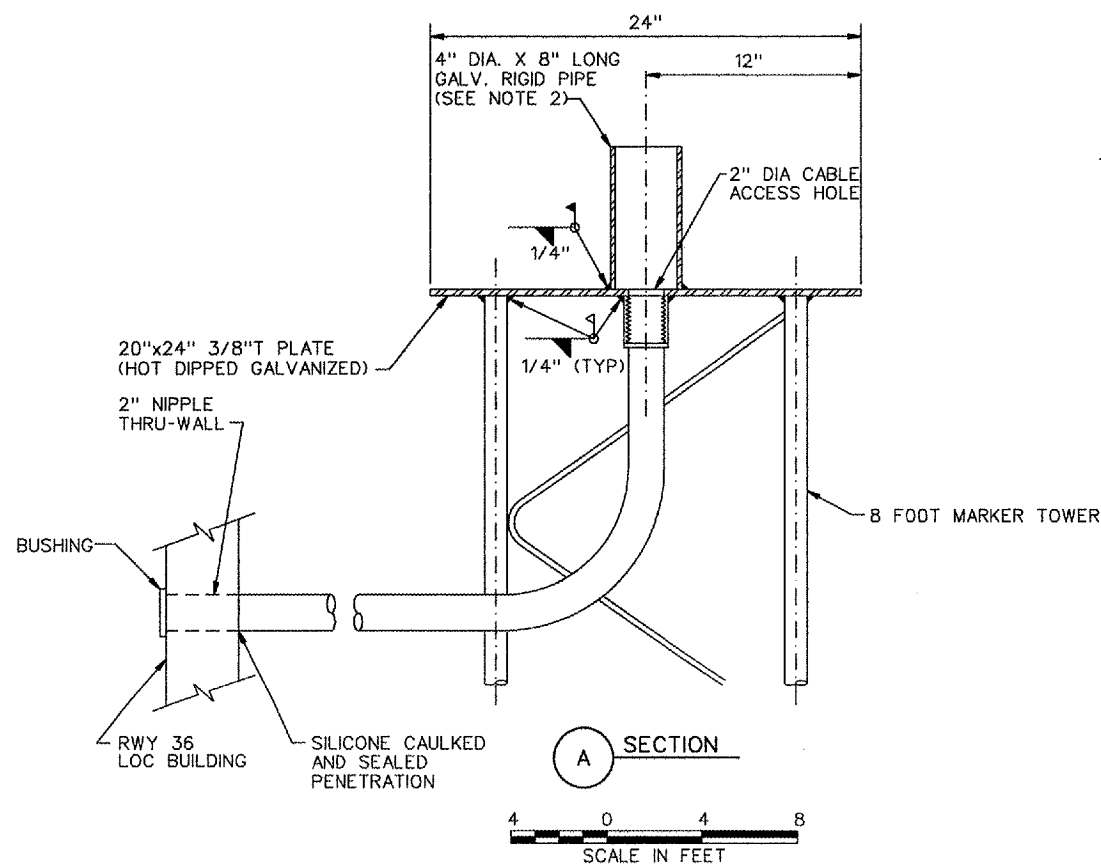


REVISIONS		
NUMBER	BY	DATE

0 1 2
 THIS BAR IS EQUAL TO 2"
 AT FULL SCALE (34X22).



DME COORDINATES
 LATITUDE: 41°32'20.006" N (NAD 83)
 LONGITUDE: 87°31'43.107" W (NAD 83)
 ELEVATION: 630.00 MSL (TOP OF ANTENNA)



NOTES:

- ALL DIMENSIONS FOR STEEL FABRICATION ARE 1/16". PLATE SHALL BE GALVANIZED AFTER FABRICATION. FIELD WELDS SHALL BE TOUCHED UP WITH ZINC RICH COMPOUND.
- ACCESS 2" DIA. ACCESS HOLE TO ACCEPT CONNECTION TO 2" DIA. GALVANIZED COUPLING/CONDUIT.
- HOLE WITH RUBBER GROMMET ON EAST SIDE OF PULLBOX TO ACCEPT 3/C SJO CORD. INSTALL PULLBOX IMMEDIATELY EAST OF NIPPLE THRU-WALL.
- SEE SHEET 7 FOR EQUIPMENT LAYOUT IN PLAN VIEW.
- WHERE SPECIFIC MANUFACTURERS OF EQUIPMENT ARE GIVEN, THE CONTRACTOR MAY SUBMIT ALTERNATE EQUIPMENT EQUAL TO THAT PROPOSED FOR CONSIDERATION BY THE ENGINEER.

© Copyright CMT, Inc.

CMT
 CRAWFORD, MURPHY & TILLY, INC.
 CONSULTING ENGINEERS
 License No. 184-000613

Lansing Municipal
airport

DESIGN BY:	AB
DRAWN BY:	JRO
CHECKED BY:	AB
APPROVED BY:	
DATE:	06/22/05
JOB No:	04297-03
IL PROJECT:	IGQ-3482
A.I.P. PROJECT:	3-17-0121-B23