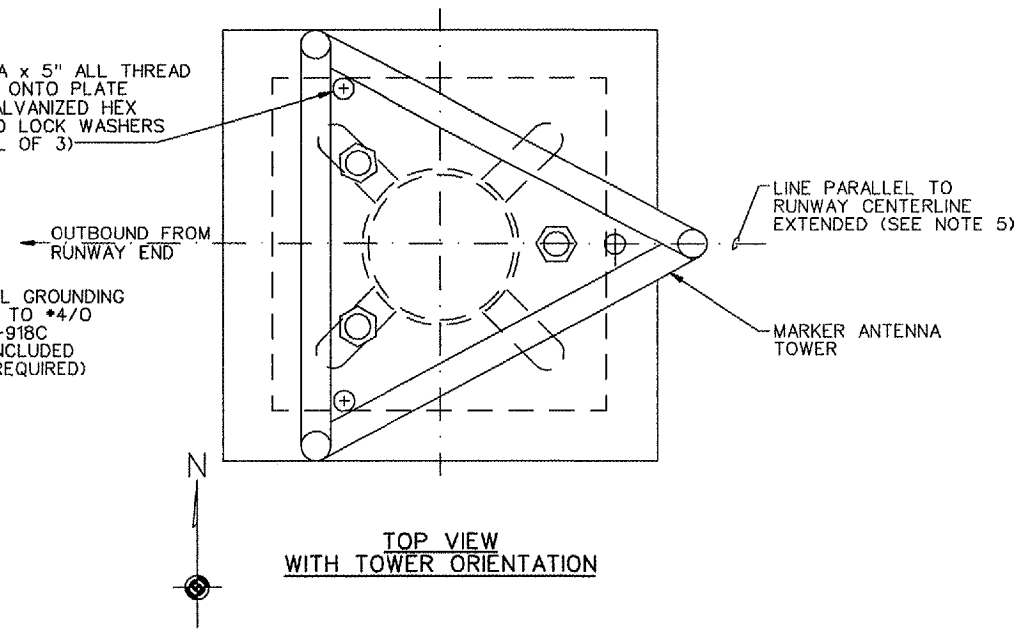
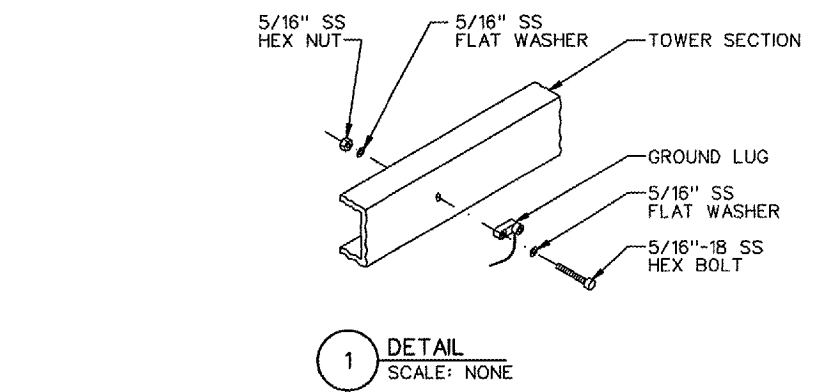
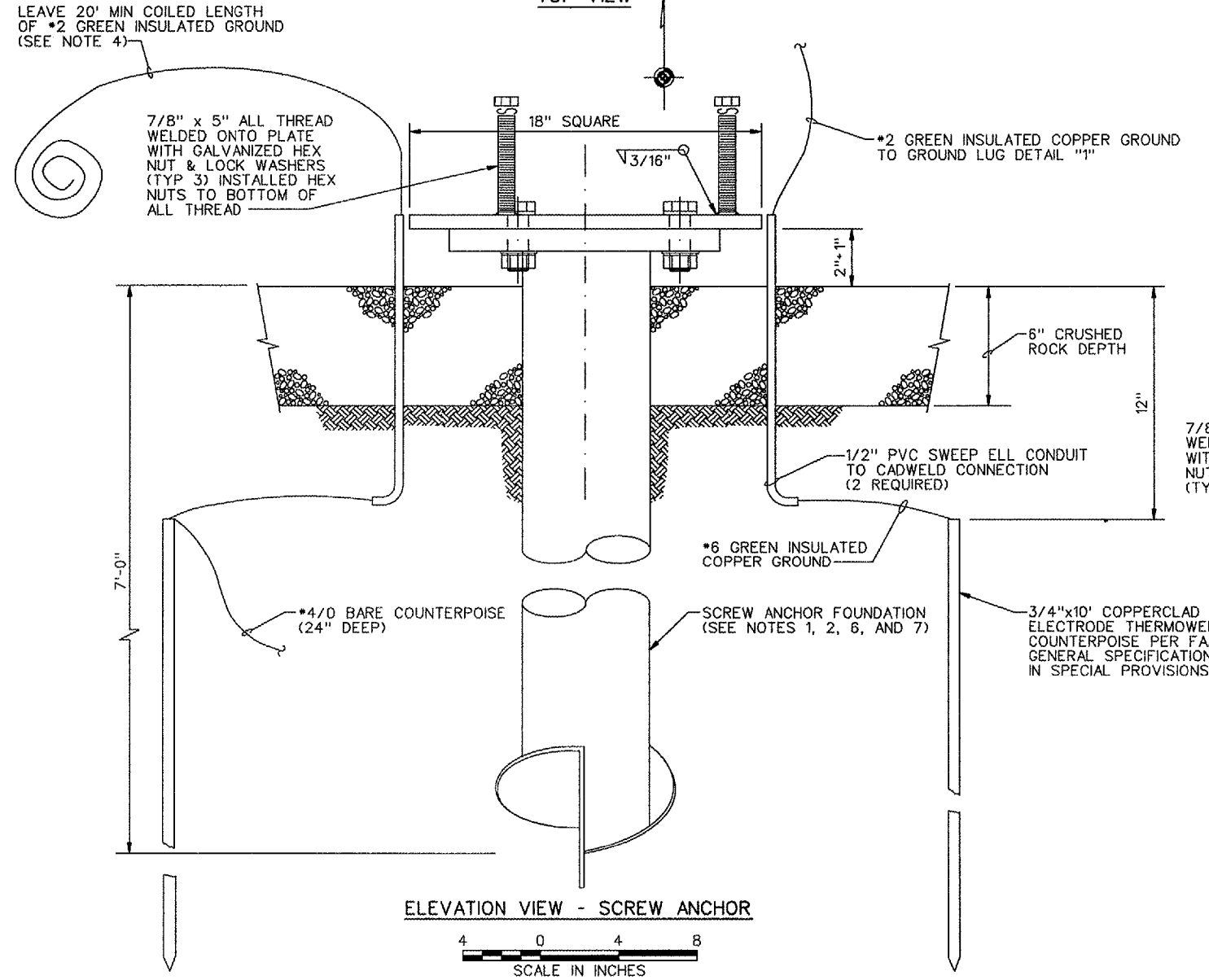
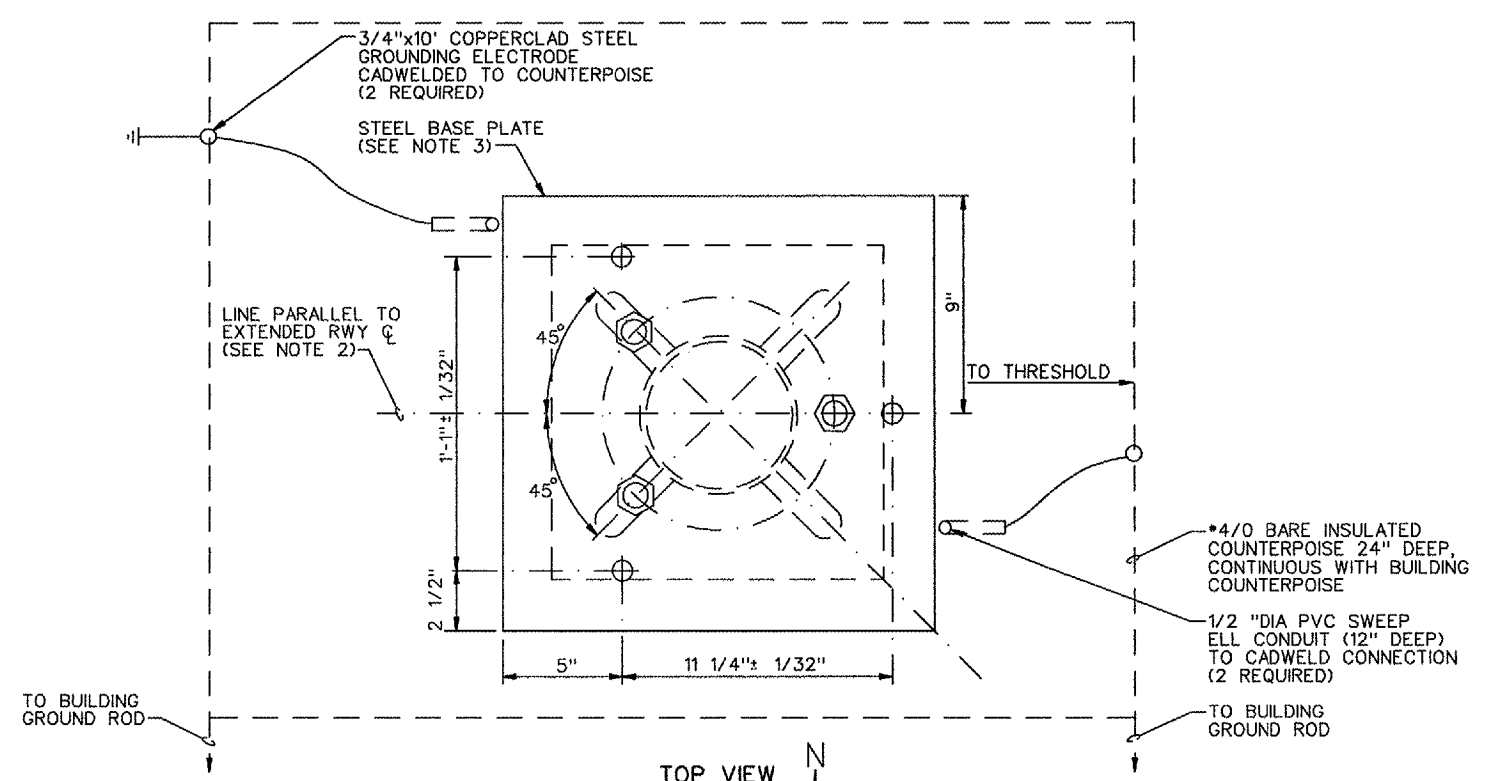
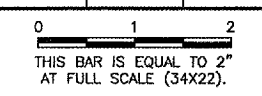


**NOTES:**

1. SCREW ANCHOR SHALL BE A.B. CHANCE COMPANY CAT NO CT112-0262. SEE FAA-GL-918D (INCLUDED IN SPECIAL PROVISIONS) GENERAL SPECIFICATIONS FOR INSTALLATION INSTRUCTIONS AND SOURCE INFORMATION.
2. ANCHOR SHALL BE ORIENTED WITH RUNWAY CENTERLINE AS SHOWN IN TOP VIEW.
3. BASE PLATE SHALL BE HOT-DIPPED 3/8" x 18" x 18", BOLTED TO SCREW ANCHOR TOP PLATE WITH (3) HOT-DIPPED GALV 7/8" x 3" STRUCTURAL BOLTS WITH NUTS AND LOCK WASHERS ON A 9 1/2" DIA BOLT CIRCLE, ORIENTED AS SHOWN. ONE BOLT HOLE IS TO BE FIELD DRILLED WHILE THE OTHER 2 MOUNTING BOLTS CAN USE THE EXISTING ANCHOR SLOTS.
4. THE #2 GREEN INSULATED GROUND WIRE SHALL BE 187\*1,000' AND 59,500 CM. NO STRAND OF THE CABLE SHALL BE SMALLER THAN #17 AWG.
5. ORIENTATION OF THE TOWER AS SHOWN.
6. WHEN DRIVING ANCHOR FOUNDATIONS, THE CONTRACTOR SHALL CHECK PLUMBNESS WITH A VERTICAL LEVEL ON SIDES OF THE SHAFT. MAINTAIN PLUMB WITHIN 1/8" PER FOOT OF THE SHAFT LENGTH. SEE SPECIFICATIONS FAA-GL-918C (INCLUDED IN SPECIAL PROVISIONS) FOR ADDITIONAL INSTRUCTIONS.
7. SCREW-IN-ANCHOR FOUNDATIONS SHALL BE INSTALLED WITHIN 2" OF DESIGN LOCATION.
8. WHERE SPECIFIC MANUFACTURERS OF EQUIPMENT ARE GIVEN, THE CONTRACTOR MAY SUBMIT ALTERNATE EQUIPMENT EQUAL TO THAT PROPOSED FOR CONSIDERATION BY THE ENGINEER.

REVISIONS		
NUMBER	BY	DATE



**LANSING MUNICIPAL AIRPORT  
 LANSING, ILLINOIS**  
**INSTALL RUNWAY 36 LOCALIZER**  
**DME MAST INSTALLATION DETAILS -  
 SHEET 2**

© Copyright CMT, Inc.  
**CMT**  
 CRAWFORD, MURPHY & TILLY, INC.  
 CONSULTING ENGINEERS  
 License No. 184-000613

DESIGN BY:	AB
DRAWN BY:	JRO
CHECKED BY:	AB
APPROVED BY:	
DATE:	06/22/05
JOB No:	04297-03
IL PROJECT:	IGQ-3482
A.I.P. PROJECT:	3-17-0121-B23