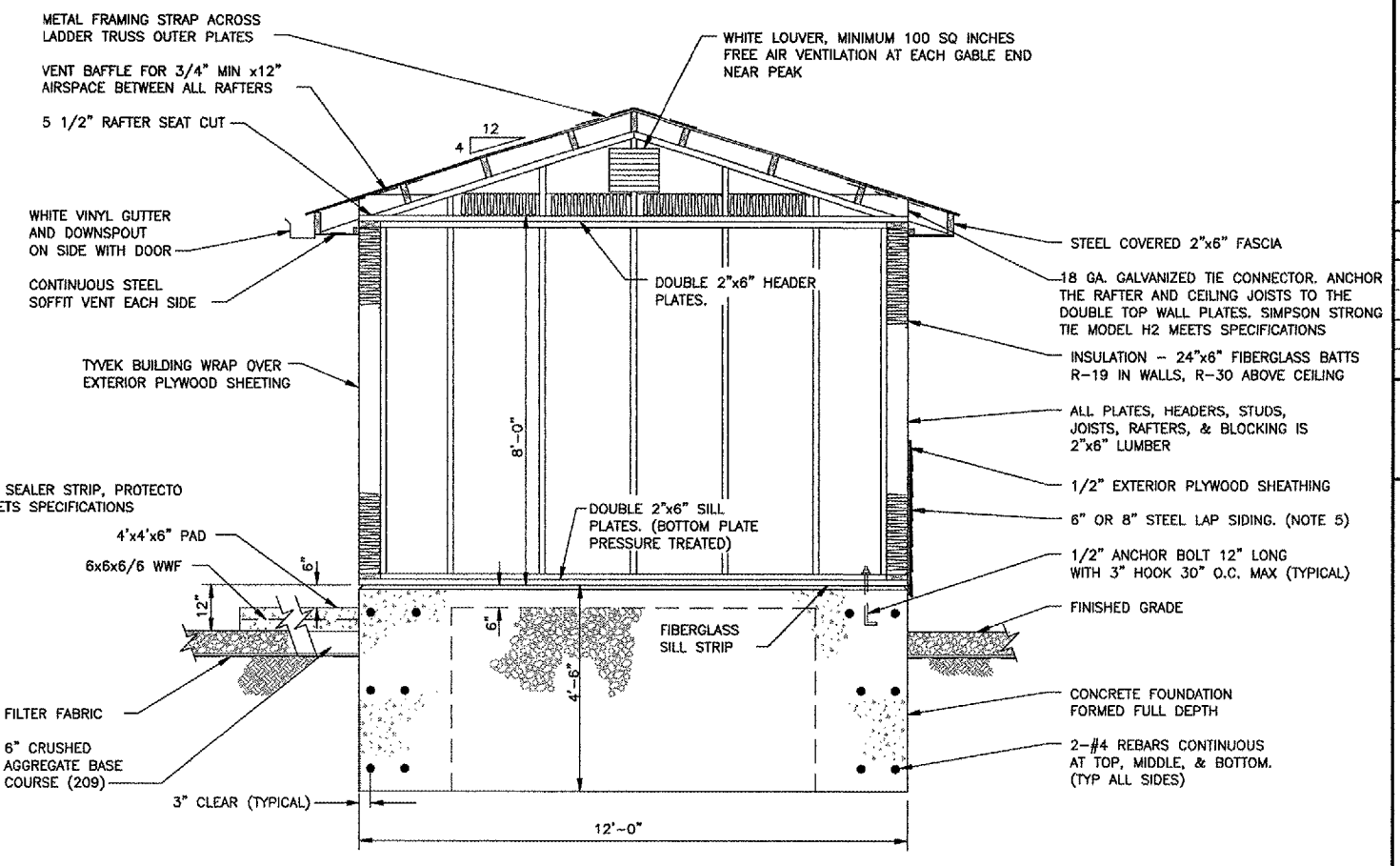
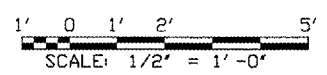
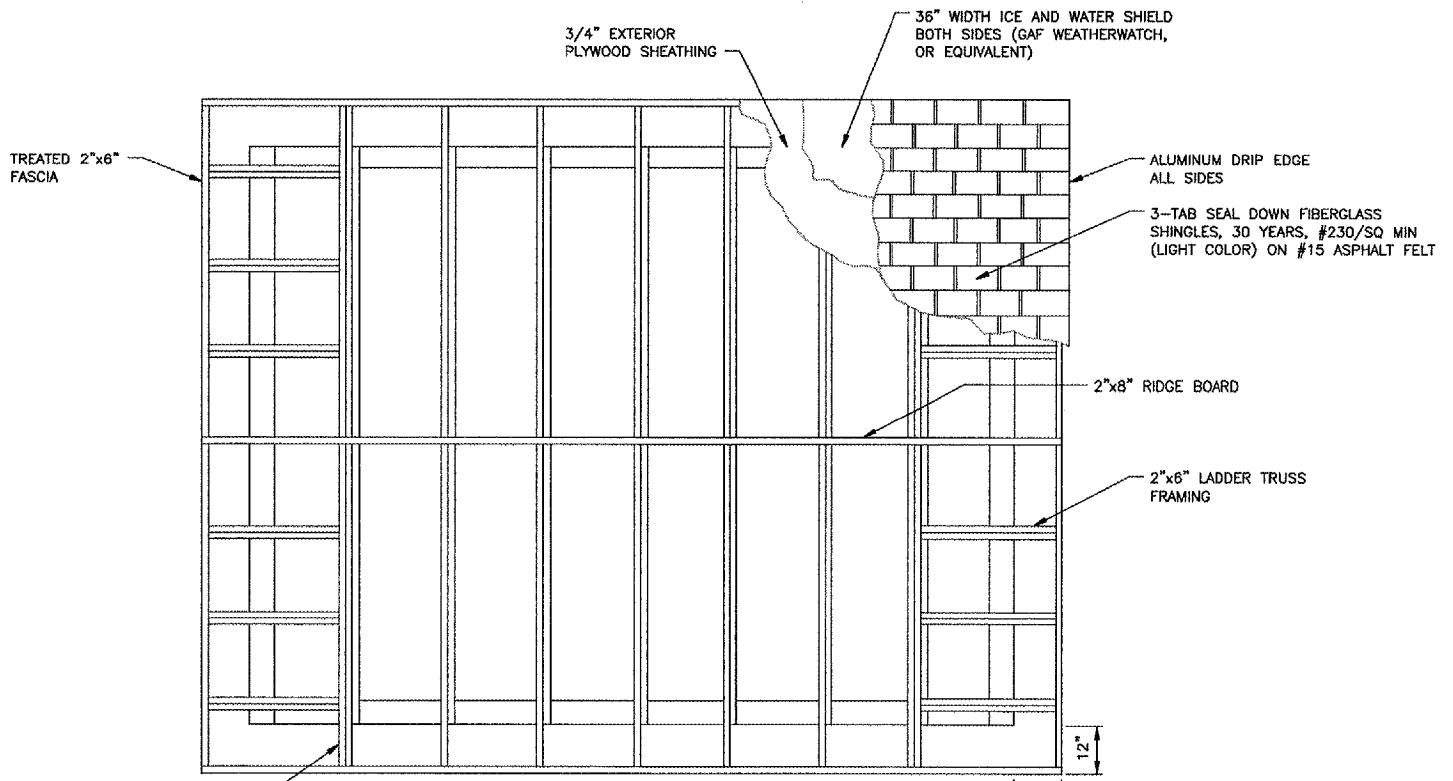
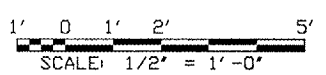


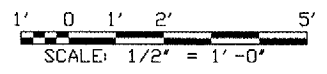
**FRONT ELEVATION**



**SIDE ELEVATION**



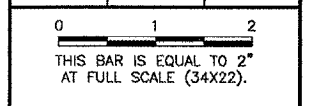
**ROOF PLAN**



- NOTES:**
1. THE FLOOR ELEVATION SHALL BE 12 INCHES ABOVE FINISHED GRADE.
  2. THE FOUNDATION SHALL BE FORMED SUCH THAT THE DOOR THRESHOLD IS FULLY SUPPORTED BY THE FOUNDATION.
  3. REFER TO MANUFACTURER'S INSTALLATION INSTRUCTIONS FOR FRAMING REQUIREMENTS FOR THRU-WALL HVAC UNIT. MAINTAIN 18" MIN. FROM BOTTOM OF UNIT TO FINISHED GRADE.
  4. THE RESILIENT FLOORING MATERIAL AND INSTALLATION SHALL BE IN ACCORDANCE WITH SPECIFICATION FAA-GL-918C, PARAGRAPH 13E.6 (INCLUDED IN SPECIAL PROVISIONS).
  5. THE WHITE STEEL SIDING MATERIAL AND INSTALLATION SHALL BE IN ACCORDANCE WITH SPECIFICATION FAA-GL-918C, PARAGRAPH 13E.8 (INCLUDED IN SPECIAL PROVISIONS).
  6. SEE SPECIFICATION FAA-GL-918C SECTION 13E FOR SHELTER CONSTRUCTION SPECIFICATIONS (INCLUDED IN SPECIAL PROVISIONS).
  7. WHERE SPECIFIC MANUFACTURERS OF EQUIPMENT ARE GIVEN, THE CONTRACTOR MAY SUBMIT ALTERNATE EQUIPMENT EQUAL TO THAT PROPOSED FOR CONSIDERATION BY THE ENGINEER.

**REVISIONS**

NUMBER	BY	DATE



**LANSING MUNICIPAL AIRPORT  
 LANSING, ILLINOIS**

**INSTALL RUNWAY 36 LOCALIZER**

**12'x16' EQUIPMENT SHELTER  
 LOCALIZER/DMEL**

© Copyright GMT, Inc.

**GMT**  
 CRAWFORD, MURPHY & TILLY, INC.  
 CONSULTING ENGINEERS  
 License No. 184-000613

Lansing Municipal  
**airport**

DESIGN BY:	AB
DRAWN BY:	JRO
CHECKED BY:	AB
APPROVED BY:	
DATE:	06/22/05
JOB No:	04297-03
IL PROJECT:	IGQ-3482
A.I.P. PROJECT:	3-17-0121-B23