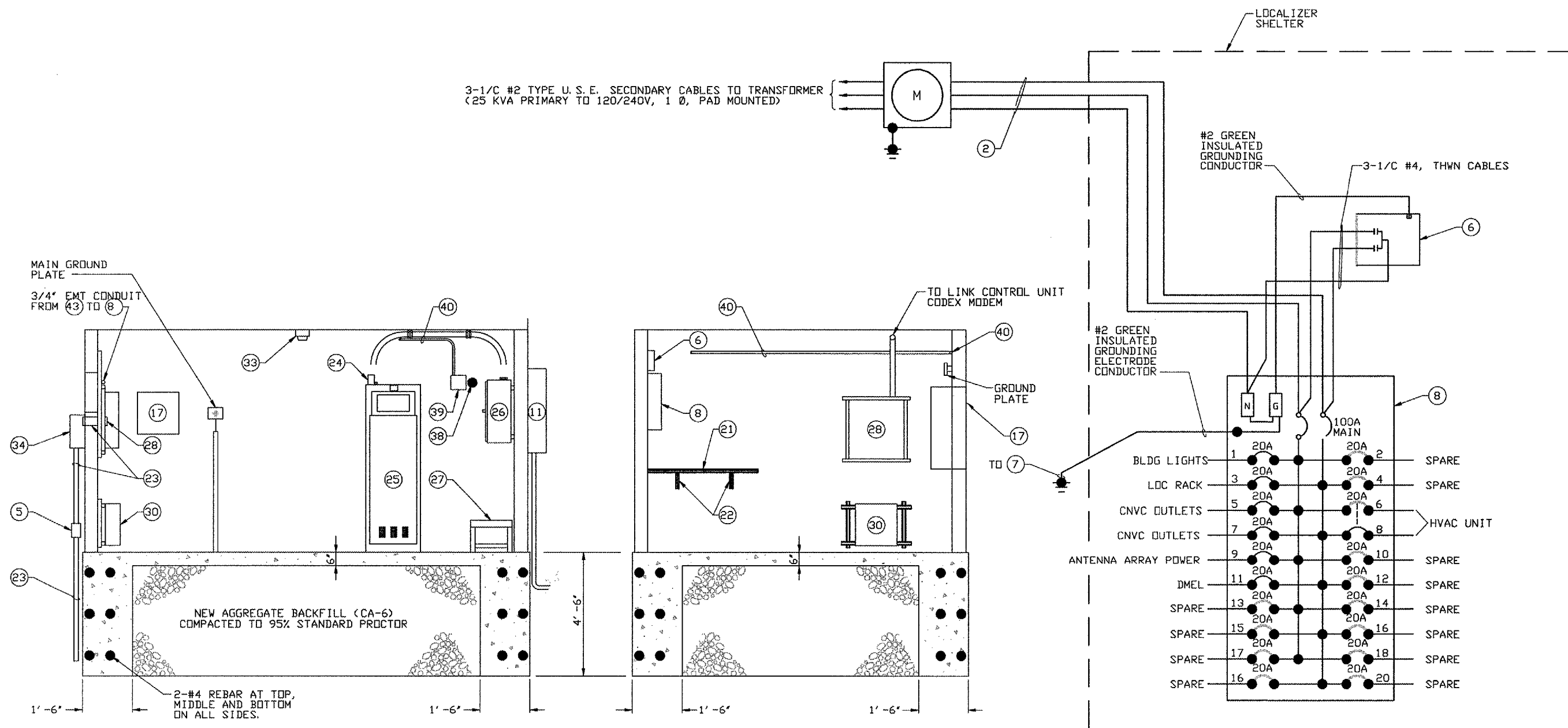
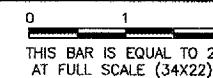
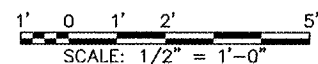


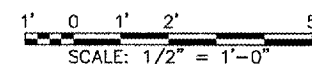
REVISIONS		
NUMBER	BY	DATE



**B** SECTION  
 SCALE: 1/2" = 1'-0"



**C** SECTION  
 SCALE: 1/2" = 1'-0"



**1** DETAIL - POWER PANEL  
 SCALE: NONE

WHERE SPECIFIC MANUFACTURERS OF EQUIPMENT ARE GIVEN, THE CONTRACTOR MAY SUBMIT ALTERNATE EQUIPMENT EQUAL TO THAT PROPOSED FOR CONSIDERATION BY THE ENGINEER.

**LANSING MUNICIPAL AIRPORT  
 LANSING, ILLINOIS**  
**INSTALL RUNWAY 36 LOCALIZER**  
**LOCALIZER SHELTER EQUIPMENT  
 LAYOUT - SHEET 2**

© copyright CMT, Inc.

**CMT**  
 CRAWFORD, MURPHY & TILLY, INC.  
 CONSULTING ENGINEERS  
 License No. 184-000613

Lansing Municipal  
**airport**

DESIGN BY:	AB
DRAWN BY:	JRO
CHECKED BY:	AB
APPROVED BY:	
DATE:	06/22/05
JOB No:	04297-03
IL PROJECT:	IGQ-3482
A.I.P. PROJECT:	3-17-0121-B23