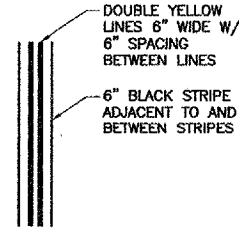


**GENERAL NOTES**

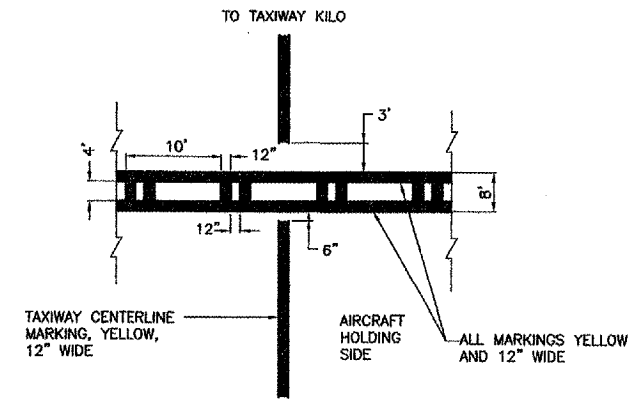
1. TRANSFORMER HOLDER MAY BE ANY COMMERCIALY AVAILABLE BRICK.
2. BREAKING GROOVE COUPLINGS SHALL NOT BE OVER 1" ABOVE GROUND LINE.
3. ISOLATION TRANSFORMERS COME WITH A FACTORY INSTALLED PLUG (TYPE 1, CLASS A, STYLE 2) AND RECEPTACLE (TYPE 1, CLASS A, STYLE 9). A TYPE 1, CLASS B, STYLE 3 PLUG AND TYPE 1, CLASS B, STYLE 10 RECEPTACLE SHALL BE INSTALLED ON THE 1/C, No. 8, 5000 V., L-824 TYPE C CABLES FOR CONNECTION TO EACH TRANSFORMER.
4. TO FURTHER REDUCE THE POSSIBILITY OF WATER/MOISTURE ENTRANCE INTO THE CONNECTOR BETWEEN THE CABLE AND THE FIELD ATTACHED CONNECTOR, IT IS REQUIRED THAT A HEAT SHRINKABLE TUBING WITH INTERNAL ADHESIVE BE APPLIED OVER THE ENTIRE CABLE CONNECTOR.
5. ALL LIGHTS, CABLES AND TRANSFORMERS TO BE REMOVED SHALL REMAIN THE PROPERTY OF THE AIRPORT. AT THE DISCRETION OF THE AIRPORT MANAGER THE CONTRACTOR MAY BE REQUIRED TO DISPOSE OF THESE MATERIALS OFFSITE.
6. DUCT MARKERS SHALL BE INSTALLED AT EVERY NEW DUCT AND AT EVERY EXISTING DUCT USED FOR THIS PROJECT.

**PAVEMENT MARKING NOTES**

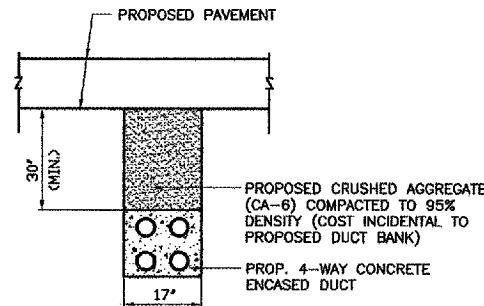
1. ALL TAXIWAY MARKINGS ARE YELLOW WITH A 6" BLACK BORDER.
2. THE PAVEMENT SURFACE SHALL BE CLEAN AND DRY PRIOR TO MARKING.



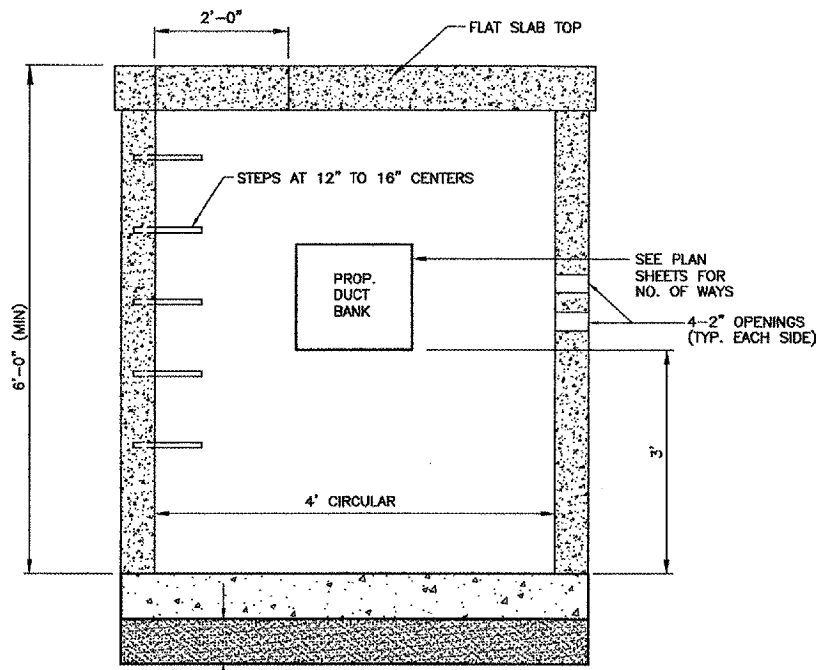
**TAXIWAY EDGE MARKINGS CONTINUOUS**  
NO SCALE



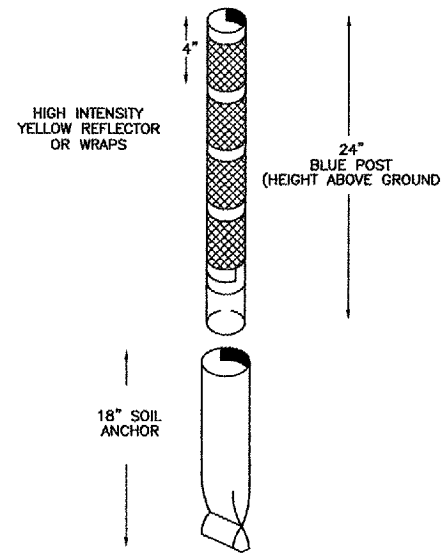
**ILS HOLDING POSITION MARKING**  
NO SCALE



**CONC ENCASED (4-WAY) ELECTRICAL DUCT BACKFILL**  
NO SCALE

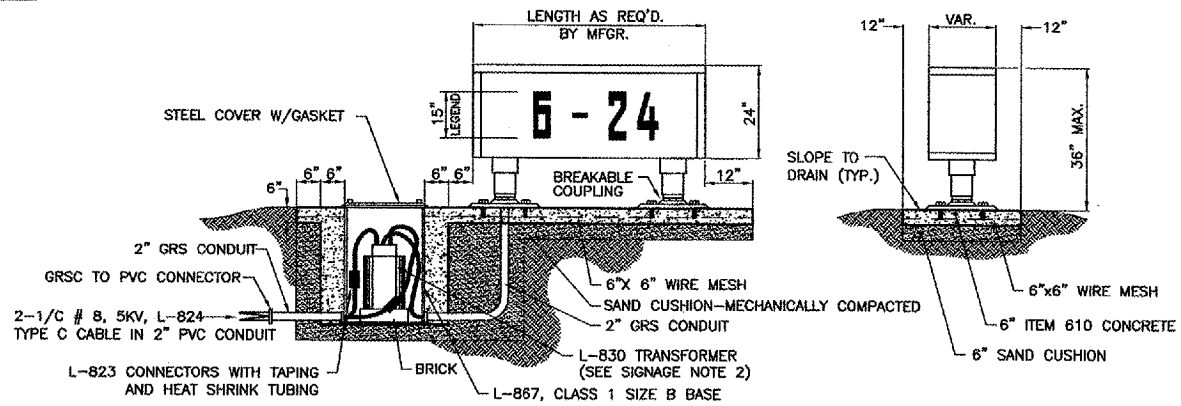


**ELEVATION**  
**ELECTRICAL MANHOLE**  
NOT TO SCALE



**TAXIWAY RETROREFLECTIVE MARKER DETAIL**  
NOT TO SCALE

NOTE: RETROREFLECTIVE MARKER SHALL BE UNIPAR, INC. EVAFLEX OR APPROVED EQUAL.



**PROPOSED AIRFIELD SIGN L-858**  
NOT TO SCALE

**SIGNAGE NOTES**

1. ALL SIGNS ARE 2-SIDED SIGNS. STYLE 2 AND CLASS 2 AS MANUFACTURED BY SIEMENS OR APPROVED EQUAL.
2. TRANSFORMER WATTAGE AS RECOMMENDED BY MANUFACTURER.
3. LIGHTED SIGNS SHALL BE BASE MOUNTED ONLY.
4. THE NUMBER OF MODULES PER SIGN SHALL BE AS RECOMMENDED BY THE MANUFACTURER.
5. CONTRACTOR SHALL SUBMIT DETAILED SHOP DRAWING INCLUDING SIGN, COLOR, SIZE AND PROPOSED LEGEND, IN ENOUGH DETAIL AND DETERMINE PROPOSED SPACING AND OTHER INFORMATION REQUIRED BY SPECIAL PROVISIONS. CONTRACTOR TO VERIFY PROPOSED SIGN LOCATIONS AND ORIENTATIONS WITH RESIDENT ENGINEER PRIOR TO INSTALLATION.

**NOTES**

1. ELECTRICAL MANHOLE (4' DIA.) SHALL BE PER IDOT STANDARD 602406 AS MODIFIED BY DETAIL ON THE PLANS.
2. ECCENTRIC AND CONCENTRIC CONE TOPS SHALL NOT BE USED. PRECAST REINFORCED CONCRETE FLAT SLAB TOP SHALL BE USED PER IDOT STANDARD 602601 AND 602406.
3. USE TYPE 1 FRAME AND LID MARKED "ELECTRIC" PER IDOT STANDARD 604001
4. PROPOSED ELECTRICAL MANHOLE SHALL ACCOMMODATE 4-2" OPENINGS ON EACH SIDE OF THE MANHOLE.

K:\Palwaukee\032902\draw\sheet\ FILE: elec-dtl1.dwg  
LAYOUT: Layout1  
UPDATE BY: johse  
SURVEY BOOK #  
DATE: Mon 6/27/05 4:47pm  
XREF DWG: tbcint.dwg

**REVISIONS**

NUMBER	BY	DATE

0 1 2  
THIS BAR IS EQUAL TO 2" AT FULL SCALE (34X22).

PALWAUKEE MUNICIPAL AIRPORT  
WHEELING / PROSPECT HEIGHTS ILLINOIS

NORTHEAST QUADRANT SITEWORK

ELECTRICAL DETAILS - SHEET 2/  
PAVEMENT MARKING DETAILS

© Copyright CMT, Inc.  
**CMT**  
CRAWFORD, MURPHY & TILLY, INC.  
CONSULTING ENGINEERS  
License No. 184-000613



DESIGN BY:	ARM
DRAWN BY:	JRO
CHECKED BY:	
APPROVED BY:	
DATE:	06/28/05
JOB No:	03290-02
ILLINOIS PROJECT:	PWK-3471