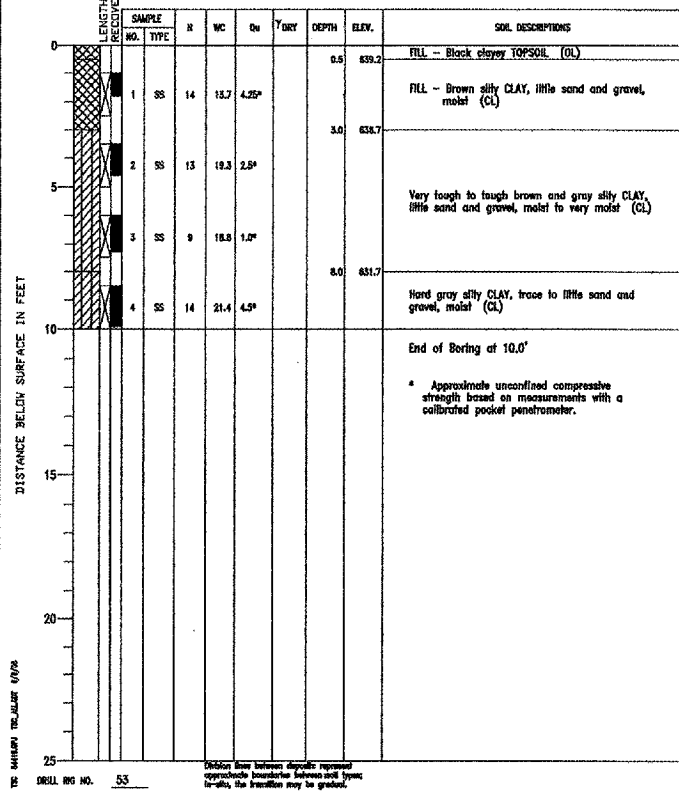
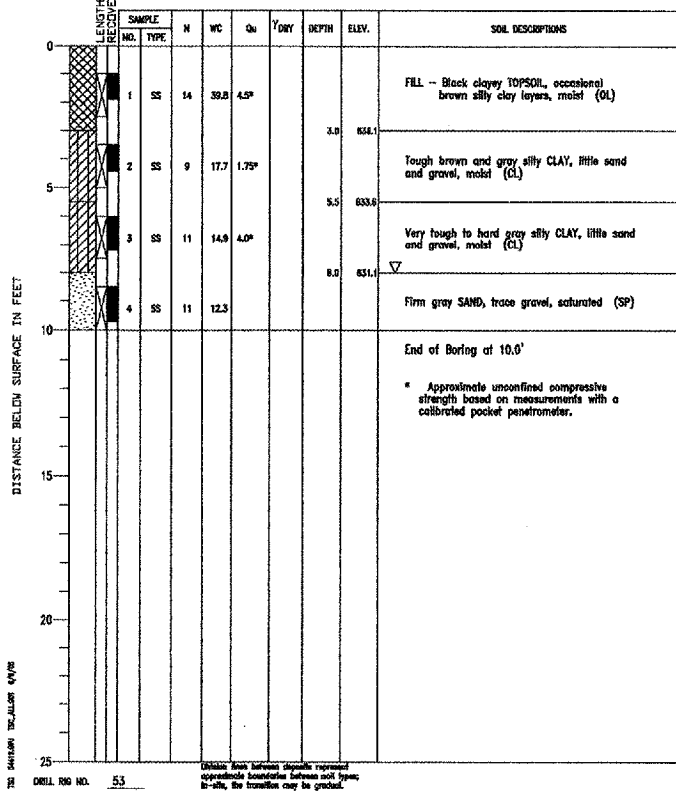


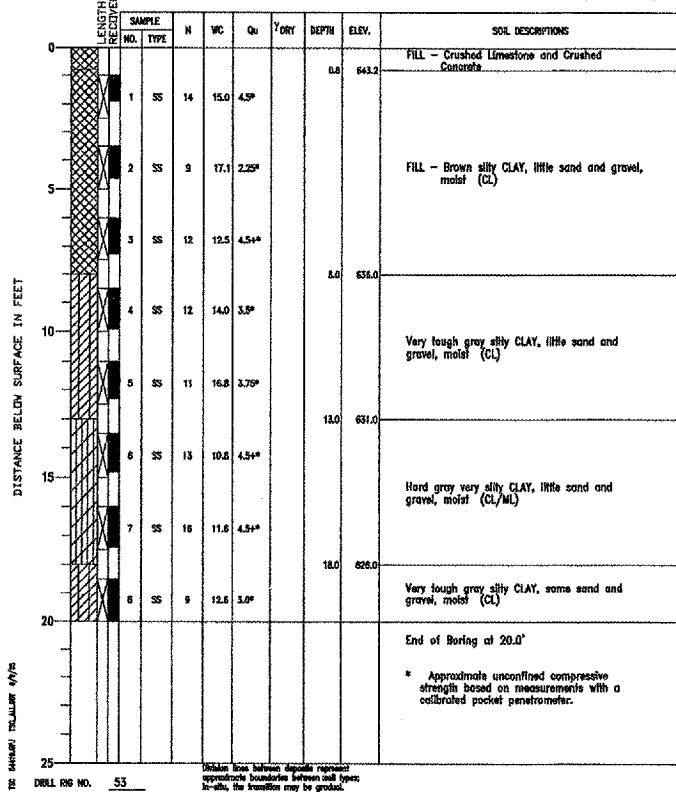
PROJECT Palwaukee Municipal Airport, Wheeling, Illinois  
 CLIENT Crawford, Murphy & Tilly, Aurora, Illinois  
 BORING 12 DATE STARTED 2-6-02 DATE COMPLETED 2-6-02 JOB L-54,419  
 ELEVATIONS GROUND SURFACE 639.7 WATER LEVEL OBSERVATIONS Dry  
 END OF BORING 629.7 WHILE DRILLING AT END OF BORING Dry  
 NE Quadrant



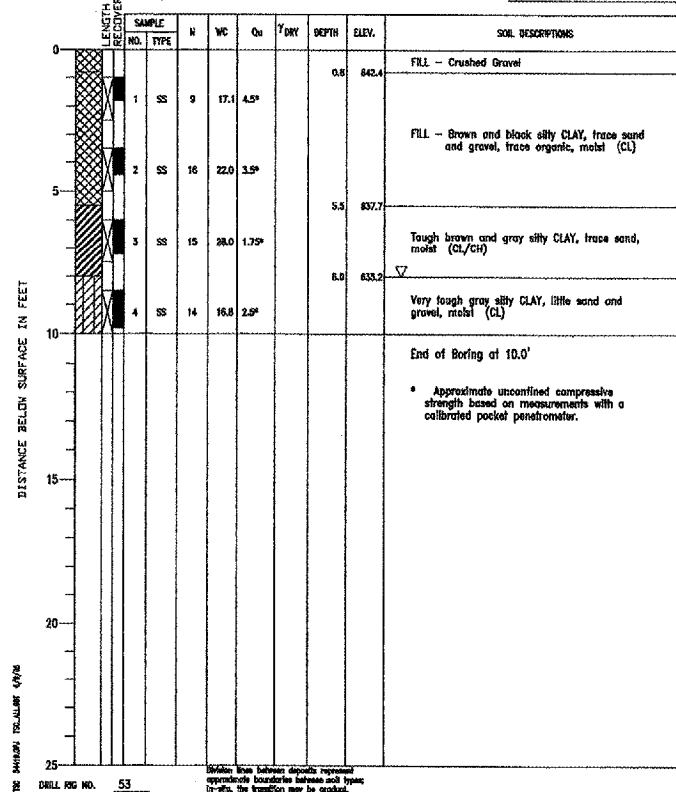
PROJECT Palwaukee Municipal Airport, Wheeling, Illinois  
 CLIENT Crawford, Murphy & Tilly, Aurora, Illinois  
 BORING 13 DATE STARTED 2-6-02 DATE COMPLETED 2-6-02 JOB L-54,419  
 ELEVATIONS GROUND SURFACE 639.1 WATER LEVEL OBSERVATIONS 8.0'  
 END OF BORING 629.1 WHILE DRILLING AT END OF BORING 8.0'  
 NE Quadrant



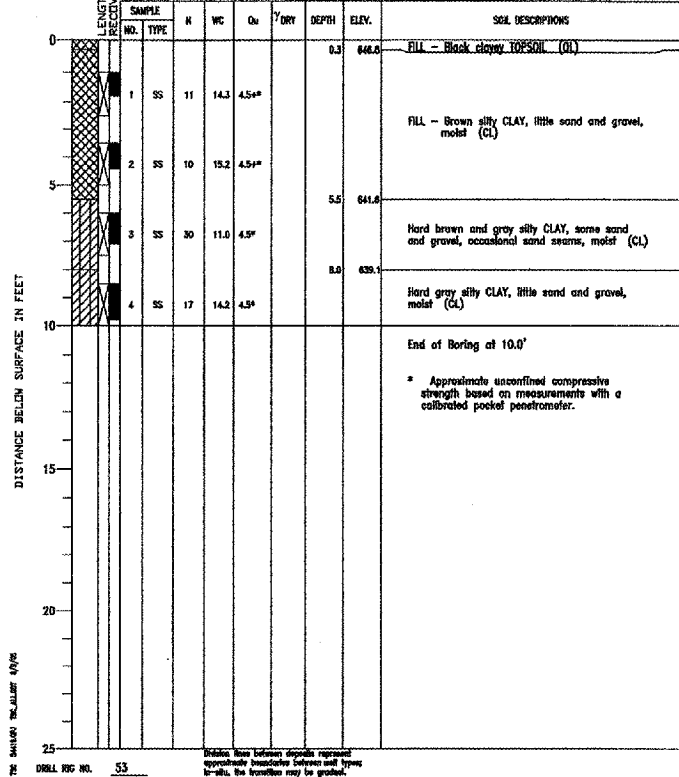
PROJECT Palwaukee Municipal Airport, Wheeling, Illinois  
 CLIENT Crawford, Murphy & Tilly, Aurora, Illinois  
 BORING 14 DATE STARTED 2-6-02 DATE COMPLETED 2-6-02 JOB L-54,419  
 ELEVATIONS GROUND SURFACE 644.0 WATER LEVEL OBSERVATIONS Dry  
 END OF BORING 624.0 WHILE DRILLING AT END OF BORING Dry  
 NE Quadrant



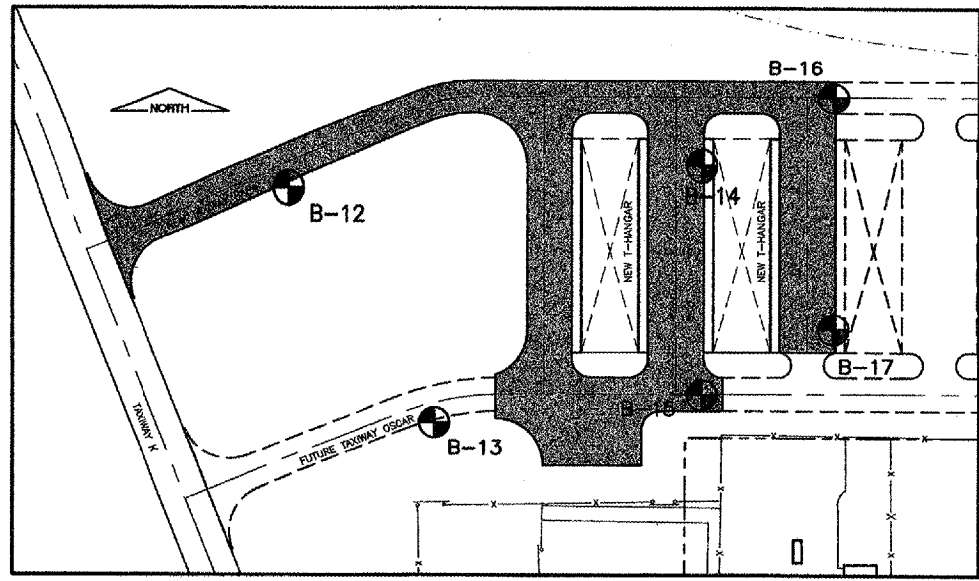
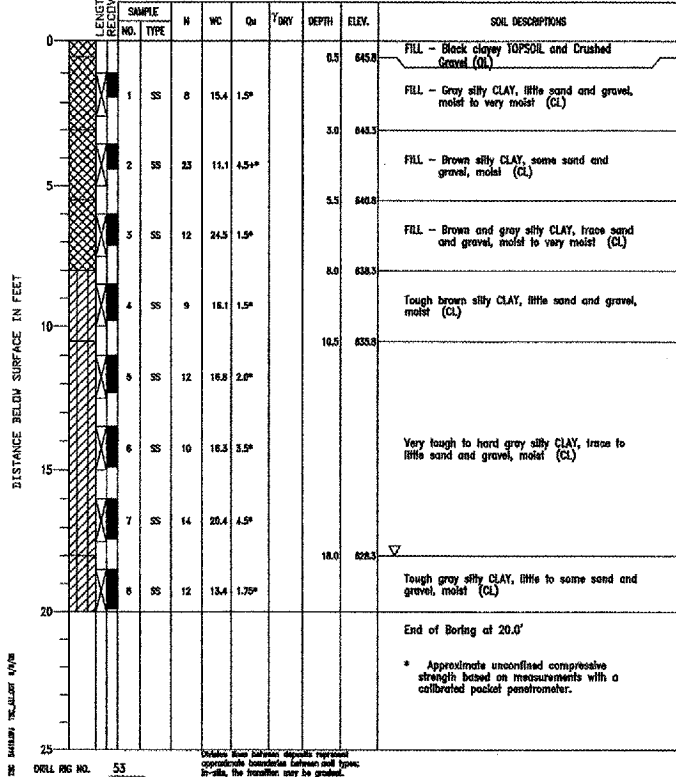
PROJECT Palwaukee Municipal Airport, Wheeling, Illinois  
 CLIENT Crawford, Murphy & Tilly, Aurora, Illinois  
 BORING 15 DATE STARTED 2-6-02 DATE COMPLETED 2-6-02 JOB L-54,419  
 ELEVATIONS GROUND SURFACE 643.2 WATER LEVEL OBSERVATIONS 8.0'  
 END OF BORING 633.2 WHILE DRILLING AT END OF BORING 8.0'  
 NE Quadrant



PROJECT Palwaukee Municipal Airport, Wheeling, Illinois  
 CLIENT Crawford, Murphy & Tilly, Aurora, Illinois  
 BORING 16 DATE STARTED 2-6-02 DATE COMPLETED 2-6-02 JOB L-54,419  
 ELEVATIONS GROUND SURFACE 647.1 WATER LEVEL OBSERVATIONS Dry  
 END OF BORING 637.1 WHILE DRILLING AT END OF BORING Dry  
 NE Quadrant



PROJECT Palwaukee Municipal Airport, Wheeling, Illinois  
 CLIENT Crawford, Murphy & Tilly, Aurora, Illinois  
 BORING 17 DATE STARTED 2-6-02 DATE COMPLETED 2-6-02 JOB L-54,419  
 ELEVATIONS GROUND SURFACE 646.3 WATER LEVEL OBSERVATIONS 18.0'  
 END OF BORING 626.3 WHILE DRILLING AT END OF BORING 18.0'  
 NE Quadrant

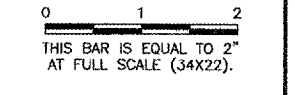


KEY MAP

| BORING TABLE |              |             |       |                   |                     |
|--------------|--------------|-------------|-------|-------------------|---------------------|
| NUMBER       | NORTHING     | EASTING     | DEPTH | TAXIWAY PAPA STA. | TAXIWAY PAPA OFFSET |
| B-12         | 1987402.4131 | 616461.1188 | 10'   | 12+20.31          | 2' RT.              |
| B-13         | 1987154.6007 | 616614.4803 | 10'   | 12+72.67          | 285' RT.            |
| B-14         | 1987419.5399 | 616897.0876 | 20'   | 16+73.51          | 72' RT.             |
| B-15         | 1987184.0399 | 616897.0581 | 10'   | 16+73.51          | 307.5' RT.          |
| B-16         | 1987489.0225 | 617036.0963 | 10'   | 18+12.51          | 2.5' RT.            |
| B-17         | 1987253.5225 | 617036.0668 | 20'   | 18+12.51          | 238' RT.            |

K:\Palwaukee\p032902\draw\sheet\...  
 FILE: eng-info.dwg  
 LAYOUT: Layout1  
 UPDATE BY: johse  
 SURVEY BOOK #  
 DATE: Wed 6/29/05 1:54pm  
 XREF DWG: hgr-Base.dwg  
 tbcint.dwg

| REVISIONS |    |      |
|-----------|----|------|
| NUMBER    | BY | DATE |
|           |    |      |
|           |    |      |



THIS BAR IS EQUAL TO 2" AT FULL SCALE (34X22).

PALWAUKEE MUNICIPAL AIRPORT  
 WHEELING / PROSPECT HEIGHTS ILLINOIS  
 NORTHWEST QUADRANT SITEWORK  
 ENGINEERING INFORMATION  
 NORTHEAST QUADRANT

© Copyright CMT, Inc.  
 CMT  
 CRAWFORD, MURPHY & TILLY, INC.  
 CONSULTING ENGINEERS  
 License No. 184-000613

|                   |          |
|-------------------|----------|
| DESIGN BY:        | MLK      |
| DRAWN BY:         | JRO      |
| CHECKED BY:       |          |
| APPROVED BY:      |          |
| DATE:             | 06/28/05 |
| JOB No:           | 03290-02 |
| ILLINOIS PROJECT: | PWK-3471 |