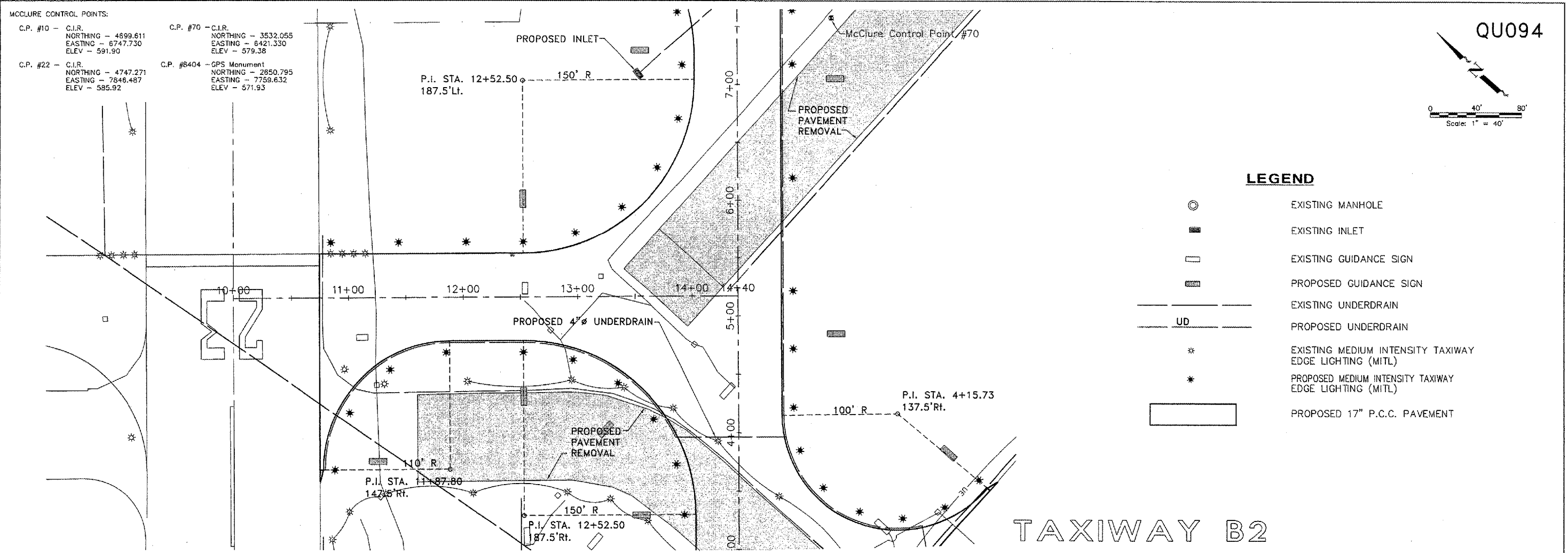
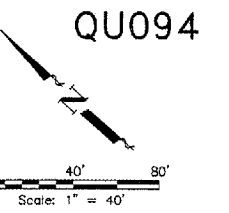


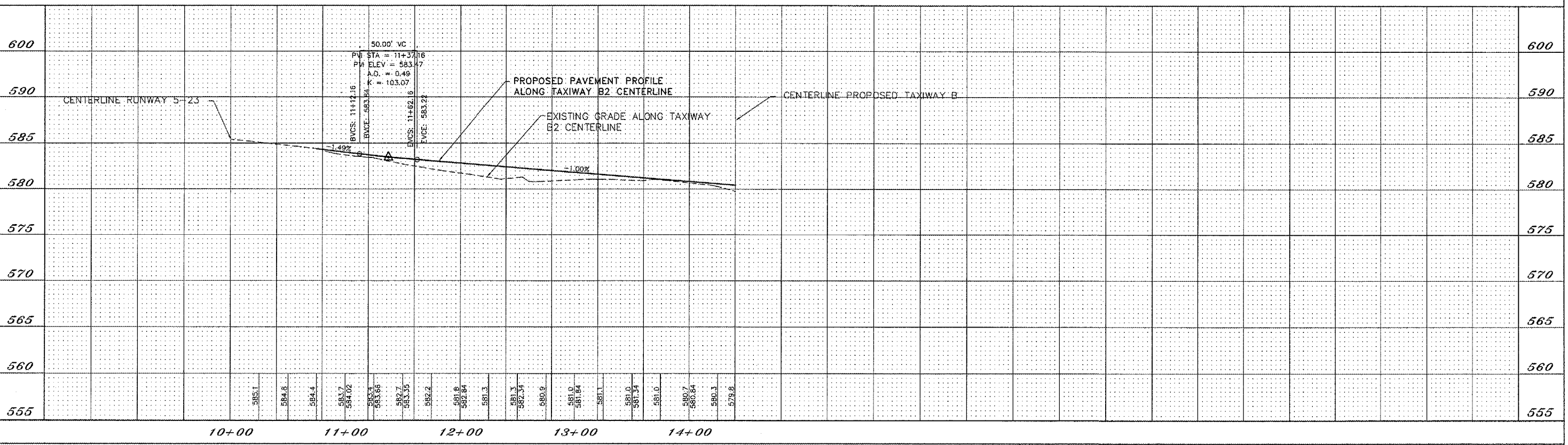
MCCLURE CONTROL POINTS:

C.P. #10 - C.I.R. NORTHING - 4699.611 EASTING - 6747.730 ELEV - 591.90	C.P. #70 - C.I.R. NORTHING - 3532.055 EASTING - 6421.330 ELEV - 579.38
C.P. #22 - C.I.R. NORTHING - 4747.271 EASTING - 7846.487 ELEV - 585.92	C.P. #8404 - GPS Monument NORTHING - 2850.795 EASTING - 7759.632 ELEV - 571.93



LEGEND

- EXISTING MANHOLE
- EXISTING INLET
- EXISTING GUIDANCE SIGN
- ▣ PROPOSED GUIDANCE SIGN
- EXISTING UNDERDRAIN
- UD --- PROPOSED UNDERDRAIN
- * EXISTING MEDIUM INTENSITY TAXIWAY EDGE LIGHTING (MITL)
- * PROPOSED MEDIUM INTENSITY TAXIWAY EDGE LIGHTING (MITL)
- ▭ PROPOSED 17" P.C.C. PAVEMENT



QUAD CITY INTERNATIONAL AIRPORT
Moline, IL



REVISIONS		
NO.	ITEM	DATE

PLOTTING SCALE: 1/40
DRAWN BY: MJK
CHECKED BY:
DATE: MAY 2005

McCLURE ENGINEERING ASSOCIATES, INC.
4700 Kennedy Drive East Moline, Illinois 61234
(309) 792-8350 FAX (309) 792-8374
Design Firm License: Illinois #184-000816
Copyright 2005 by McClure Engineering Associates, Inc.

PLAN & PROFILE TAXIWAY B2
STA. 10+00 - STA. 14+40
QUAD CITY INTERNATIONAL AIRPORT
RECONSTRUCT TAXIWAYS B and B2
MOLINE, ILLINOIS
FILE NAME: F:\M0105.065\DWG\0506SMOL.DWG
JOB NUMBER: 01-29-05-065

SHEET NO.
8
OF 28