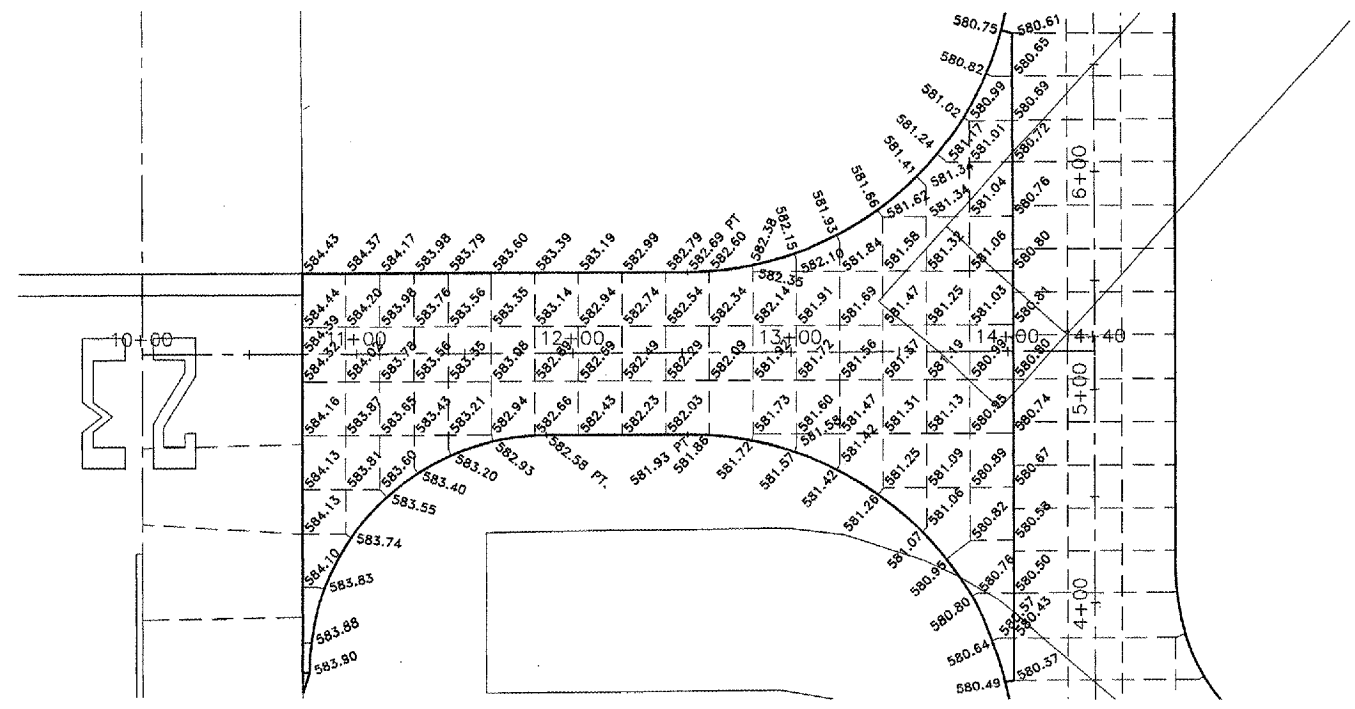
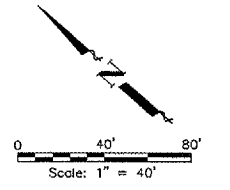


MCCLURE CONTROL POINTS:

C.P. #10 - C.I.R. NORTHING - 4699.611 EASTING - 6747.730 ELEV - 591.90	C.P. #22 - C.I.R. NORTHING - 4747.271 EASTING - 7846.487 ELEV - 585.92	C.P. #70 - C.I.R. NORTHING - 3532.055 EASTING - 6421.330 ELEV - 579.38	C.P. #8404 - GPS Monument NORTHING - 2650.795 EASTING - 7759.632 ELEV - 571.93
---	---	---	---



- NOTES:
- PAVEMENT ELEVATIONS SHOWN ARE TO FINISH SLAB GRADE UNLESS OTHERWISE NOTED.
 - DOWELS TO BE SET INTO EXISTING PAVEMENT SHALL BE DRILLED AND PLACED PERPENDICULAR TO THE EXISTING PAVEMENT.
- 580.38 = EXISTING ELEVATIONS
580.38 = PROPOSED ELEVATIONS



REVISIONS		
NO.	ITEM	DATE

PLOTTING SCALE:	1:40
DRAWN BY:	MJK
CHECKED BY:	
DATE:	MAY 2005

McCLURE ENGINEERING ASSOCIATES, INC.
 4700 Kennedy Drive East Moline, Illinois 61704
 (309) 792-9360 FAX (309) 792-0874
 Design Firm License: Illinois #184-000816
 Copyright © 2005 by McClure Engineering Associates, Inc.

PAVEMENT ELEVATIONS
 QUAD CITY INTERNATIONAL AIRPORT
 RECONSTRUCT TAXIWAYS B and B2
 MOLINE, ILLINOIS
 FILE NAME: T:\M0105.085\DWG\05G05MDL.DWG
 JOB NUMBER: 01-29-05-065