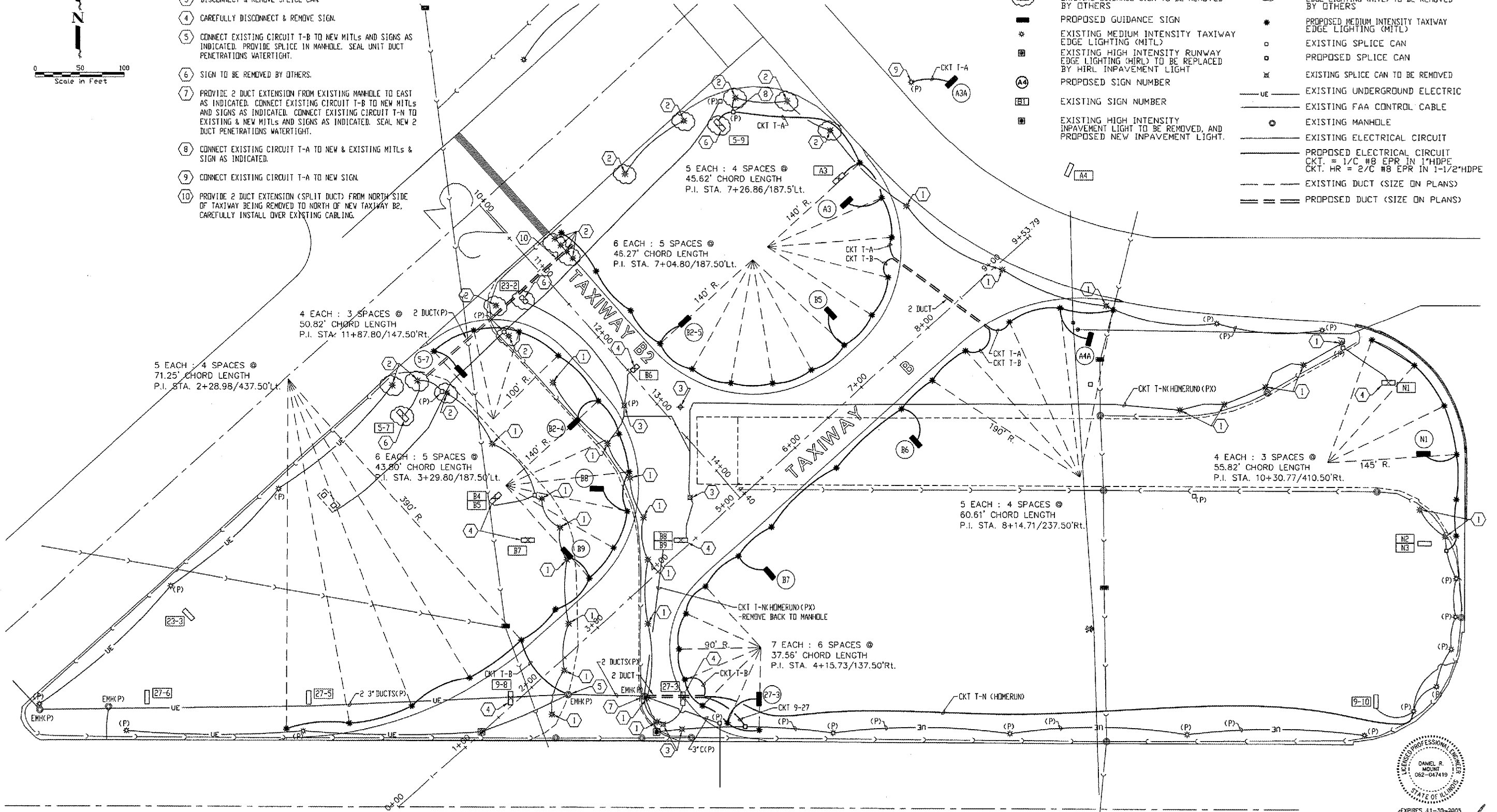
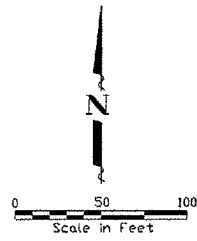


ELECTRICAL KEYED NOTES:

- 1 CAREFULLY DISCONNECT & REMOVE MITL. REMOVE BASE.
- 2 MITL TO BE REMOVED BY OTHERS.
- 3 DISCONNECT & REMOVE SPLICE CAN.
- 4 CAREFULLY DISCONNECT & REMOVE SIGN.
- 5 CONNECT EXISTING CIRCUIT T-B TO NEW MITLS AND SIGNS AS INDICATED. PROVIDE SPLICE IN MANHOLE. SEAL UNIT DUCT PENETRATIONS WATERTIGHT.
- 6 SIGN TO BE REMOVED BY OTHERS.
- 7 PROVIDE 2 DUCT EXTENSION FROM EXISTING MANHOLE TO EAST AS INDICATED. CONNECT EXISTING CIRCUIT T-B TO NEW MITLS AND SIGNS AS INDICATED. CONNECT EXISTING CIRCUIT T-N TO EXISTING & NEW MITLS AND SIGNS AS INDICATED. SEAL NEW 2 DUCT PENETRATIONS WATERTIGHT.
- 8 CONNECT EXISTING CIRCUIT T-A TO NEW & EXISTING MITLS & SIGN AS INDICATED.
- 9 CONNECT EXISTING CIRCUIT T-A TO NEW SIGN.
- 10 PROVIDE 2 DUCT EXTENSION (SPLIT DUCT) FROM NORTH SIDE OF TAXIWAY BEING REMOVED TO NORTH OF NEW TAXIWAY B2. CAREFULLY INSTALL OVER EXISTING CABLING.

ELECTRICAL SYMBOLS

- EXISTING GUIDANCE SIGN
- EXISTING GUIDANCE SIGN TO BE REMOVED
- EXISTING GUIDANCE SIGN TO BE REMOVED BY OTHERS
- PROPOSED GUIDANCE SIGN
- EXISTING MEDIUM INTENSITY TAXIWAY EDGE LIGHTING (MITL)
- EXISTING HIGH INTENSITY RUNWAY EDGE LIGHTING (HIRL) TO BE REPLACED BY HIRL INPAVEMENT LIGHT
- PROPOSED SIGN NUMBER
- EXISTING SIGN NUMBER
- EXISTING HIGH INTENSITY INPAVEMENT LIGHT TO BE REMOVED, AND PROPOSED NEW INPAVEMENT LIGHT.
- EXISTING MEDIUM INTENSITY TAXIWAY EDGE LIGHTING (MITL) TO BE REMOVED
- EXISTING MEDIUM INTENSITY TAXIWAY EDGE LIGHTING (MITL) TO BE REMOVED BY OTHERS
- PROPOSED MEDIUM INTENSITY TAXIWAY EDGE LIGHTING (MITL)
- EXISTING SPLICE CAN
- PROPOSED SPLICE CAN
- EXISTING SPLICE CAN TO BE REMOVED
- EXISTING UNDERGROUND ELECTRIC
- EXISTING FAA CONTROL CABLE
- EXISTING MANHOLE
- EXISTING ELECTRICAL CIRCUIT
- PROPOSED ELECTRICAL CIRCUIT
CKT. = 1/C #8 EPR IN 1"HDPE
CKT. HR = 2/C #8 EPR IN 1-1/2"HDPE
- EXISTING DUCT (SIZE ON PLANS)
- PROPOSED DUCT (SIZE ON PLANS)



IEFM CONSULTING ENGINEERS
 128 EAST 23RD AVENUE, P.O. BOX 130
 COAL VALLEY, ILLINOIS 61240
 PHONE (309) 792-5150
 FAX (309) 792-5160
 IEFM@IEFMCONSULTINGENGINEERS.COM

SIGNATURE
 DATE
 6-9-05

QUAD CITY INTERNATIONAL AIRPORT
 Moline, IL



REVISIONS		
NO.	ITEM	DATE

PLOTTING SCALE: 1" = 50'
 DRAWN BY: CNR
 CHECKED BY: DRM
 DATE: JUNE 2005

McCLURE ENGINEERING ASSOCIATES, INC.
 4789 Kennedy Drive
 East Moline, Illinois 61244
 Phone (309) 792-9350
 Fax (309) 792-8574
 Design Firm License: Illinois #184-069816
 Copyright © 2005 by McClure Engineering Associates, Inc.

LIGHTING AND SIGNING PLAN
 QUAD CITY INTERNATIONAL AIRPORT
 RECONSTRUCT TAXIWAYS B and B2
 MOLINE, ILLINOIS
 FILE NAME: H:\2005\DMG\05-122-E1.DWG
 JOB NUMBER: 01-29-05-065

SHEET NO.
 15
 OF 28