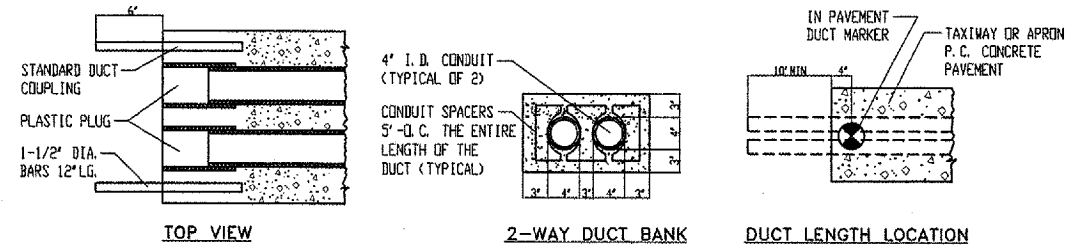


TRENCH WIDTHS	
DUCTS	WIDTH
1	6'
2	10'

CONDUIT TRENCH DETAIL

NO SCALE

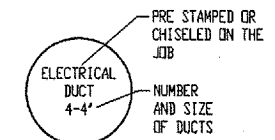
NOTE:
TRENCH UTILIZING ADDITIONAL DUCTS SHALL BE WIDENED TO PROVIDE SPACING AS SHOWN.



UNDERGROUND CABLE DUCT

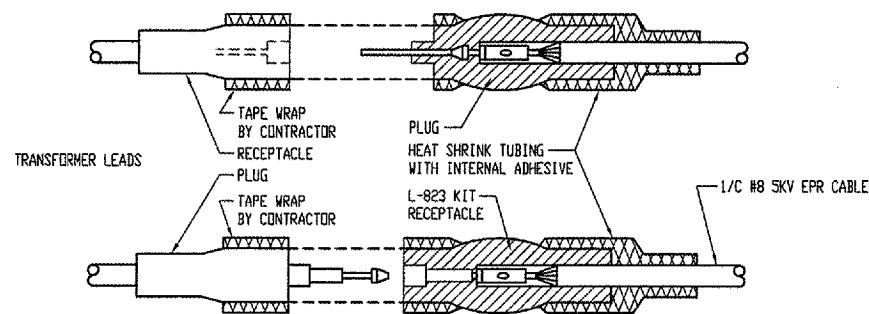
NO SCALE

- NOTES:
- DIMENSIONS SHOWN ARE MINIMUM.
 - TOP OF CONCRETE ENCASUREMENT SHALL NOT BE LESS THAN 2'-0" BELOW SUBGRADE.
 - CONCRETE FOR DUCTS SHALL MEET 610 SPECIFICATIONS.
 - DUCTS SHALL BE SCHEDULE 40 P. V. C.
 - ALL DUCTS SHALL BE 4" UNLESS OTHERWISE SPECIFIED.
 - THE ENDS OF THE DUCTS SHALL NOT BE LESS THAN 10'-0" FROM THE EDGE OF ANY PAVED SURFACE.
 - WHERE POSSIBLE DUCTS SHALL BE INSTALLED AT P. C. OR P. T.



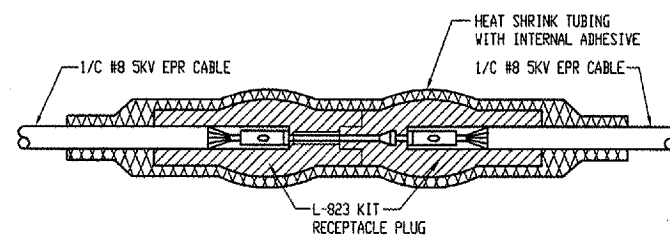
IN PAVEMENT DUCT MARKER

NO SCALE



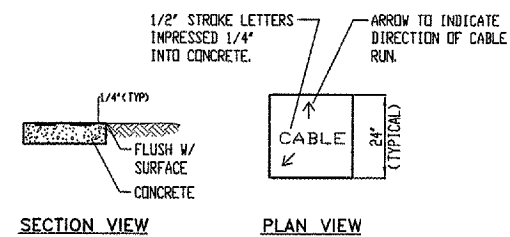
L-823 CONNECTOR DETAIL AT ISOLATION TRANSFORMERS

NO SCALE



L-823 CABLE TO CABLE CONNECTOR DETAIL

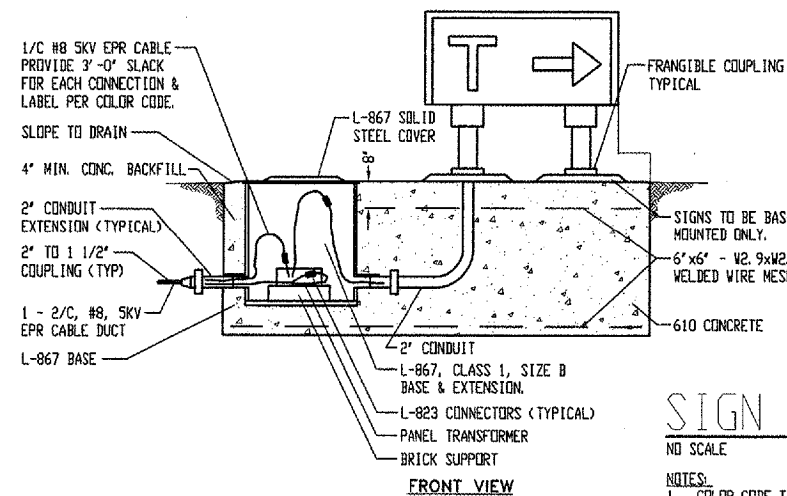
NO SCALE



TURF CABLE MARKERS

NO SCALE

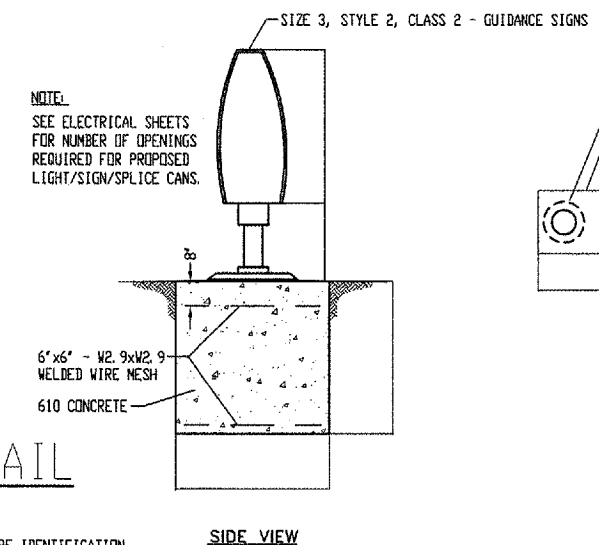
- NOTES:
- MARKERS SHALL BE PLACED AS DIRECTED BY ENGINEER.
 - COST OF CONCRETE MARKERS IS INCIDENTAL TO THE ASSOCIATED ITEMS OF DUCT OR CABLE.
 - EDGE EXPOSED CONCRETE WITH A 1/4" RADIUS TOOL.
 - WHERE ADDITIONAL SPACE TO FIT LEGEND IS REQUIRED, SOME OF THE FOLLOWING METHODS SHALL BE EMPLOYED:
 - REDUCE LETTER SIZE TO 3" HIGH, 2" WIDE.
 - INCREASE THE MARKER SIZE TO 30"x30" MAX.
 - PROVIDE ADDITIONAL MARKERS PLACED SIDE BY SIDE.



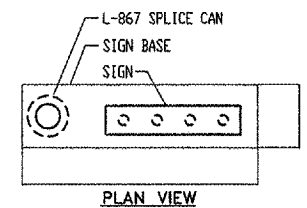
SIGN DETAIL

NO SCALE

- NOTES:
- COLOR CODE TAPE FOR WIRE IDENTIFICATION 6" BEFORE L-823 CONNECTOR.



SIDE VIEW



PLAN VIEW

REVISIONS		
NO.	ITEM	DATE

PLOTTING SCALE:	NONE
DRAWN BY:	CNR
CHECKED BY:	DRM
DATE:	JUNE 2005