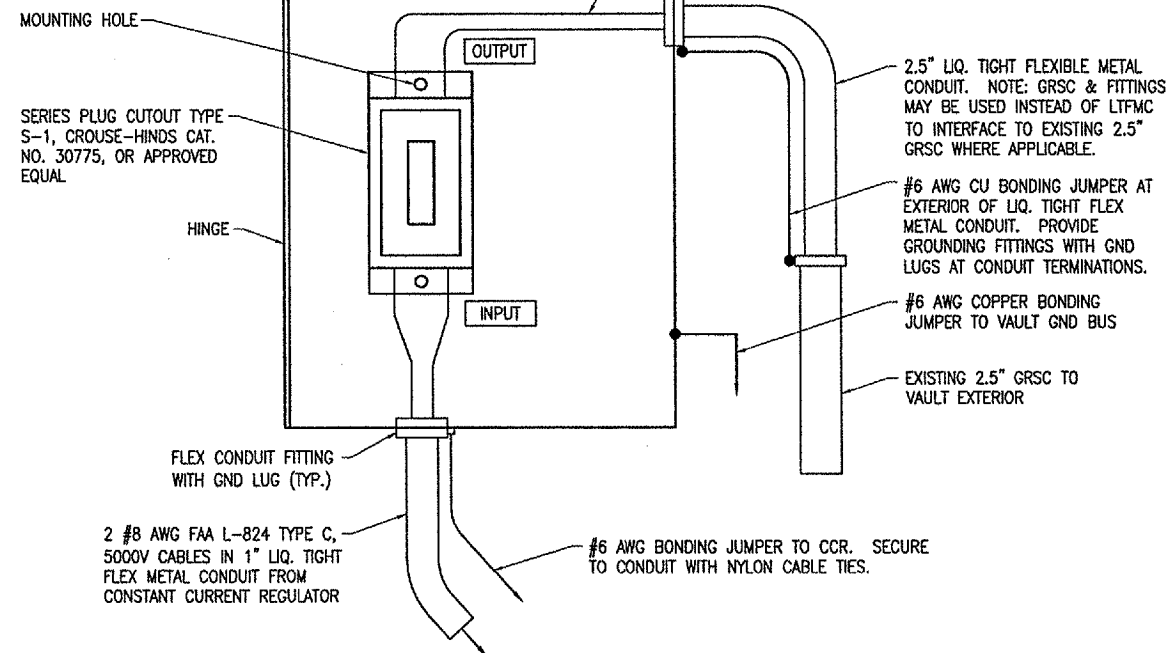
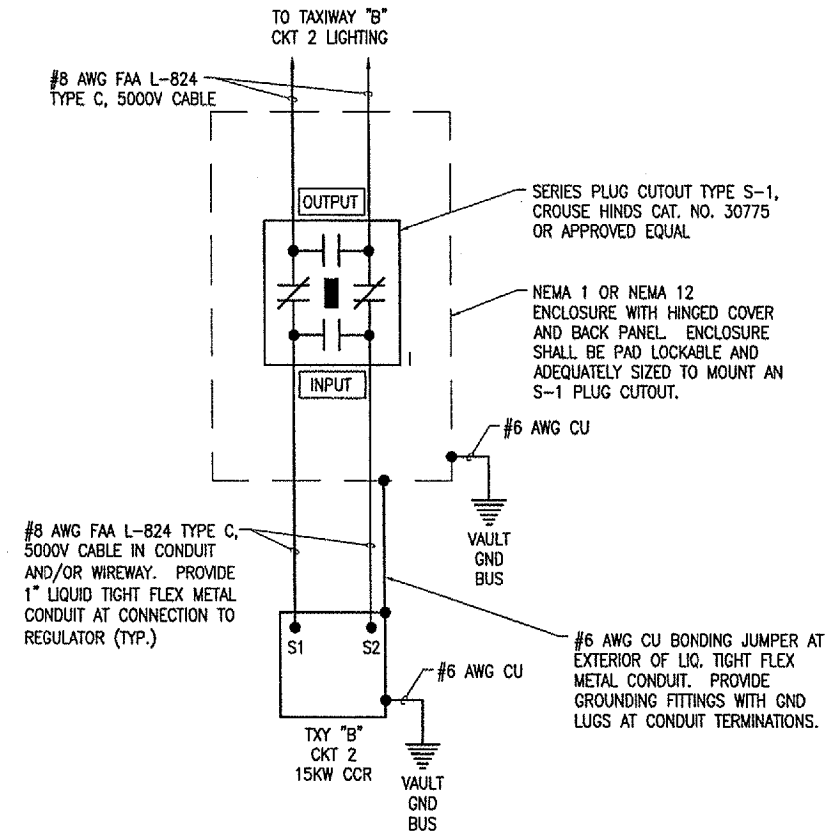


14"H x 12"W x 8"D (APPROXIMATE DIMENSIONS) NEMA 1 OR NEMA 12 ENCLOSURE WITH HINGED COVER & BACK PANEL. NOTE FRONT DOOR OF ENCLOSURE NOT SHOWN FOR CLARITY. ADJUST ENCLOSURE DIMENSIONS AS NECESSARY TO ACCOMMODATE THE RESPECTIVE CUTOUT. PROVIDE STRUT SUPPORT WITH FLOOR FLANGE & ANCHORS TO MOUNT TO CONCRETE PAD. MOUNT APPROXIMATELY 4'-6" TO 5'-6" ABOVE FINISHED FLOOR.



SERIES PLUG CUTOUT MOUNTING DETAIL

NOT TO SCALE



HIGH VOLTAGE WIRING SCHEMATIC

LEGEND PLATE SCHEDULE	
DEVICE	LEGEND PLATE LABEL
VAULT SERVICE & DISTRIBUTION PANEL	VAULT SERVICE & DISTRIBUTION PANEL 120/240VAC, 1PH, 3W
MAIN SERVICE BREAKER IN PANELBOARD	MAIN SERVICE BREAKER
RUNWAY 4-22 CCR	RUNWAY 4-22
RUNWAY 12L-30R CCR	RUNWAY 12L-30R
RUNWAY 12R-30L CCR	RUNWAY 12R-30L
TAXIWAY A CCR	TAXIWAY A
TAXIWAY B CIRCUIT #1 CCR	TAXIWAY B CIRCUIT #1
TAXIWAY B CIRCUIT #2 CCR	TAXIWAY B CIRCUIT #2
TAXIWAY C CCR	TAXIWAY C
CUTOUT ENCLOSURE FOR TAXIWAY B CIRCUIT #2	TAXIWAY B CIRCUIT #2
CUTOUT LINE SIDE CONNECTION	INPUT
CUTOUT LOAD SIDE CONNECTION	OUTPUT
L-841 RELAY PANEL	L-841 RELAY PANEL

NOTES
ALL LEGEND PLATES SHALL BE ENGRAVED PHENOLIC OR PLASTIC MATERIAL, BLACK LETTERS ON A WHITE BACKGROUND.

NOTES

1. PROVIDE PHENOLIC ENGRAVED LEGEND PLATES FOR EACH CONSTANT CURRENT REGULATOR (EXISTING & NEW) NOTING THE RUNWAY AND/OR TAXIWAY SERVED.
2. THE NEW PLUG CUTOUT CABINET SHALL BE FURNISHED WITH A PHENOLIC ENGRAVED LEGEND PLATE THAT IDENTIFIES THE RESPECTIVE TAXIWAY CIRCUIT OR REGULATOR.
3. PROVIDE PHENOLIC ENGRAVED LEGEND PLATES FOR THE NEW CUTOUT TO IDENTIFY THE RESPECTIVE REGULATOR OUTPUT CONNECTION AND THE RESPECTIVE CIRCUIT LOAD CONNECTION.
4. BOND PLUG CUTOUT CABINET TO THE VAULT GROUND BUS WITH A #6 AWG COPPER BONDING JUMPER.
5. PROVIDE ADEQUATE WORKING SPACE IN FRONT OF EACH CUTOUT ENCLOSURE TO MEET NEC CLEARANCE REQUIREMENTS.
6. PROVIDE WARNING SIGN ON VAULT DOOR LABELED "DANGER - HIGH VOLTAGE - KEEP OUT" PER THE REQUIREMENTS OF NEC 110.34 (c).
7. LIQUID TIGHT FLEXIBLE METAL CONDUIT SHALL BE U.L. LISTED SUITABLE FOR GROUNDING. LIQUID TIGHT FLEXIBLE METAL CONDUIT THAT IS NOT LISTED SUITABLE FOR GROUNDING SHALL REQUIRE AN EXTERNAL OR INTERNAL #6 AWG COPPER BONDING JUMPER WITH APPROPRIATE GROUNDING FITTINGS OR LUGS. LIQUID TIGHT FLEXIBLE METAL CONDUIT THAT IS USED FOR FLEXIBILITY (INCLUDING CONNECTIONS TO CCR'S & TRANSFORMERS) SHALL REQUIRE AN EXTERNAL BONDING JUMPER OR INTERNAL EQUIPMENT GROUNDING CONDUCTOR PER NEC 350.60.

LEGEND

- "I" DENOTES PLUG CUTOUT WITH PLUG INSERTED
- "P" DENOTES PLUG CUTOUT WITH PLUG PULLED
- "CCR" DENOTES CONSTANT CURRENT REGULATOR

BY	DATE	REVISION

SAINT LOUIS DOWNTOWN AIRPORT
A Division of Bi-State Development Agency
ALP, PROJ. 3-17-0039-B16
CPS-3460

845-05SGND_0800	06/17/05
E-6014.DWG	06/27/05
Scale: NONE	06/30/05
Date: 06/16/05	
LAYOUT: KNIL	
DRAWN: MV	
REVIEWED: C.A.H.	

HANSON
Hanson Professional Services Inc.
4227 Earth City Expressway, Suite 130
St. Louis, MO 63045-1308
Offices Nationwide

TAXI GUIDANCE SIGN IMPROVEMENTS
HIGH VOLTAGE WIRING SCHEMATIC

JUN 30, 2005 12:27 PM BAK I:\AIRPORTS\ST. LOUIS DOWNTOWN\455555\AIRPORT\SHETS\845-05.DWG - Work-FLR