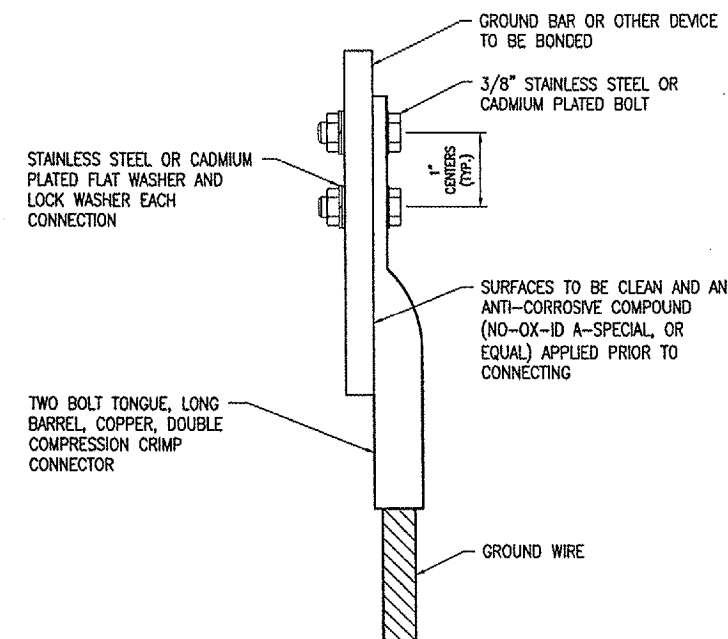


VAULT GROUND RISER

NOTES

1. CONNECTIONS TO GROUND BUS BARS SHALL BE WITH 2-HOLE TONGUE LONG BARREL COMPRESSION LUGS BOLTED TO THE BUS BAR.
2. INSULATED GROUND WIRES SHALL HAVE GREEN COLORED INSULATION FOR ALL CONDUCTOR AWG AND KCMIL.
3. CONSTANT CURRENT REGULATORS SHALL BE SHUT OFF PRIOR TO DISCONNECTING EXISTING FRAME GROUNDS AND SHALL REMAIN OFF UNTIL GROUNDING UPGRADES AND NEW GROUND CONNECTIONS ARE COMPLETED.
4. ALL WORK SHOWN ON THIS SHEET SHALL BE PAID FOR UNDER ITEM AR109200 "INSTALL ELECTRICAL EQUIPMENT" PER LUMP SUM.



2 HOLE LONG BARREL COMPRESSION LUG TABLE

WIRE SIZE	BURNDY CAT. NO.	THOMAS & BETTS CAT. NO.
#6 AWG STRANDED	YA6C-2TC3B	256-30695-1158
#2 AWG STRANDED	YA2C-2TC3B	256-30695-1160
#1/0 AWG STRANDED	YA25-2TC3B	256-30695-1162
#2/0 AWG STRANDED	YA26-2TC3B	256-30695-1116
#3/0 AWG STRANDED	YA27-2TC3B	54816BE
#4/0 AWG STRANDED	YA28-2TC3B	256-30695-1117

NOTES

1. ALL CONNECTIONS TO GROUND BUS BAR SHALL BE WITH 2 HOLE TONGUE LONG BARREL COMPRESSION LUGS BOLTED TO THE BUS BAR.
2. GROUND WIRE CONNECTIONS TO EQUIPMENT SHALL BE WITH 2 HOLE TONGUE LONG BARREL COMPRESSION LUGS BOLTED TO THE DEVICE OR WITH THE RESPECTIVE EQUIPT MANUFACTURER'S LUG OR TERMINAL WHERE APPLICABLE.
3. GROUNDING ELECTRODE CONDUCTORS, BONDING JUMPERS, & INDIVIDUAL GROUND WIRES SHALL NOT BE INSTALLED IN METAL CONDUIT.
4. ALL CONNECTIONS SHALL BE COATED WITH A CORROSION PREVENTATIVE COMPOUND (SANCHEM INC. NO-OX-ID A-SPECIAL, OR BURNDY PENETROX E, OR APPROVED EQUAL) BEFORE JOINING. ALL COPPER BUS BARS SHALL BE CLEANED PRIOR TO MAKING CONNECTIONS TO REMOVE SURFACE OXIDATION. CLEAN SURFACES, OF RESPECTIVE DEVICES TO BE BONDED, TO BARE METAL, PER NEC 250-12.

GROUNDING LUG CONNECTION DETAIL

DATE	REVISION	BY

SAINT LOUIS DOWNTOWN AIRPORT
A Division of Bi-State Development Agency
ALP. PROJ.: 3-17-0039-B16

PROJECT NO. 845-055GND_0800	DATE 06/16/05
DESIGNER E-501.DWG	SCALE AS SHOWN
DRAWN KNL	CHECKED KNL
DATE 06/23/05	DATE 06/17/05
REVIEWED C.A.H.	DATE 06/30/05

HANSON
Hanson Professional Services Inc.
4227 Fairway City Center, Suite 130
St. Louis, MO 63045-1308
Offices Nationwide

TAXI GUIDANCE SIGN IMPROVEMENTS
VAULT GROUND RISER AND GROUNDING DETAILS