


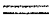
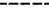




LEGEND

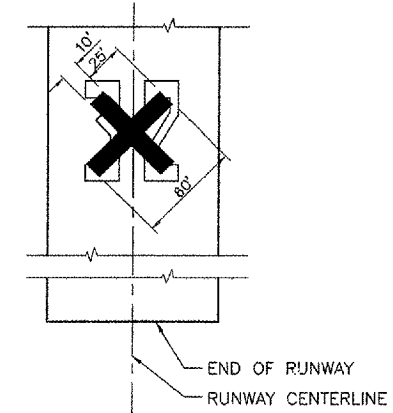
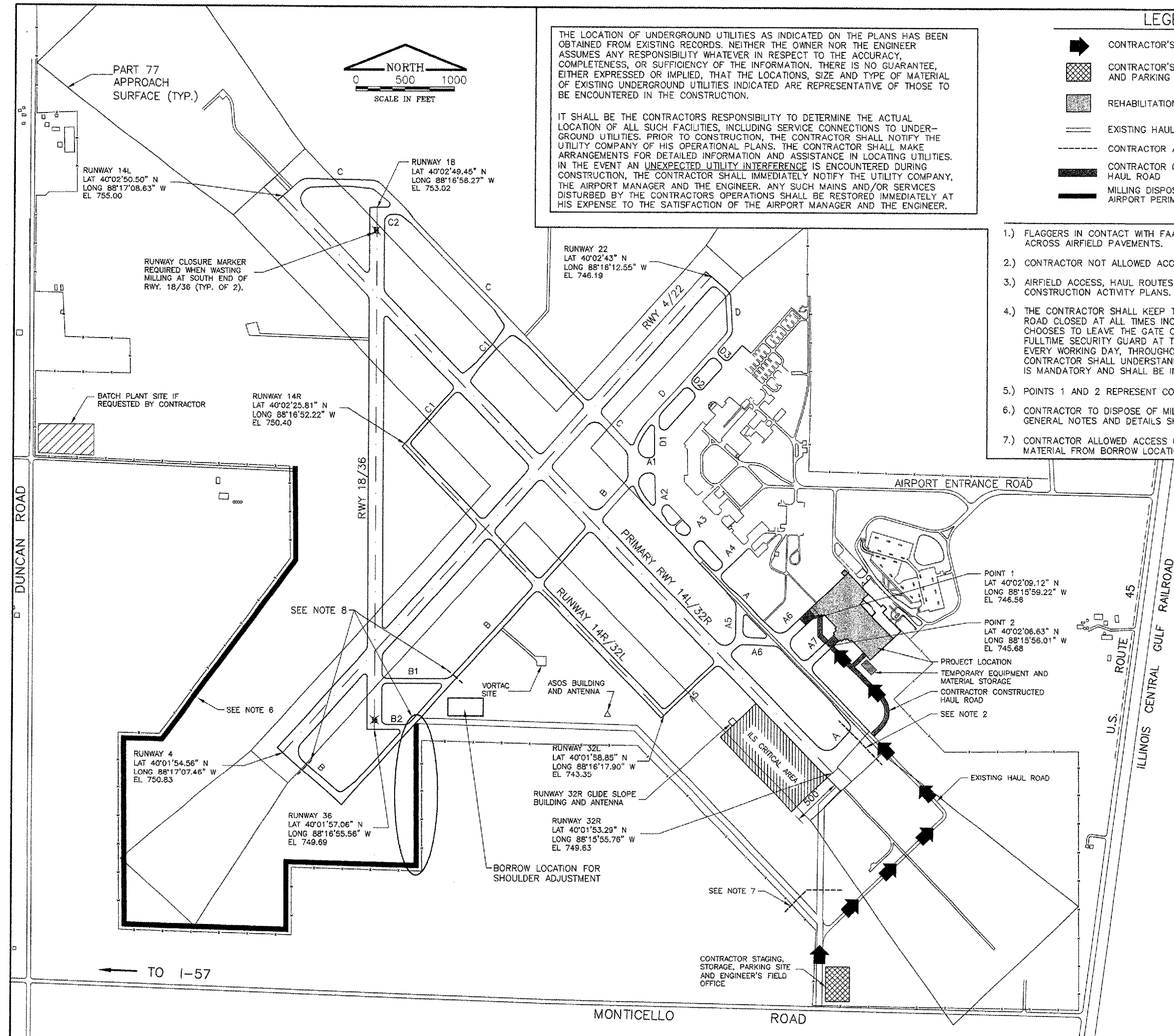
-  CONTRACTOR'S ACCESS ROUTE
-  CONTRACTOR'S STAGING, STORAGE AND PARKING SITE
-  REHABILITATION WORK AREAS
-  EXISTING HAUL ROAD
-  CONTRACTOR ACCESS RESTRICTED
-  CONTRACTOR CONSTRUCTED HAUL ROAD
-  MILLING DISPOSAL AREA - AIRPORT PERIMETER ROAD

NOTES

- 1.) FLAGGERS IN CONTACT WITH FAA GROUND CONTROL WILL BE REQUIRED FOR ACCESS ACROSS AIRFIELD PAVEMENTS.
- 2.) CONTRACTOR NOT ALLOWED ACCESS WITHIN 250' OF RUNWAY 14L/32R CENTERLINE.
- 3.) AIRFIELD ACCESS, HAUL ROUTES AND FLAGGER REQUIREMENTS TO BE AS SHOWN IN CONSTRUCTION ACTIVITY PLANS.
- 4.) THE CONTRACTOR SHALL KEEP THE CONTRACTOR'S ACCESS GATE ON MONTICELLO ROAD CLOSED AT ALL TIMES INCLUDING WORK HOURS. IF THE CONTRACTOR CHOOSES TO LEAVE THE GATE OPEN DURING WORKING HOURS HE SHALL POST A FULLTIME SECURITY GUARD AT THE GATE TO PREVENT UNAUTHORIZED ENTRIES EVERY WORKING DAY, THROUGHOUT THE HOURS THE CONTRACTOR IS ON SITE. THE CONTRACTOR SHALL UNDERSTAND THAT THE USE OF A FULLTIME SECURITY GUARD IS MANDATORY AND SHALL BE INCLUDED IN THE CONTRACT.
- 5.) POINTS 1 AND 2 REPRESENT CONSTRUCTION LIMITS CLOSEST TO RUNWAY 14L/32R.
- 6.) CONTRACTOR TO DISPOSE OF MILLINGS AT LOCATION SHOWN. SEE DETAIL ON GENERAL NOTES AND DETAILS SHEET.
- 7.) CONTRACTOR ALLOWED ACCESS ONLY WHEN DISPOSING OF MILLINGS AND OBTAINING MATERIAL FROM BORROW LOCATION.
- 8.) TAXIWAY B TO BE CLOSED FROM TAXIWAY B1 TO THE APPROACH OF RUNWAY 4 DURING CONSTRUCTION OF AIRPORT PERIMETER ROAD IN THIS LOCATION. PLACE HIGH-PROFILE BARRICADES AT LOCATIONS INDICATED.

THE LOCATION OF UNDERGROUND UTILITIES AS INDICATED ON THE PLANS HAS BEEN OBTAINED FROM EXISTING RECORDS. NEITHER THE OWNER NOR THE ENGINEER ASSUMES ANY RESPONSIBILITY WHATEVER IN RESPECT TO THE ACCURACY, COMPLETENESS, OR SUFFICIENCY OF THE INFORMATION. THERE IS NO GUARANTEE, EITHER EXPRESSED OR IMPLIED, THAT THE LOCATIONS, SIZE AND TYPE OF MATERIAL OF EXISTING UNDERGROUND UTILITIES INDICATED ARE REPRESENTATIVE OF THOSE TO BE ENCOUNTERED IN THE CONSTRUCTION.

IT SHALL BE THE CONTRACTORS RESPONSIBILITY TO DETERMINE THE ACTUAL LOCATION OF ALL SUCH FACILITIES, INCLUDING SERVICE CONNECTIONS TO UNDERGROUND UTILITIES. PRIOR TO CONSTRUCTION, THE CONTRACTOR SHALL NOTIFY THE UTILITY COMPANY OF HIS OPERATIONAL PLANS. THE CONTRACTOR SHALL MAKE ARRANGEMENTS FOR DETAILED INFORMATION AND ASSISTANCE IN LOCATING UTILITIES. IN THE EVENT AN UNEXPECTED UTILITY INTERFERENCE IS ENCOUNTERED DURING CONSTRUCTION, THE CONTRACTOR SHALL IMMEDIATELY NOTIFY THE UTILITY COMPANY, THE AIRPORT MANAGER AND THE ENGINEER. ANY SUCH MAINS AND/OR SERVICES DISTURBED BY THE CONTRACTORS OPERATIONS SHALL BE RESTORED IMMEDIATELY AT HIS EXPENSE TO THE SATISFACTION OF THE AIRPORT MANAGER AND THE ENGINEER.



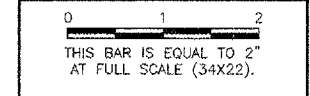
CLOSED RUNWAY MARKER DETAIL
 N.T.S.

RUNWAY CLOSURE MARKER NOTES

- 1.) MARKERS SHALL BE YELLOW.
- 2.) MARKERS SHALL BE PAINTED PLYWOOD, PLASTIC OR OTHER APPROVED MATERIAL. SNOW FENCE IS NOT PERMITTED.
- 3.) CONTRACTOR SHALL MAINTAIN MARKERS AS DIRECTED BY THE RESIDENT ENGINEER.
- 4.) COST OF FURNISHING, INSTALLING AND MAINTAINING, RELOCATING AND REMOVING MARKERS SHALL BE INCIDENTAL TO THE CONTRACT.
- 5.) MARKERS SHALL BE PLACED OVER EXISTING RUNWAY NUMERALS.
- 6.) CLOSED RUNWAY MARKERS TO BE REMOVED AT THE END OF EACH WORKING DAY WHEN THE RUNWAY IS TO BE OPENED TO TRAFFIC.

REVISIONS

NUMBER	BY	DATE



UNIVERSITY OF ILLINOIS
 WILLARD AIRPORT
 REHABILITATE AIR CARRIER RAMP
 SITE PLAN

© Copyright CMT, Inc.
CMT
 CRAWFORD, MURPHY & TILLY, INC.
 CONSULTING ENGINEERS
 License No. 164-00013

DESIGN BY:	CMT
DRAWN BY:	CMT
CHECKED BY:	SMS
APPROVED BY:	KMT
DATE:	06/10/2005
JOB No:	03059-03-00
IL PROJECT:	GMI-3449
A.I.P. PROJECT:	3-17-0016-22
SHEET	3 OF 58 SHEETS

TO I-57