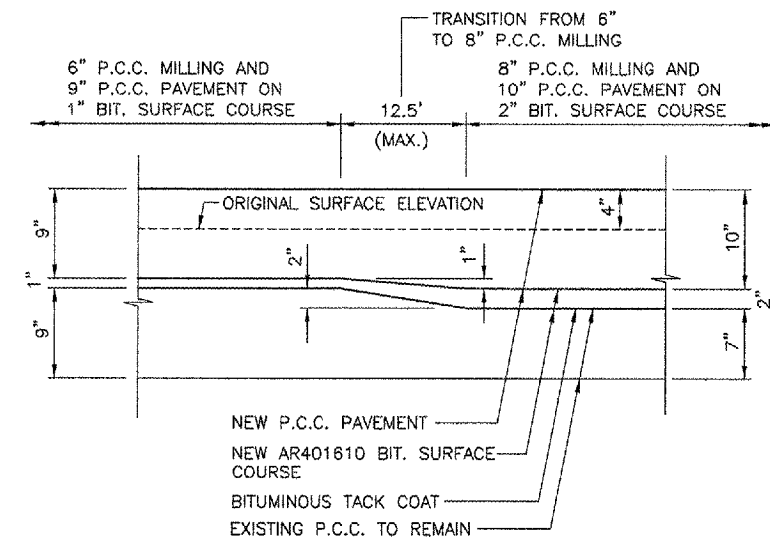
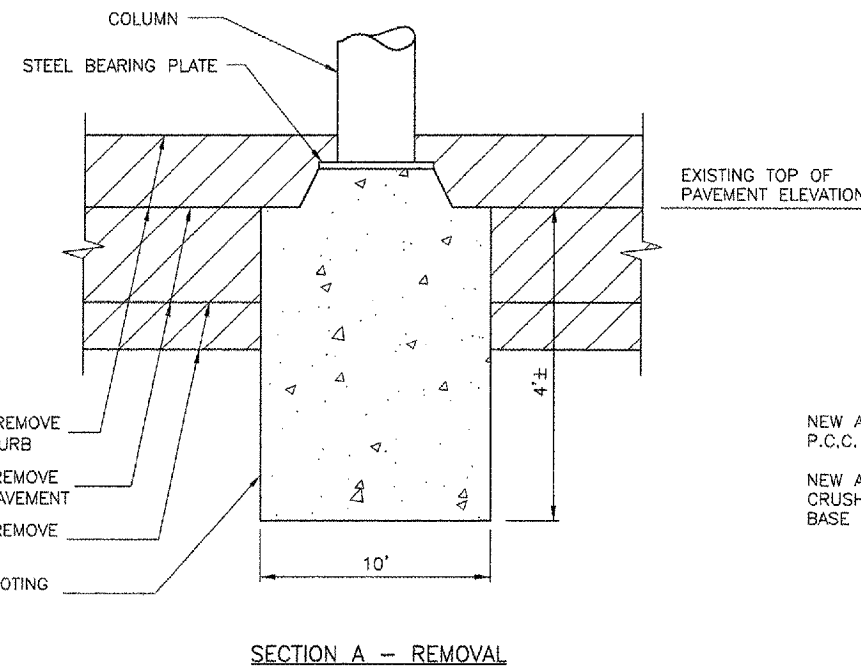
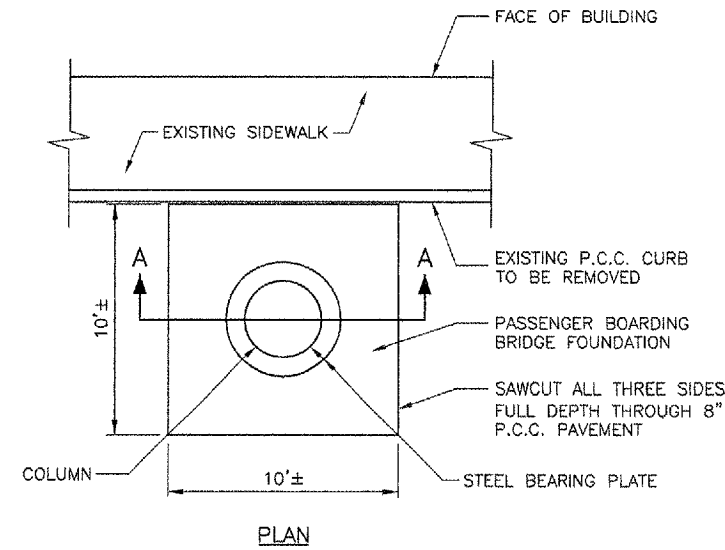


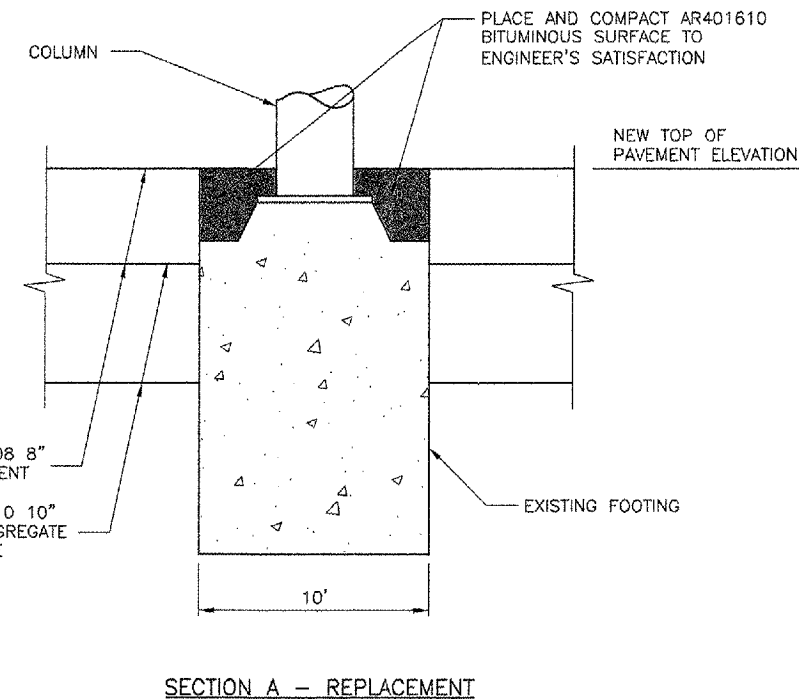
**BUTT JOINT DETAIL**  
N.T.S.



**TRANSITION FROM 6\"/>N.T.S.**



**SECTION A - REMOVAL**



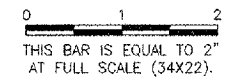
**SECTION A - REPLACEMENT**

**REMOVAL AND REPLACEMENT AT BASE OF PASSENGER BOARDING BRIDGES DETAIL**  
N.T.S.

**NOTES**

- 1.) SAWCUT FULL DEPTH THROUGH 8" P.C.C. PAVEMENT PRIOR TO BEGINNING REMOVAL OPERATIONS.
- 2.) DAMAGE TO EXISTING FOUNDATION OR BOARDING BRIDGE BY CONTRACTOR TO BE REPAIRED AT NO EXPENSE TO THE CONTRACT.
- 3.) BITUMINOUS SURFACE COURSE TO BE LEVEL WITH THE TOP OF THE STEEL PLATE, BE SLOPED TO DRAIN AWAY FROM THE COLUMN AND BE COMPACTED TO THE ENGINEER'S SATISFACTION. TO BE PAID AS AR401610 BITUMINOUS SURFACE COURSE.

REVISIONS		
NUMBER	BY	DATE



**UNIVERSITY OF ILLINOIS WILLARD AIRPORT**  
**REHABILITATE AIR CARRIER RAMP**  
**PAVING AND MISCELLANEOUS DETAILS**  
**SHEET 2**

© Copyright CMT, Inc.

**CMT**  
 CRAWFORD, MURPHY & TILLY, INC.  
 CONSULTING ENGINEERS  
 License No. 184-000613

DESIGN BY:	SMS
DRAWN BY:	CMT
CHECKED BY:	SMS
APPROVED BY:	<i>[Signature]</i>
DATE:	06/10/2005
JOB No:	03059-03-00

IL PROJECT: CM-3449  
 A.I.P. PROJECT: 3-17-0016-22