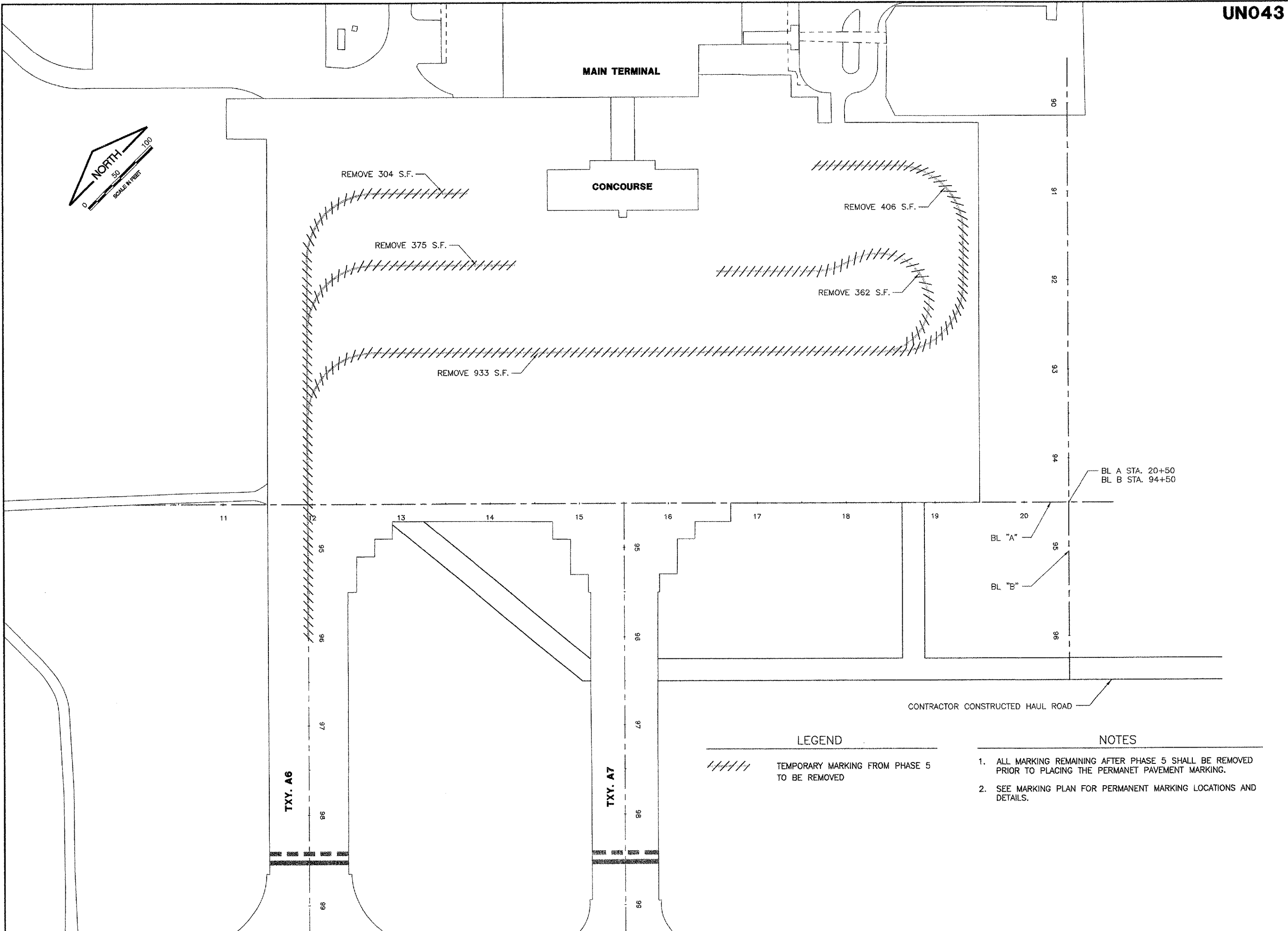
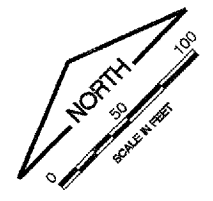
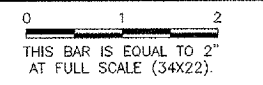


UN043

K:\Champaign\0305803\draw\sheet\FILE: 47_TempMk-RemPlan.dwg
 LAYOUT: Layout1
 UPDATE BY: odraughan
 SURVEY BOOK #
 DATE: Thu 6/16/05 2:41pm
 XREF DWG: CMIBaseEPOEL.dwg
 CntInfo.dwg
 tb.dwg
 baselines.dwg



REVISIONS		
NUMBER	BY	DATE



**UNIVERSITY OF ILLINOIS
 WILLARD AIRPORT**

REHABILITATE AIR CARRIER RAMP

TEMPORARY MARKING REMOVAL PLAN

© Copyright CMT, Inc.
CMT
 CRANFORD, HARBRY & TILLY, INC.
 CONSULTING ENGINEERS
 License No. 184-000618

LEGEND

////// TEMPORARY MARKING FROM PHASE 5 TO BE REMOVED

NOTES

1. ALL MARKING REMAINING AFTER PHASE 5 SHALL BE REMOVED PRIOR TO PLACING THE PERMANENT PAVEMENT MARKING.
2. SEE MARKING PLAN FOR PERMANENT MARKING LOCATIONS AND DETAILS.

DESIGN BY:	CMT
DRAWN BY:	CMT
CHECKED BY:	SMS
APPROVED BY:	<i>[Signature]</i>
DATE:	06/10/2005
JOB No:	03058-03-00
IL PROJECT:	CMI-3449
A.I.P. PROJECT:	3-17-0016-22
SHEET	47 OF 58 SHEETS