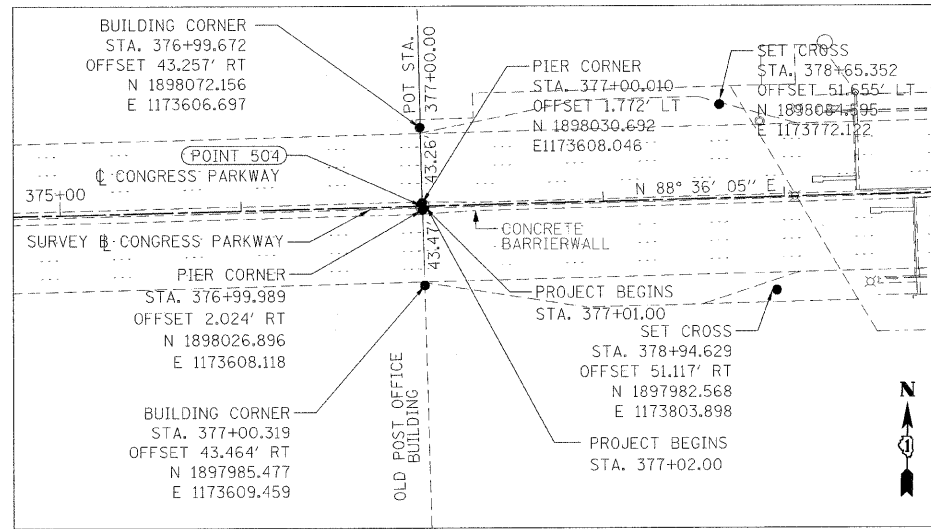
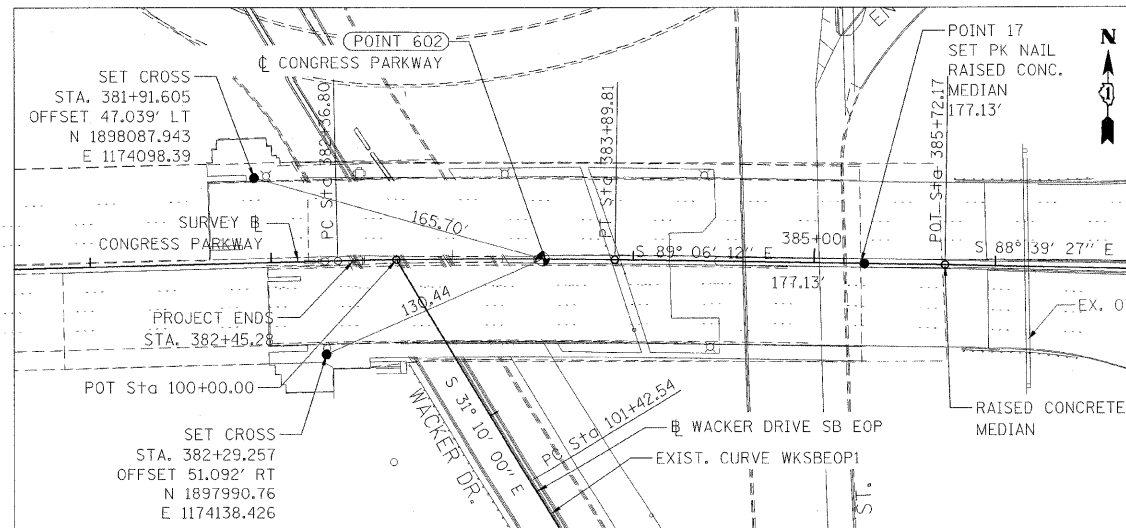


POINT 600



POINT 504



POINT 602

PB Americas, Inc.
 230 WEST MONROE STREET,
 SUITE 900
 CHICAGO, IL. 60606

USER NAME = #USER#
 FILE NAME = #FILENAME#
 PLOT SCALE =
 PLOT DATE = 5/7/2009

DESIGNED - DM
 DRAWN - MS
 CHECKED - DS
 DATE - 5/08/09

REVISED -
 REVISED -
 REVISED -
 REVISED -

**STATE OF ILLINOIS
 DEPARTMENT OF TRANSPORTATION**

**CONGRESS PARKWAY OVER SOUTH BRANCH OF THE CHICAGO RIVER
 ALIGNMENT, TIES AND BENCHMARKS**

SCALE: 1" = 50' SHEET NO. 22 OF 83 SHEETS STA. 377+01.00 TO STA. 382+45.28

F.A.P. RTE.	SECTION	COUNTY	TOTAL SHEETS	SHEET NO.
389	2424-2B-R	COOK	398	22
CONTRACT NO. 60D61				
FED. ROAD DIST. NO. 1 ILLINOIS FED. AID PROJECT				