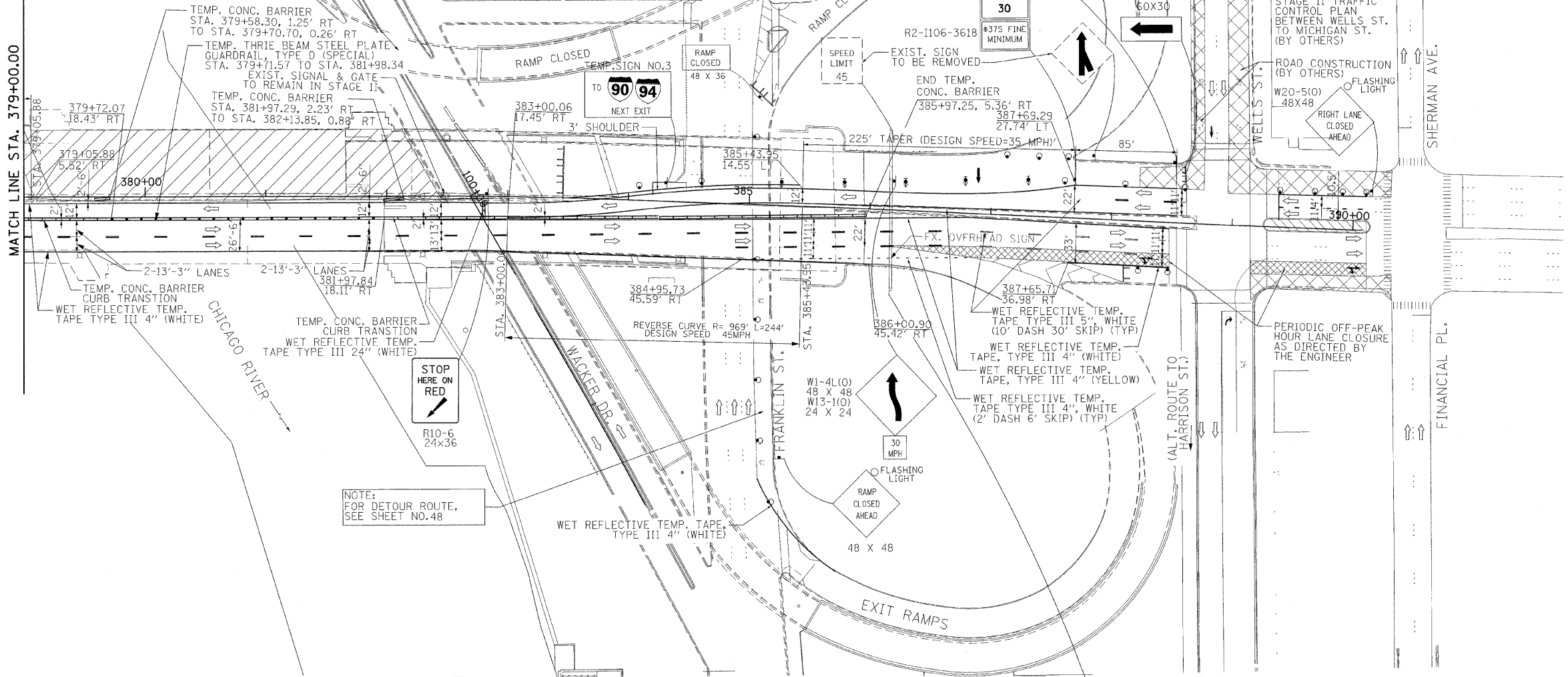
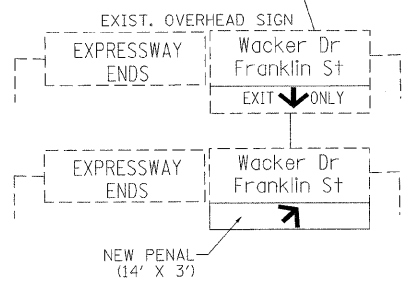




NOTE:  
FOR RAMP CLOSURE, SEE SHEET NO.46  
FOR DETOUR ROUTE, SEE SHEET NO.49



NOTE:  
FOR DETOUR ROUTE,  
SEE SHEET NO.48



**PB Americas, Inc.**  
230 WEST MONROE STREET,  
SUITE 900  
CHICAGO, IL. 60606

USER NAME = #USER#	DESIGNED - DM	REVISED -
FILE NAME = #FILENAME#	DRAWN - MS	REVISED -
PLOT SCALE = #SCALE#	CHECKED - DS	REVISED -
PLOT DATE = 5/7/2009	DATE - 5/08/09	REVISED -

**STATE OF ILLINOIS  
DEPARTMENT OF TRANSPORTATION**

**CONGRESS PARKWAY OVER SOUTH BRANCH OF THE CHICAGO RIVER  
SUGGESTED STAGES OF CONSTRUCTION  
AND TRAFFIC CONTROL PLANS - STAGE II**  
SCALE: 1" = 50' SHEET NO. 42 OF 83 SHEETS STA. 377+01.00 TO STA. 382+45.28

F.A.P. RTE.	SECTION	COUNTY	TOTAL SHEETS	SHEET NO.
389	2424-2B-R	COOK	398	42
FED. ROAD DIST. NO. 1 ILLINOIS FED. AID PROJECT			CONTRACT NO. 60D61	