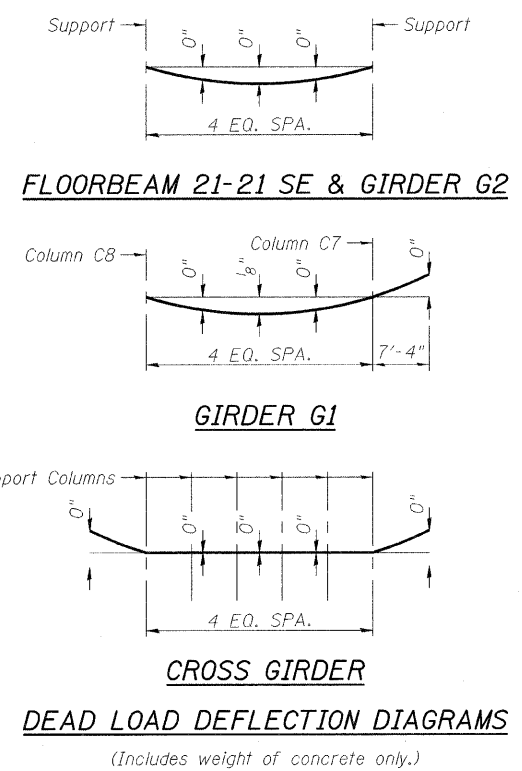
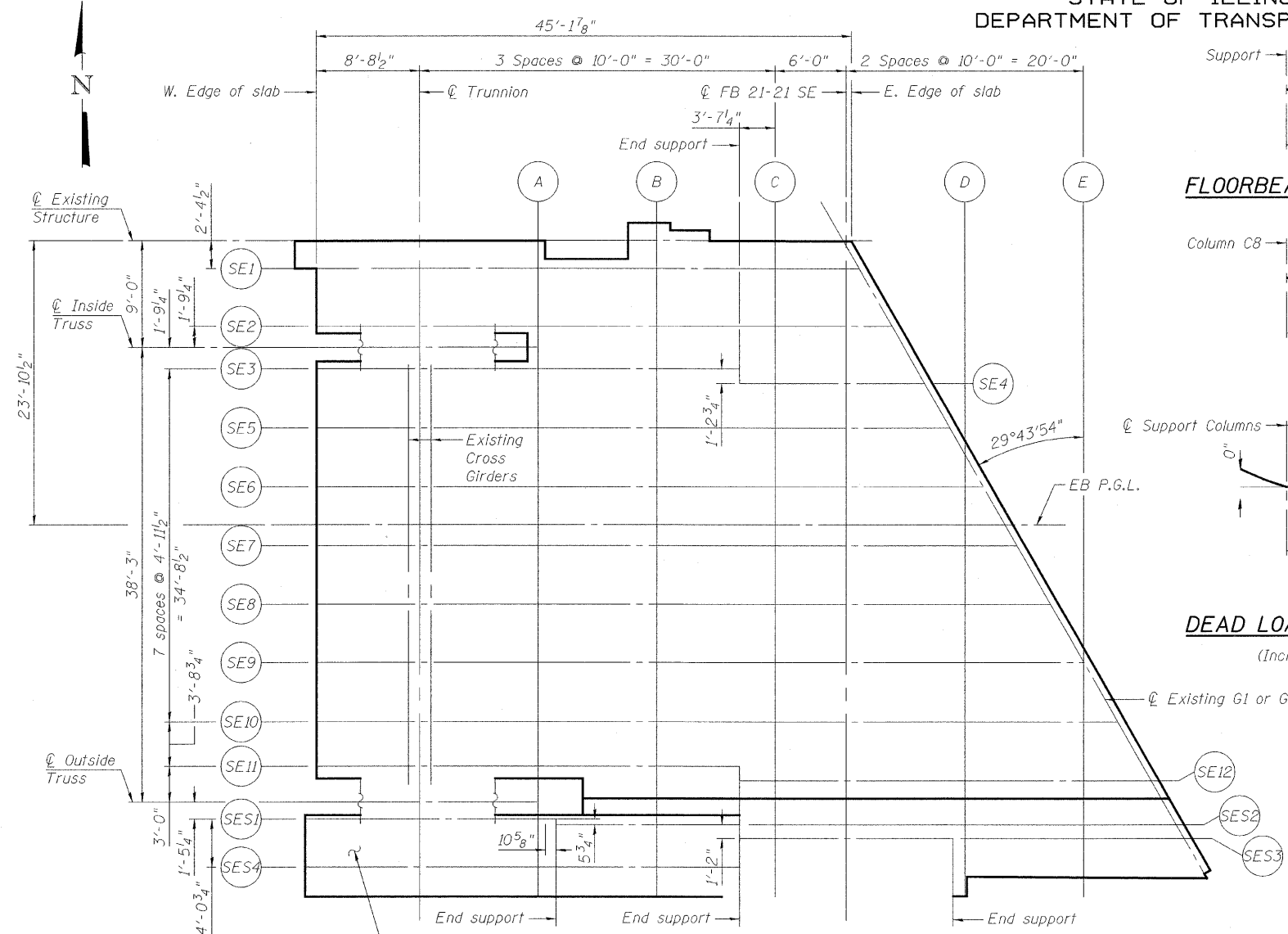


STATE OF ILLINOIS
DEPARTMENT OF TRANSPORTATION



DEAD LOAD DEFLECTION DIAGRAMS
(Includes weight of concrete only.)

STRINGER SE2

Location	Station	Offset	Theoretical Grade Elevations	Theoretical Grade Elevations Adjusted For Dead Load Deflection
W. Edge of slab	381+98.58	7.47	32.12	32.12
@ Trunnion	382+07.28	7.46	32.03	32.03
A	382+17.28	7.44	31.92	31.92
B	382+27.28	7.43	31.81	31.81
C	382+37.28	7.41	31.69	31.69
@ FB 21-21	382+43.29	7.40	31.62	31.62
@ Existing G2	382+47.18	7.39	31.58	31.58
E. Edge of slab	382+47.85	7.38	31.57	31.57

STRINGER SE3

Location	Station	Offset	Theoretical Grade Elevations	Theoretical Grade Elevations Adjusted For Dead Load Deflection
W. Edge of slab	381+98.58	11.01	32.13	32.13
@ Trunnion	382+07.29	11.00	32.04	32.04
A	382+17.29	10.98	31.93	31.93
B	382+27.29	10.97	31.83	31.83
End Support	382+34.29	10.96	31.76	31.76

STRINGER SE4

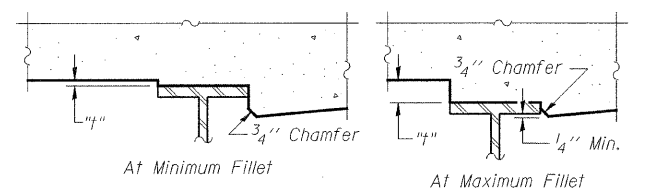
Location	Station	Offset	Theoretical Grade Elevations	Theoretical Grade Elevations Adjusted For Dead Load Deflection
End support	382+34.29	12.19	31.76	31.76
C	382+37.29	12.19	31.73	31.73
@ FB 21-21	382+43.31	12.17	31.66	31.66
@ Existing G2	382+49.93	12.15	31.57	31.57
E. Edge of slab	382+50.61	12.14	31.56	31.56

STRINGER SE5

Location	Station	Offset	Theoretical Grade Elevations	Theoretical Grade Elevations Adjusted For Dead Load Deflection
W. Edge of slab	381+98.59	15.97	32.13	32.13
@ Trunnion	382+07.29	15.96	32.04	32.04
A	382+17.29	15.94	31.94	31.94
B	382+27.29	15.93	31.84	31.84
C	382+37.30	15.91	31.73	31.73
@ FB 21-21	382+43.32	15.90	31.67	31.67
@ Existing G2	382+52.09	15.86	31.57	31.57
E. Edge of slab	382+52.77	15.86	31.56	31.56

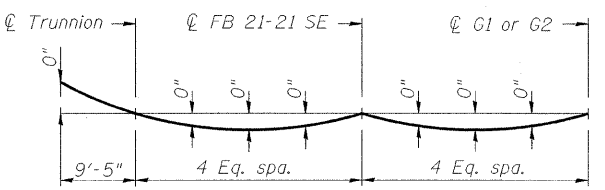
STRINGER SE1

Location	Station	Offset	Theoretical Grade Elevations	Theoretical Grade Elevations Adjusted For Dead Load Deflection
W. Edge of slab	381+97.88	2.61	32.10	32.10
@ Trunnion	382+07.27	2.60	32.00	32.00
A	382+17.27	2.59	31.88	31.88
B	382+27.27	2.57	31.77	31.77
C	382+37.27	2.56	31.65	31.65
@ FB 21-21	382+43.28	2.55	31.58	31.58
@ Existing G2	382+44.39	2.54	31.57	31.57
E. Edge of slab	382+45.06	2.54	31.56	31.56



To determine "f": After all structural steel has been erected, elevations of the top flanges of the beams shall be taken at intervals shown above. These elevations subtracted from the "Theoretical Grade Elevations Adjusted for Dead Load Deflection" shown in the tables, minus slab thickness, equals the fillet heights "f" above top flange of beams.

FILLET HEIGHTS



TYP. STRINGERS
DEAD LOAD DEFLECTION DIAGRAM
(Includes weight of concrete only.)

Note:
The above deflections are not to be used in the field if the engineer is working from the theoretical grade elevations adjusted for dead load deflections as shown on the right and on sheet 13 of 163.

DESIGNED	A. HAMMAD
CHECKED	P. LOPEZ
DRAWN	D. C. PATEL
CHECKED	J. GRAINAWI

TOP OF SLAB ELEVATIONS
SOUTHEAST FIXED SPANS
STRUCTURE NO. 016-2445

SHEET NO. 12	F.A.P RTE.	SECTION	COUNTY	TOTAL SHEETS	SHEET NO.
	389	2424.2B-R	COOK	398	93
163 SHEETS			CONTRACT NO. 60D61		
FED. ROAD DIST. NO. 7 ILLINOIS FED. AID PROJECT					

PB Americas, Inc.
230 WEST MONROE STREET,
SUITE 900
CHICAGO, IL. 60606

T:\16845A\Structural\Cadd\Pre-final\EB_Plans\0162445-60D61-TSE-012.dgn 07-MAY-2009