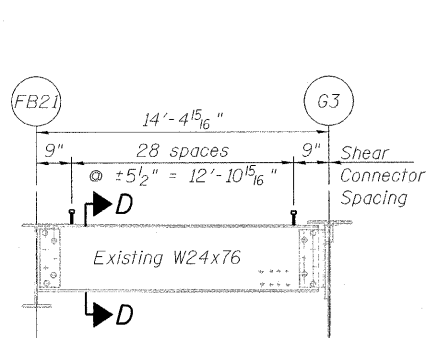
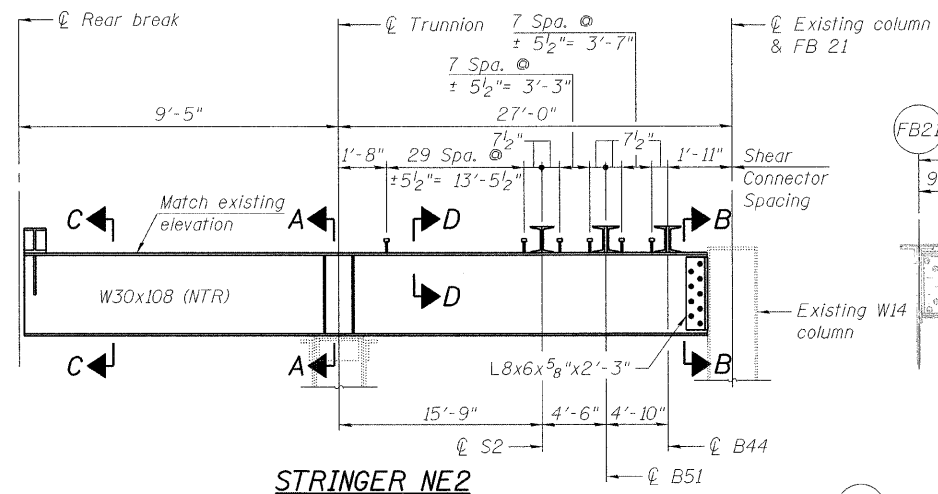


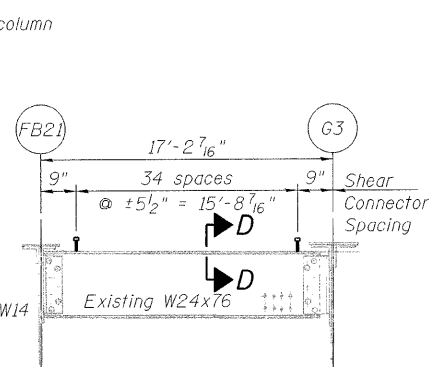
STATE OF ILLINOIS
DEPARTMENT OF TRANSPORTATION



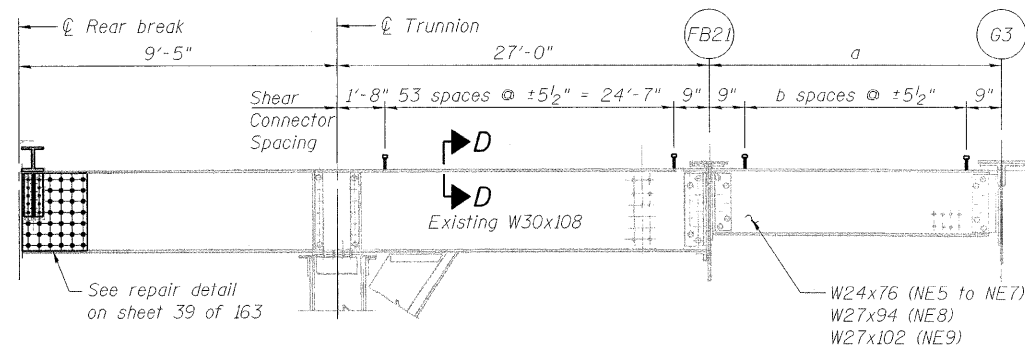
STRINGER NE1



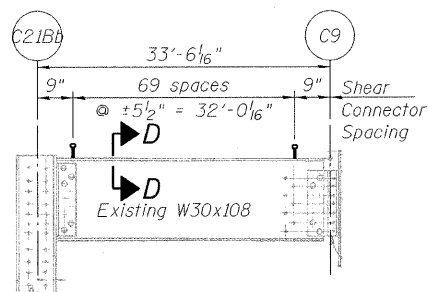
STRINGER NE2



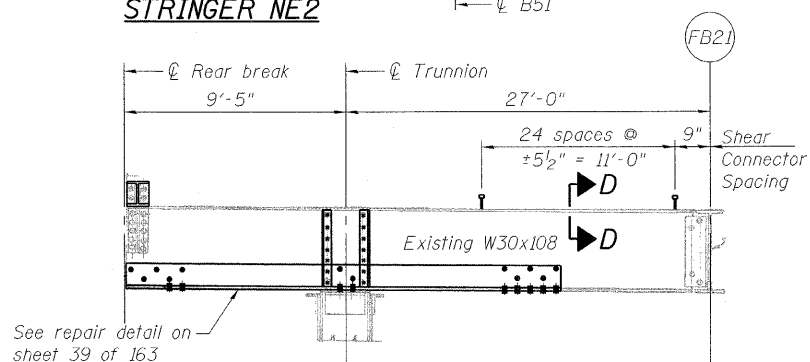
STRINGER NE3



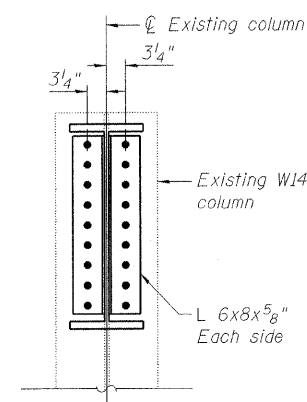
STRINGER NE4 TO NE9



STRINGER NE10



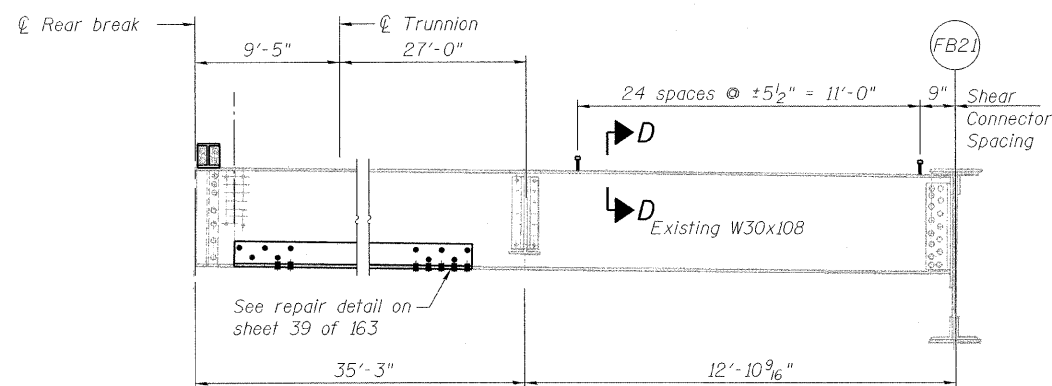
STRINGER NE11



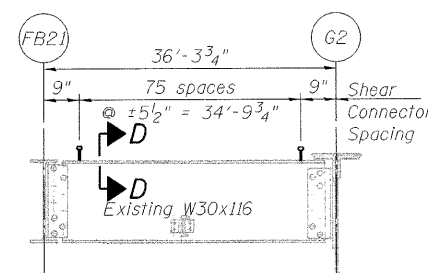
SECTION B-B

Beam Length and
Shear Connector Spacing

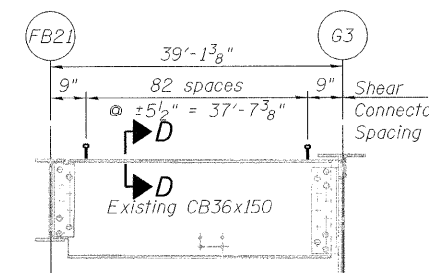
Stringer	a	b
NE4	0	0
NE5	20'-0 5/8"	40
NE6	22'-10 1/2"	46
NE7	25'-8 9/16"	52
NE8	28'-6 9/16"	58
NE9	31'-4 1/2"	65



STRINGER NE12



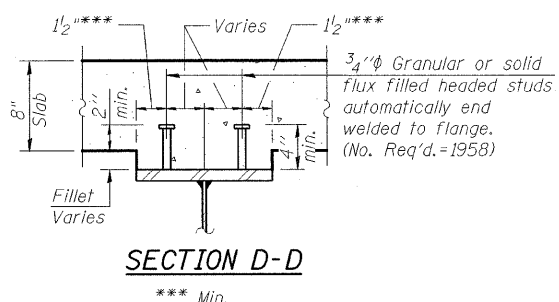
STRINGER NE13



STRINGER NE14

LEGEND

- Existing fastener to remain
- Hole to match existing location
- New hole
- Existing member to remain
- New member



SECTION D-D

**** Min.

Notes:
Portions of this drawing are extracted from original drawings for this bridge. Details shown are provided to illustrate the work to be performed.
Load carrying components designated "NTR" shall conform to the supplemental requirements for Notch Toughness, Zone 2.
For Section A-A, see sheet 39 of 163.

DESIGNED	A. HAMMAD
CHECKED	J. GRAINAWI
DRAWN	D. C. PATEL
CHECKED	A. HAMMAD

PB Americas, Inc.
230 WEST MONROE STREET,
SUITE 900
CHICAGO, IL. 60606

SHEET NO. 37	F.A.P. RTE. 389	SECTION 2424.2B-R	COUNTY COOK	TOTAL SHEETS 398	SHEET NO. 118
163 SHEETS		CONTRACT NO. 60D61		FED. ROAD DIST. NO. 7 ILLINOIS FED. AID PROJECT	

FRAMING DETAILS
NORTHEAST FIXED SPANS
STRUCTURE NO. 016-2445