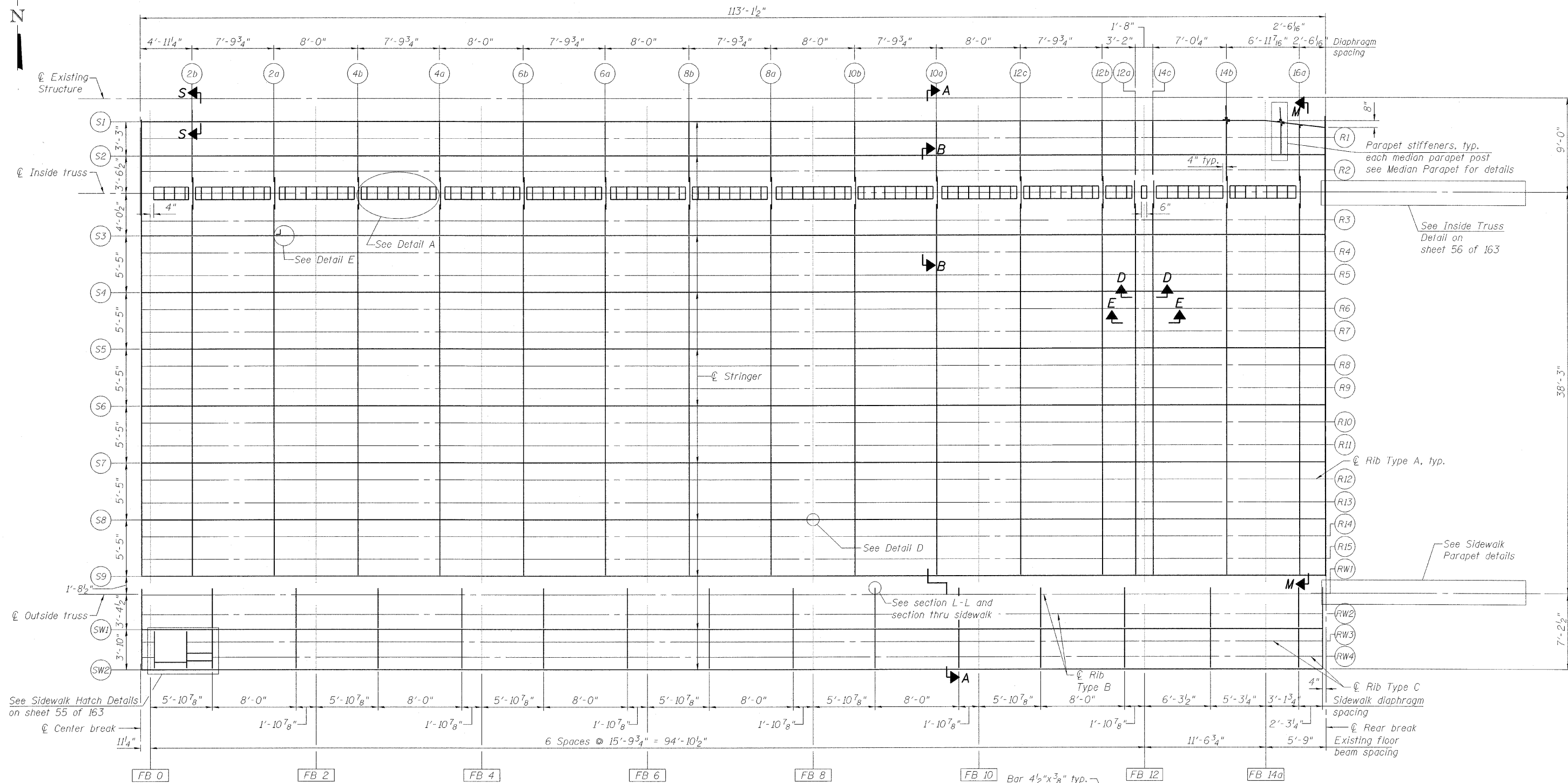
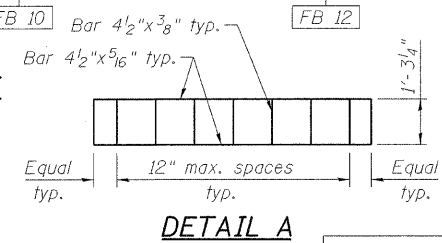


STATE OF ILLINOIS  
DEPARTMENT OF TRANSPORTATION



**ORTHOTROPIC FRAMING PLAN SOUTHEAST LEAF**  
(Stiffeners and Parapet bracing not shown for clarity)



**DETAIL A**

**DECK FRAMING PLAN  
SOUTHEAST MOVABLE SPAN  
STRUCTURE NO. 016-2445**

DESIGNED	P. PILARSKI
CHECKED	J. GRAINAWI
DRAWN	D. C. PATEL
CHECKED	A. HAMMAD

**LEGEND**

- Existing member
- New member

Notes:  
Dimension to diaphragms are to back of channel or back face of plate diaphragm.  
For Section A-A & B-B see sheet 48 of 163.  
For Sections D-D & E-E and Detail D see sheet 53 of 163.  
For detail E and Section S-S see sheet 54 of 163.  
For Section M-M see sheet 59 of 163.

**PB Americas, Inc.**  
230 WEST MONROE STREET,  
SUITE 900  
CHICAGO, IL. 60606

SHEET NO. 50 163 SHEETS	F.A.P RTE.	SECTION	COUNTY	TOTAL SHEETS	SHEET NO.
	389	2424.2B-R	COOK	398	131
			CONTRACT NO. 60D61		
FED. ROAD DIST. NO. 7 ILLINOIS FED. AID PROJECT					

T:\16843A\Structural\Cadd\Pre-final\EB\_Plans\0162445-60D61\_SUP-060.dgn 07-MAY-2008