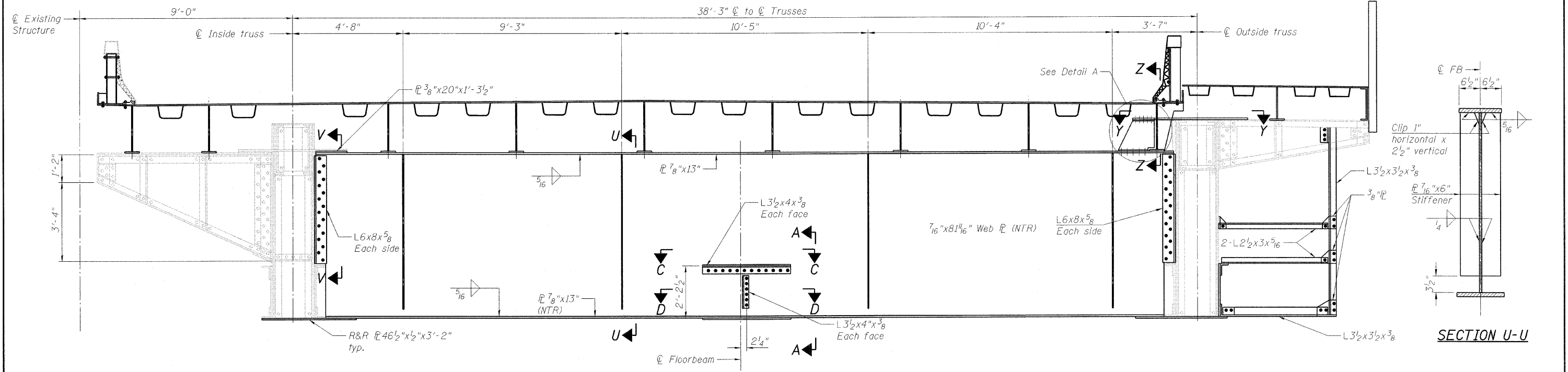
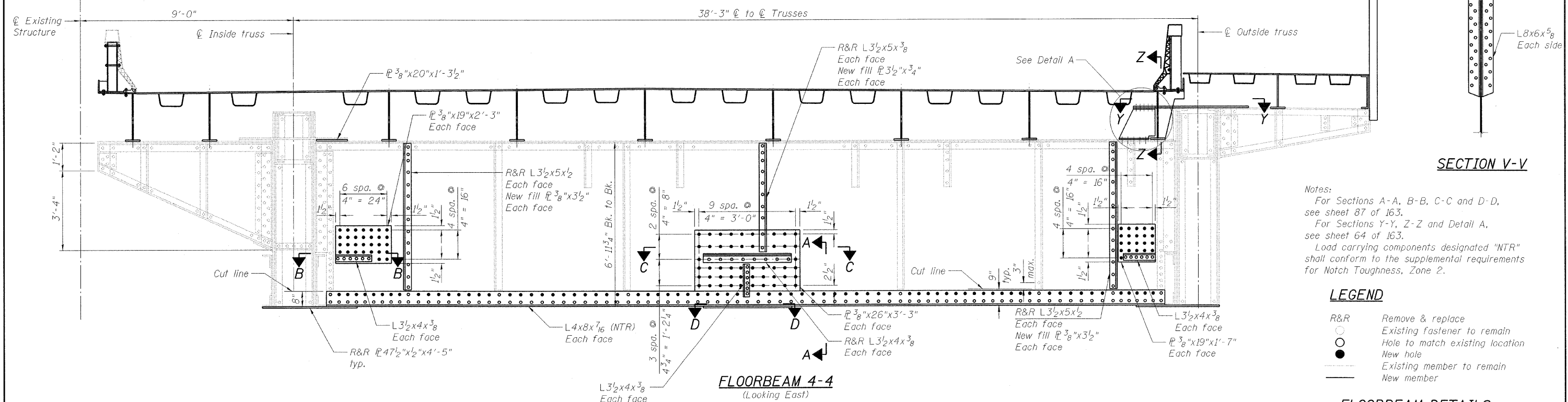


STATE OF ILLINOIS
DEPARTMENT OF TRANSPORTATION



FLOORBEAM 2-2
(Looking East)



FLOORBEAM 4-4
(Looking East)

Notes:
For Sections A-A, B-B, C-C and D-D, see sheet 87 of 163.
For Sections Y-Y, Z-Z and Detail A, see sheet 64 of 163.
Load carrying components designated "NTR" shall conform to the supplemental requirements for Notch Toughness, Zone 2.

LEGEND

R&R	Remove & replace
○	Existing fastener to remain
○	Hole to match existing location
●	New hole
---	Existing member to remain
---	New member

FLOORBEAM DETAILS
SOUTHWEST LEAF
STRUCTURE NO. 016-2445

DESIGNED	D. V. PATEL
CHECKED	J. GRAINAWI
DRAWN	D. C. PATEL
CHECKED	A. HAMMAD

SHEET NO. 62 163 SHEETS	F.A.P RTE.	SECTION	COUNTY	TOTAL SHEETS	SHEET NO.
	389	2424.2B-R	COOK	398	143
PB Americas, Inc. 230 WEST MONROE STREET, SUITE 900 CHICAGO, IL. 60606			CONTRACT NO. 60D61		
FED. ROAD DIST. NO. 7 ILLINOIS FED. AID PROJECT					

T:\1684\Structural\Cadd\Pre-final\EB_Plans\0162445-60D61-FBE-060.dgn
07-MAY-2009