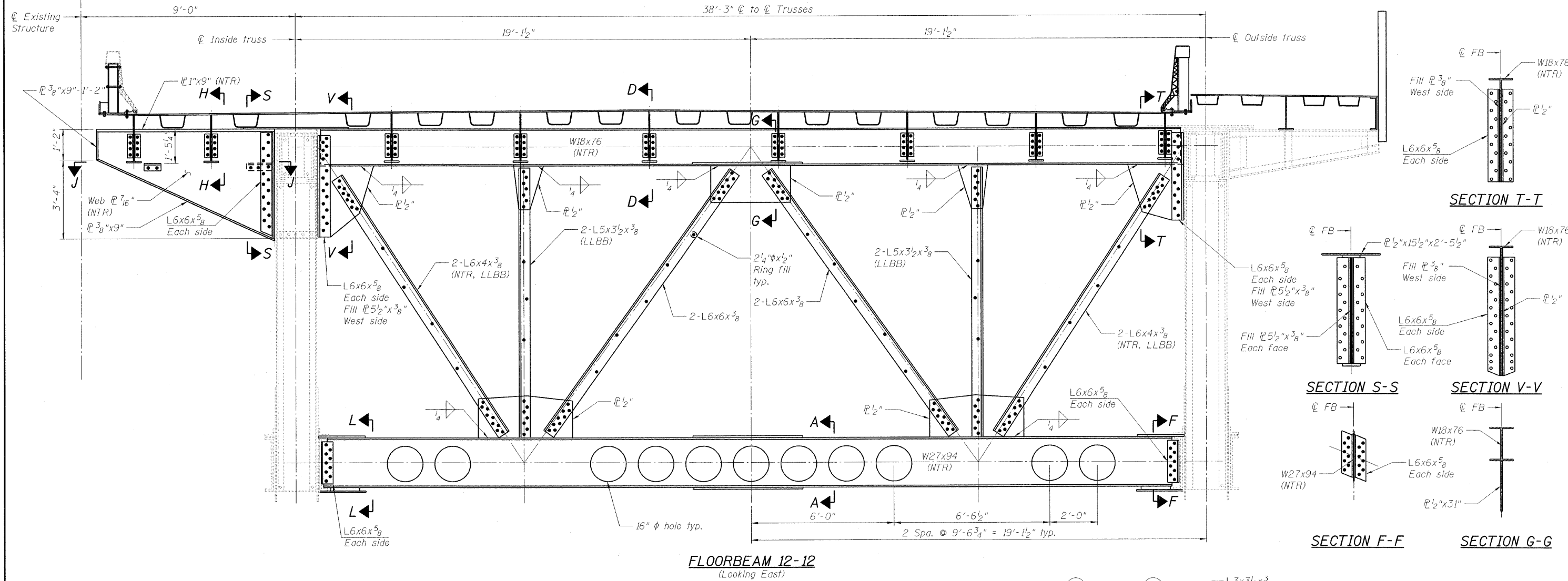
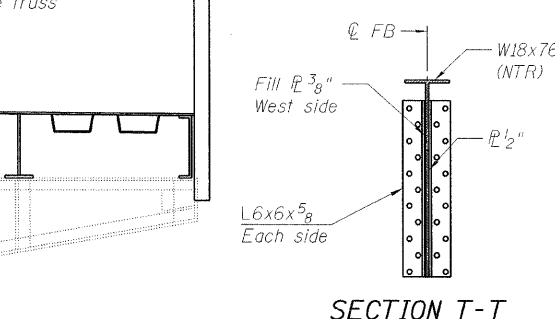


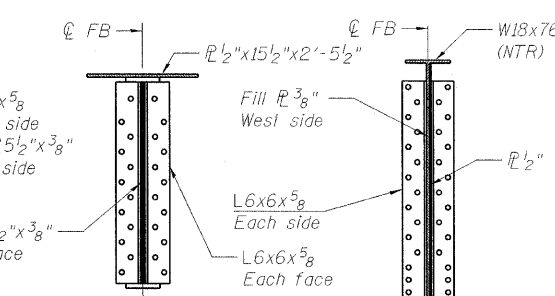
STATE OF ILLINOIS
DEPARTMENT OF TRANSPORTATION



FLOORBEAM 12-12
(Looking East)

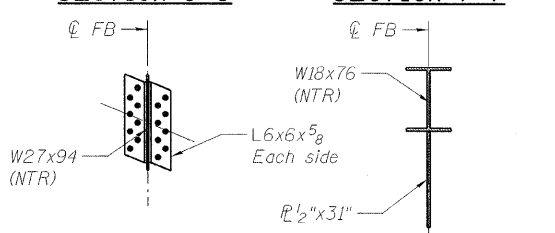


SECTION T-T



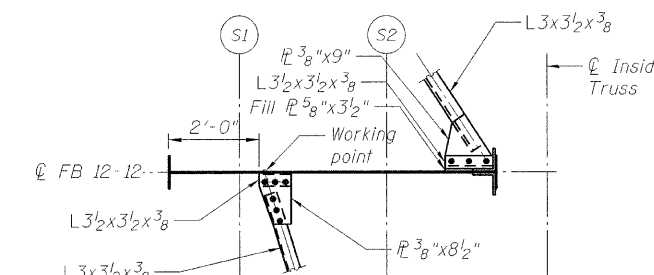
SECTION S-S

SECTION V-V



SECTION F-F

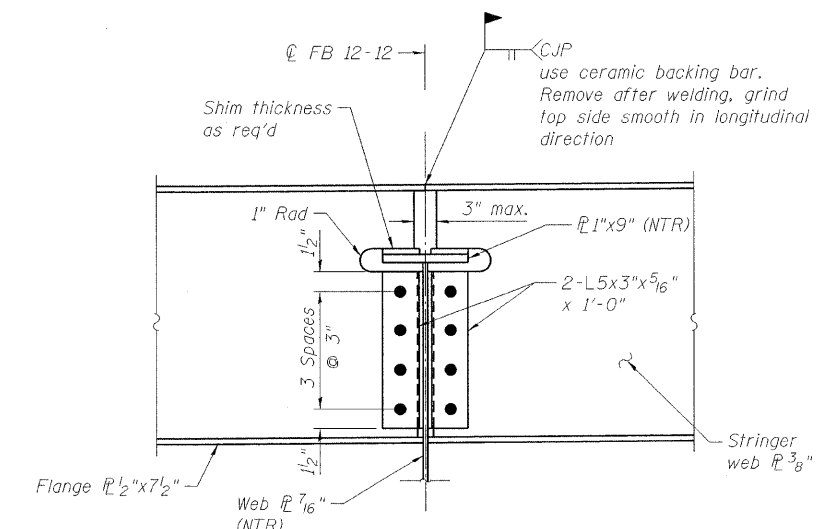
SECTION G-G



SECTION J-J

Notes:
For Sections A-A and L-L, see sheet 87 of 163.
For Sections D-D, see sheet 53 of 163.
Load carrying components designated "NTR" shall conform to the supplemental requirements for Notch Toughness, Zone 2.

LEGEND
R&R Remove & replace
○ Existing fastener to remain
○ Hole to match existing location
● New hole
— Existing member to remain
— New member



SECTION H-H

DESIGNED	B. GILHOUSEN
CHECKED	J. GRAINAWI
DRAWN	D. C. PATEL
CHECKED	A. HAMMAD

PB Americas, Inc. 230 WEST MONROE STREET, SUITE 900 CHICAGO, IL. 60606	SHEET NO. 71	F.A.P RTE.	SECTION	COUNTY	TOTAL SHEETS	SHEET NO.
	163 SHEETS	389	2424.2B-R	COOK	398	152
				CONTRACT NO. 60D61		
				FED. ROAD DIST. NO. 7 ILLINOIS FED. AID PROJECT		

FLOORBEAM DETAILS
SOUTHEAST LEAF
STRUCTURE NO. 016-2445

T:\16843A\Structural\CadalPre-final\EB_Plans\0162445-60D61-071-FBE.dgn 17-JUN-2009 18:10