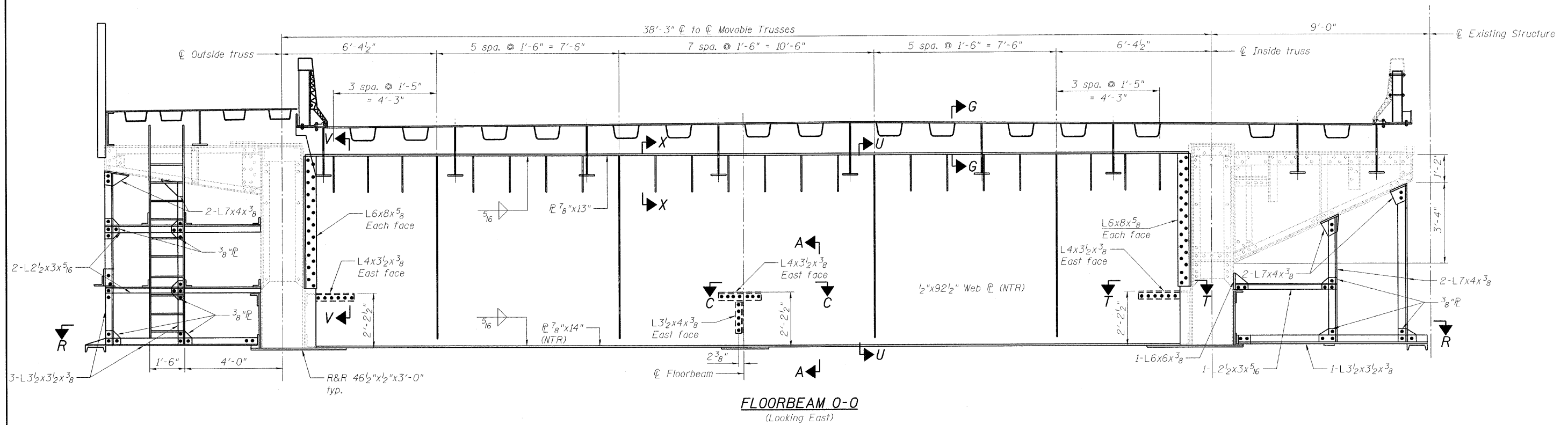
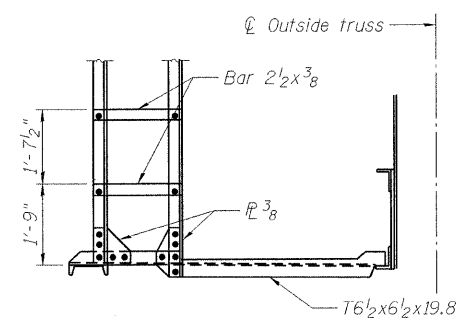


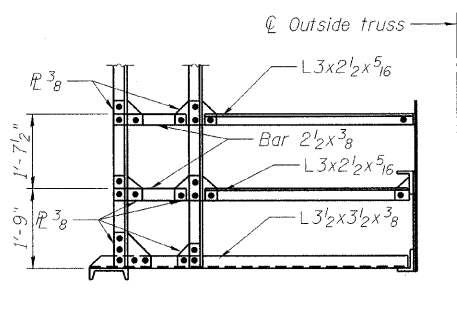
STATE OF ILLINOIS  
DEPARTMENT OF TRANSPORTATION



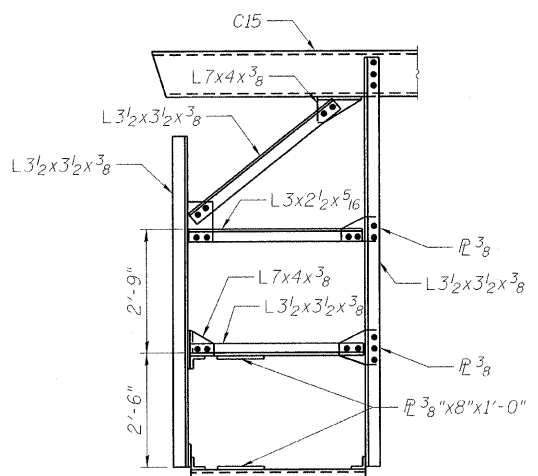
**FLOORBEAM 0-0**  
(Looking East)



**SECTION M-M**  
(NW and SW Leaves)



**SECTION M-M**  
(NE and SE Leaves)



**SECTION N-N**

Notes:  
For Section G-G, see sheet 58 of 163.  
For Section U-U, V-V and X-X, see sheet 61 of 163.  
For Sections A-A, C-C and T-T, see sheet 88 of 163.  
For Section R-R, see sheet 61 of 163.  
Load carrying components designated "NTR" shall conform to the supplemental requirements for Notch Toughness, Zone 2.

**LEGEND**

- R&R Remove & replace
- Existing fastener to remain
- Hole to match existing location
- New hole
- Existing member to remain
- New member

**FLOORBEAM DETAILS  
NORTHEAST LEAF  
STRUCTURE NO. 016-2445**

DESIGNED	D. V. PATEL
CHECKED	J. GRAINAWI
DRAWN	D. C. PATEL
CHECKED	A. HAMMAD

SHEET NO. 73 163 SHEETS	F.A.P. RTE.	SECTION	COUNTY	TOTAL SHEETS	SHEET NO.
	389	2424.2B-R	COOK	398	154
PB Americas, Inc. 230 WEST MONROE STREET, SUITE 900 CHICAGO, IL. 60606			CONTRACT NO. 60D61		
FED. ROAD DIST. NO. 7 ILLINOIS FED. AID PROJECT					

T:\16843A\Structural\Cadd\Pre-final\EB\_Plans\0162445-60D61-073-FBE.dgn 17-JUN-2009 17:53