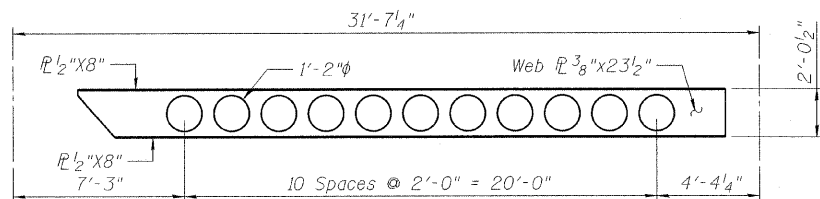
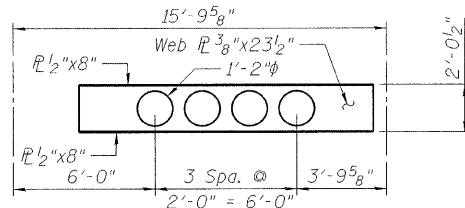


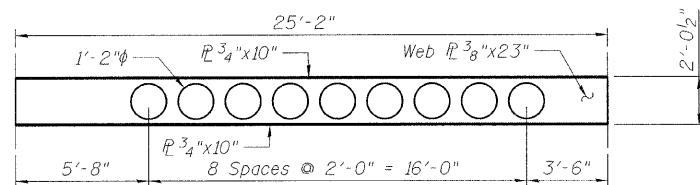
STATE OF ILLINOIS  
DEPARTMENT OF TRANSPORTATION



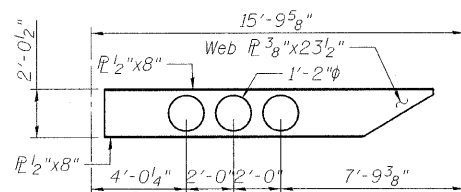
**BL1**



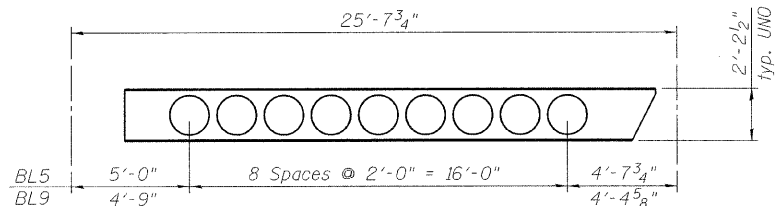
**BL2**



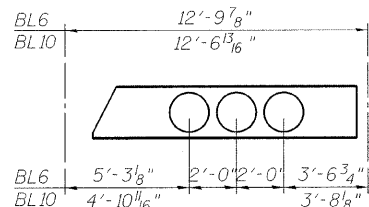
**BL3**



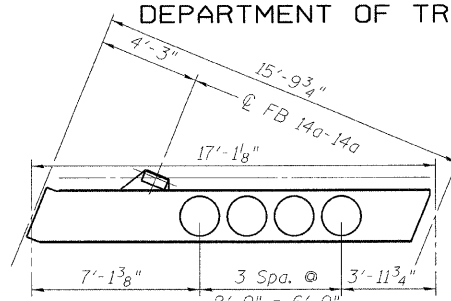
**BL4**



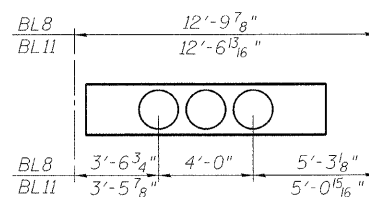
**BL5 & BL9**



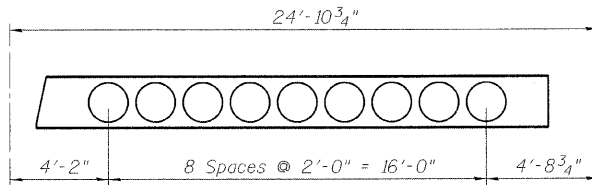
**BL6 & BL10**



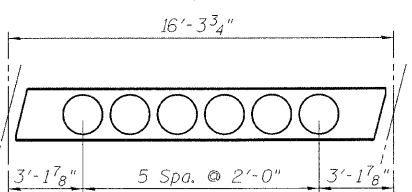
**BL7**



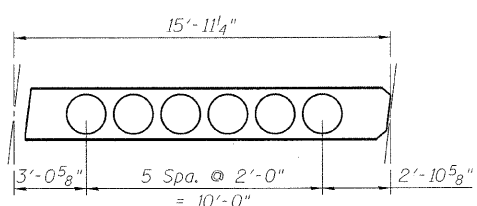
**BL8 & BL11**



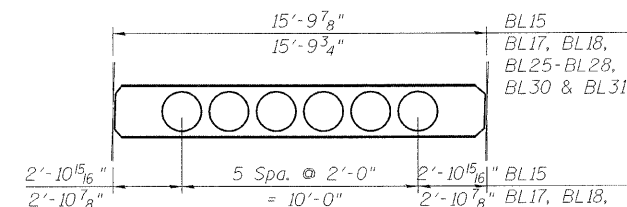
**BL14**



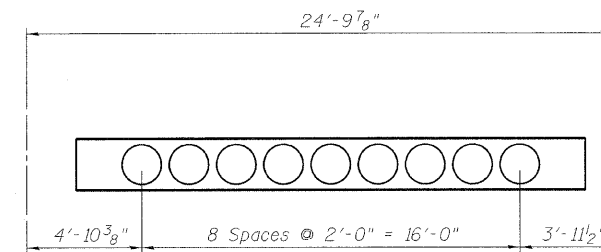
**BL12**



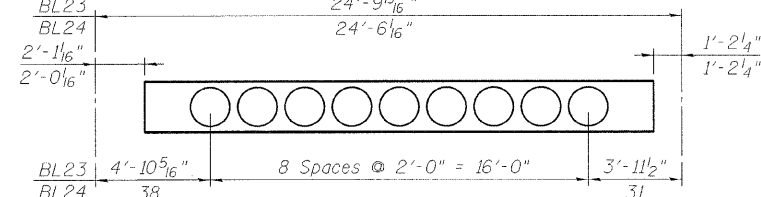
**BL13**



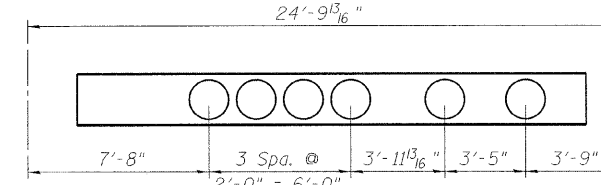
**BL15, BL17, BL18, BL25-BL28, BL30 & BL31**



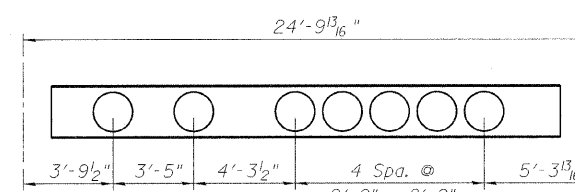
**BL16**



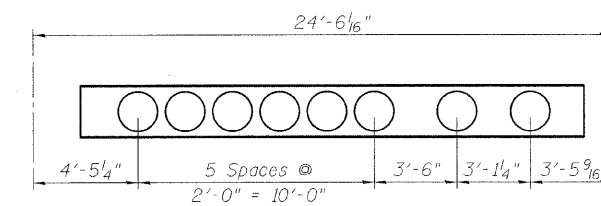
**BL23 & BL24**



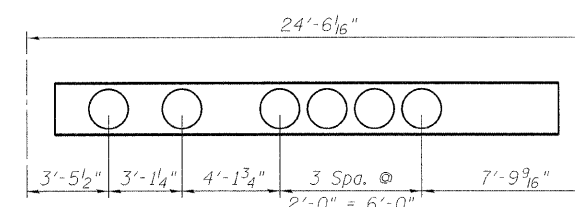
**BL19**



**BL20**



**BL21**



**BL22**

Note:  
Use 1/4" weld for flange to web connections typical all bottom lateral.  
All panel to panel lengths of lateral bracing shown are based on existing shop drawings. Overall length of lateral bracing shall match existing lateral bracing. Contractor shall verify prior to order of material and fabrication.  
All dimensions shall be as follows unless noted otherwise:  
Web R 3/8" x 25 1/2"  
Top Flange R 1/2" x 8"  
Bottom Flange R 1/2" x 8"  
Hole diameter: 1'-4"

DESIGNED	P. PETERSON
CHECKED	J. GRAINAWI
DRAWN	D. C. PATEL
CHECKED	A. HAMMAD

LATERAL BRACING DETAILS  
MOVABLE SPAN  
STRUCTURE NO. 016-2445

PB Americas, Inc. 230 WEST MONROE STREET, SUITE 900 CHICAGO, IL. 60606	SHEET NO. 86	F.A.P RTE.	SECTION	COUNTY	TOTAL SHEETS	SHEET NO.
	163 SHEETS	389	2424.2B-R	COOK	398	167
		FED. ROAD DIST. NO. 7		ILLINOIS		FED. AID PROJECT
				CONTRACT NO.		60D61