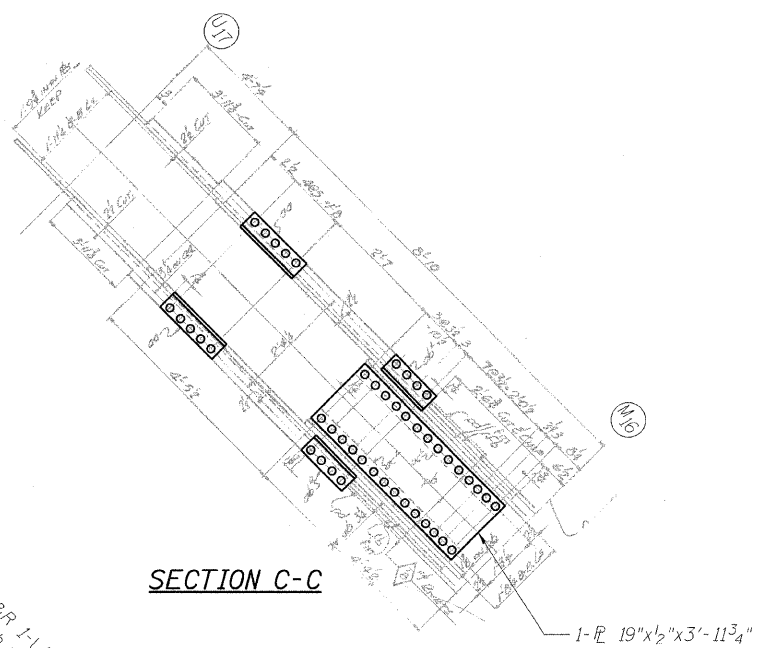
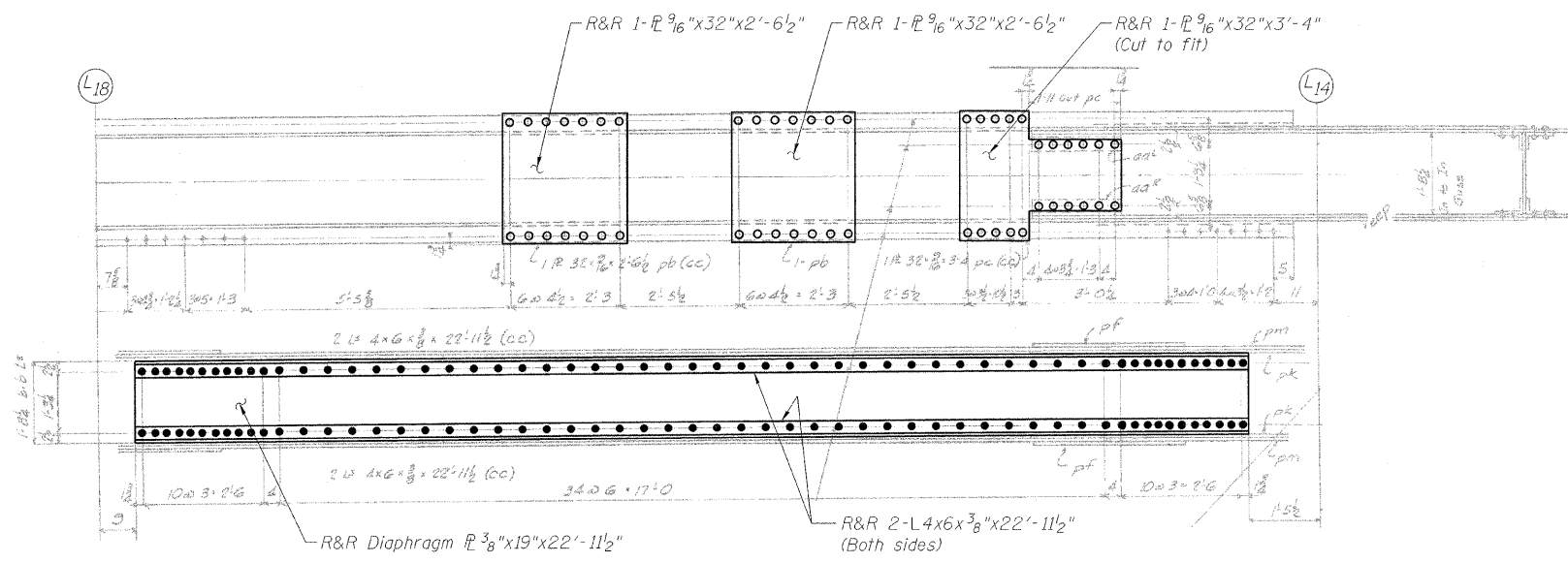


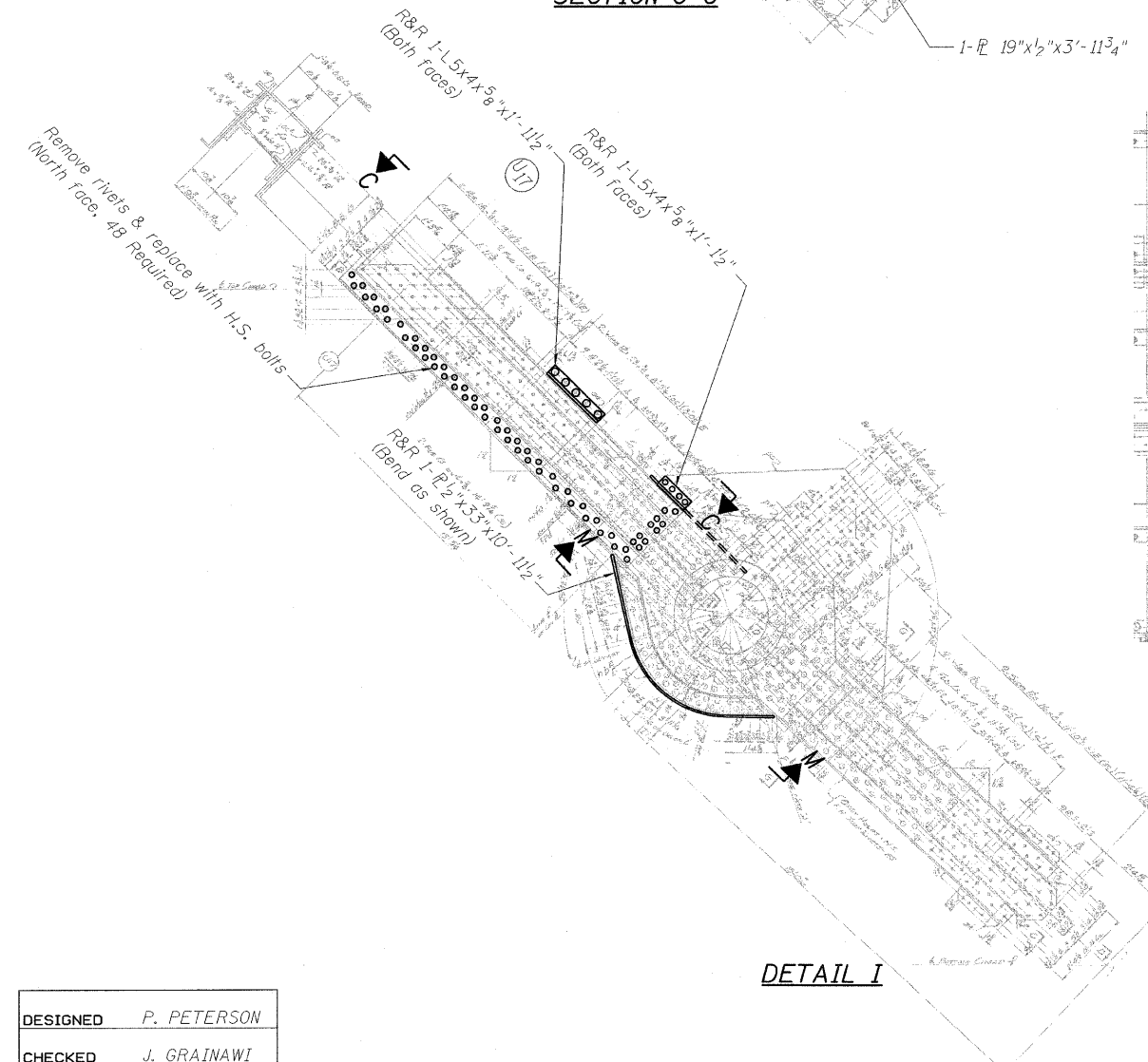
STATE OF ILLINOIS  
DEPARTMENT OF TRANSPORTATION



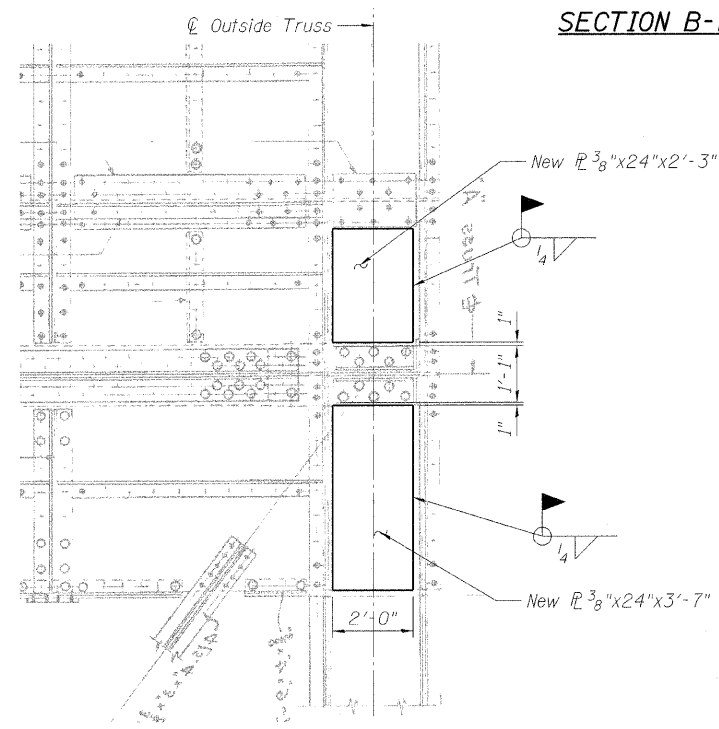
SECTION C-C



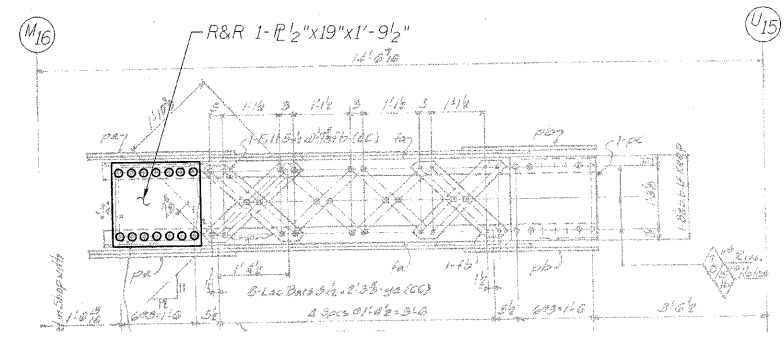
SECTION B-B



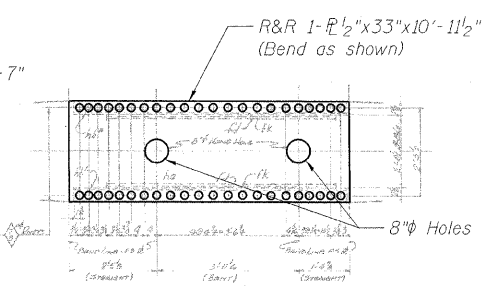
DETAIL I



SECTION H-H



SECTION D-D



SECTION M-M

LEGEND

- R&R Remove & replace
- Existing fastener to remain
- Hole to match existing location
- New hole
- Existing member to remain
- New member

Note:  
Portions of this drawing are extracted from original drawings for this bridge. Details shown are provided to illustrate the work to be performed.

DESIGNED	P. PETERSON
CHECKED	J. GRAINAWI
DRAWN	D. C. PATEL
CHECKED	A. HAMMAD

TRUSS REPAIRS  
OUTSIDE TRUSS (NORTHEAST)  
STRUCTURE NO. 016-2445

SHEET NO. 112 163 SHEETS	F.A.P RTE.	SECTION	COUNTY	TOTAL SHEETS	SHEET NO.
	389	2424.2B-R	COOK	398	193
PB Americas, Inc. 230 WEST MONROE STREET, SUITE 900 CHICAGO, IL. 60606			CONTRACT NO. 60D61		
FED. ROAD DIST. NO. 7 ILLINOIS FED. AID PROJECT					

T:\16843A\Structural\Cadd\Pre-final\EB\_Plans\0162445-60D61-TRR-110.dgn  
07-MAY-2009