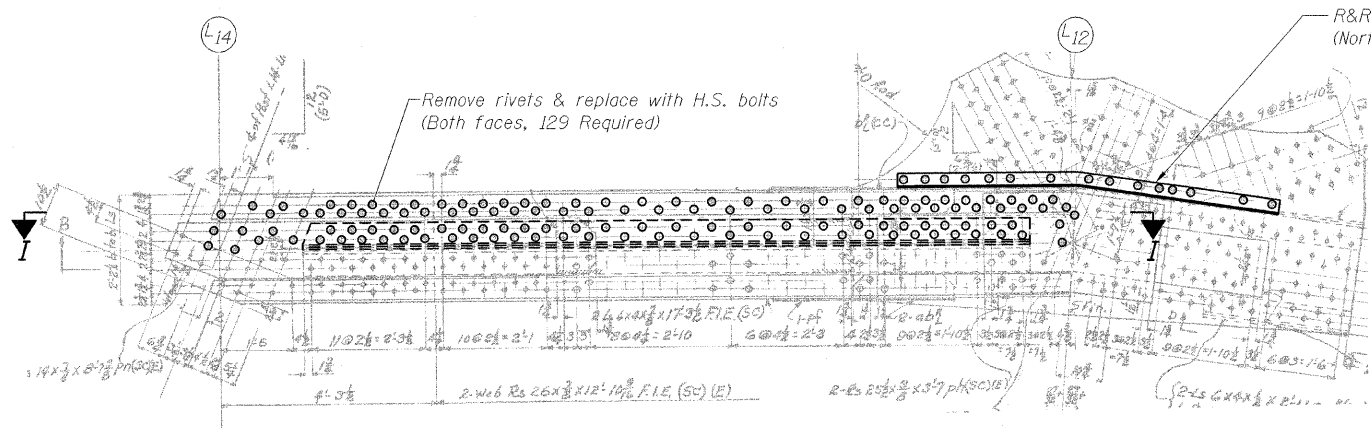
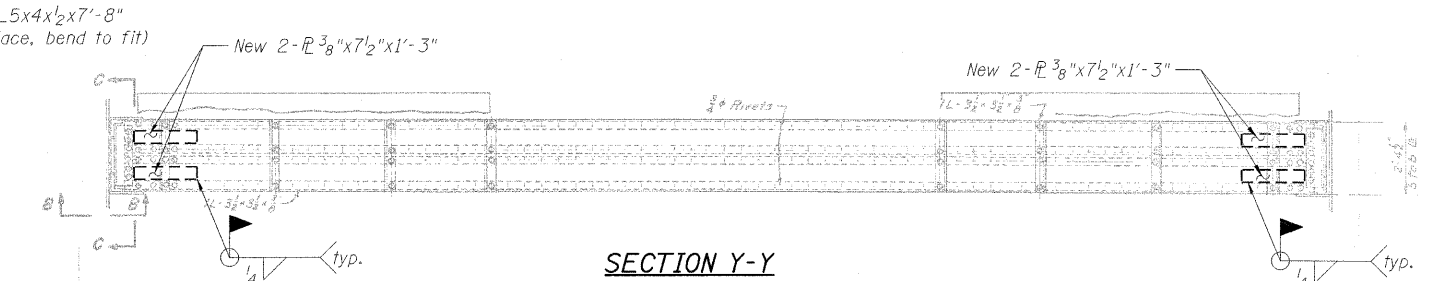


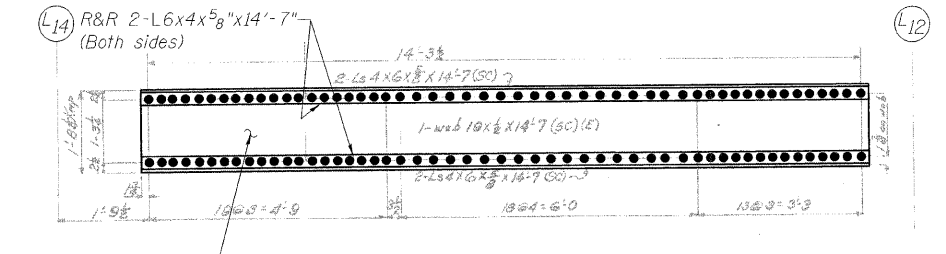
STATE OF ILLINOIS  
DEPARTMENT OF TRANSPORTATION



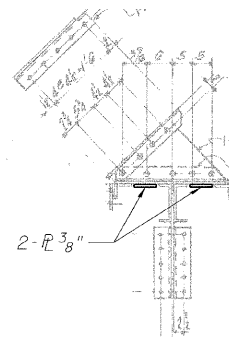
DETAIL W



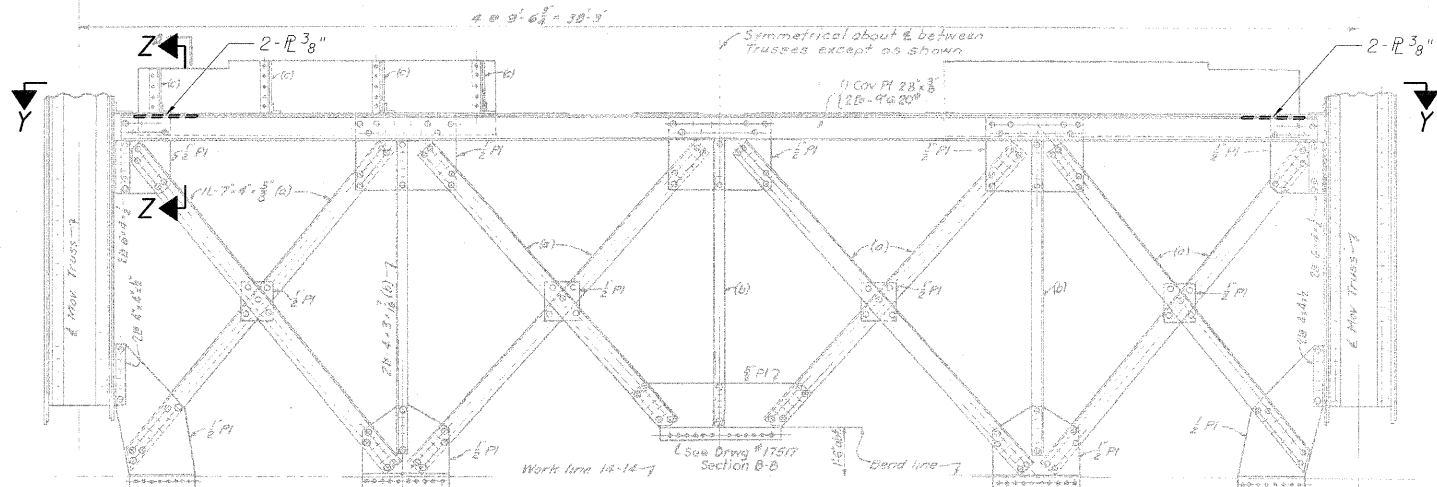
SECTION Y-Y



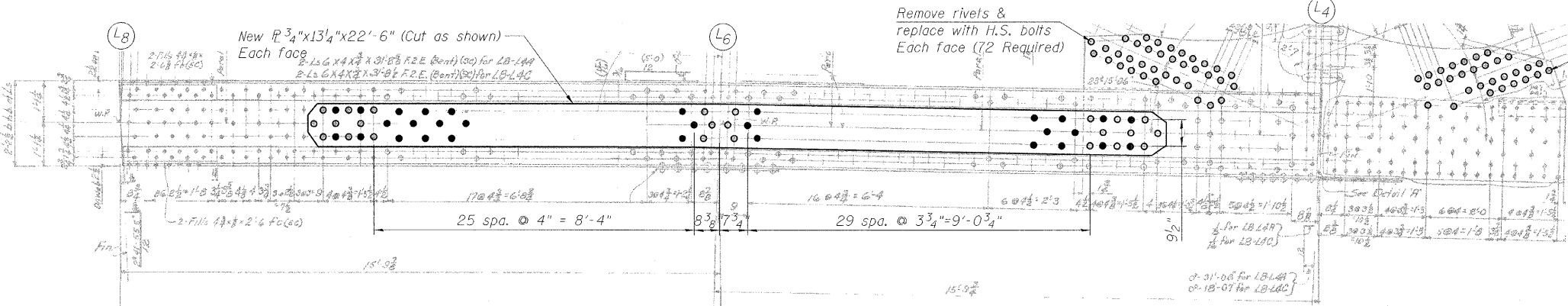
SECTION I-I



SECTION Z-Z



LATTICE TRUSS ELEVATION



DETAIL B

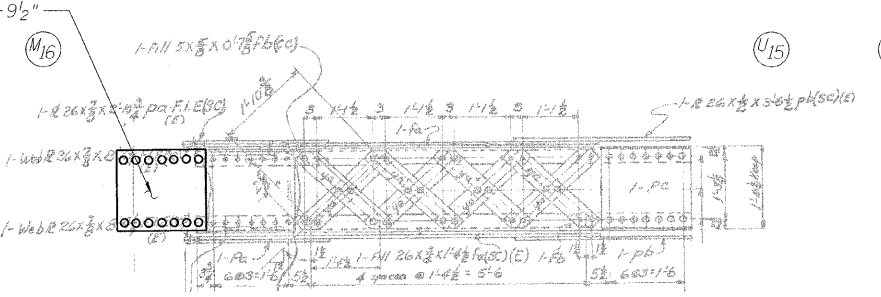
Remove rivets & replace with H.S. bolts Each face (60 Required)

LEGEND

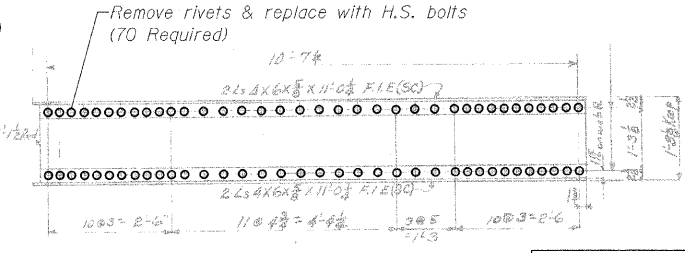
- R&R Remove & replace
- Existing fastener to remain
- Hole to match existing location
- New hole
- Existing member to remain
- New member

Note:  
Portions of this drawing are extracted from original drawings for this bridge. Details shown are provided to illustrate the work to be performed.

DESIGNED	B. GILHOUSEN
CHECKED	J. GRAINAWI
DRAWN	D. C. PATEL
CHECKED	A. HAMMAD



SECTION J-J



SECTION K-K

**PB Americas, Inc.**  
230 WEST MONROE STREET,  
SUITE 900  
CHICAGO, IL. 60606

SHEET NO. 117	F.A.P RTE.	SECTION	COUNTY	TOTAL SHEETS	SHEET NO.
	389	2424.2B-R	COOK	398	198
163 SHEETS			CONTRACT NO. 60D61		
FED. ROAD DIST. NO. 7 ILLINOIS FED. AID PROJECT					

TRUSS REPAIRS  
INSIDE TRUSS (NORTHWEST)  
STRUCTURE NO. 016-2445

T:\1684\Structural\Cadd\Pre-final\EB\_Plans\0162445-60D61-TRR-115.dgn 07-MAY-2009