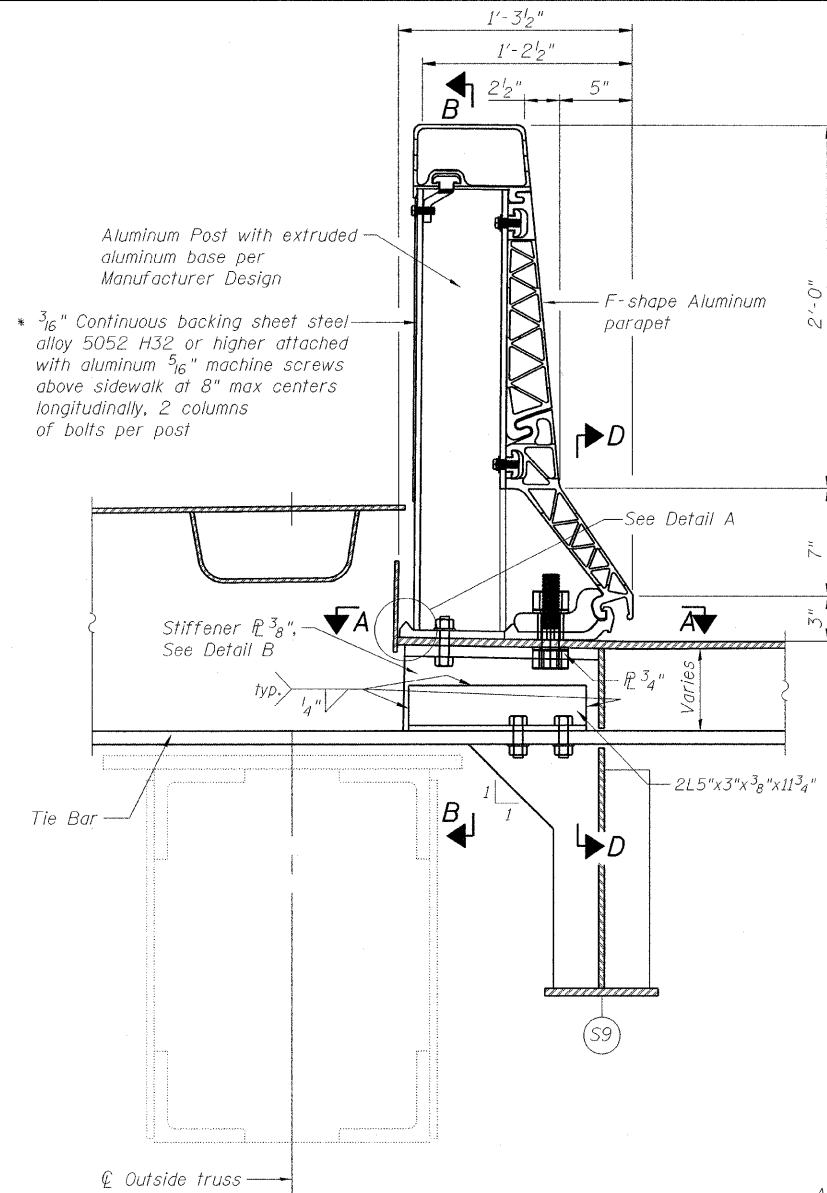
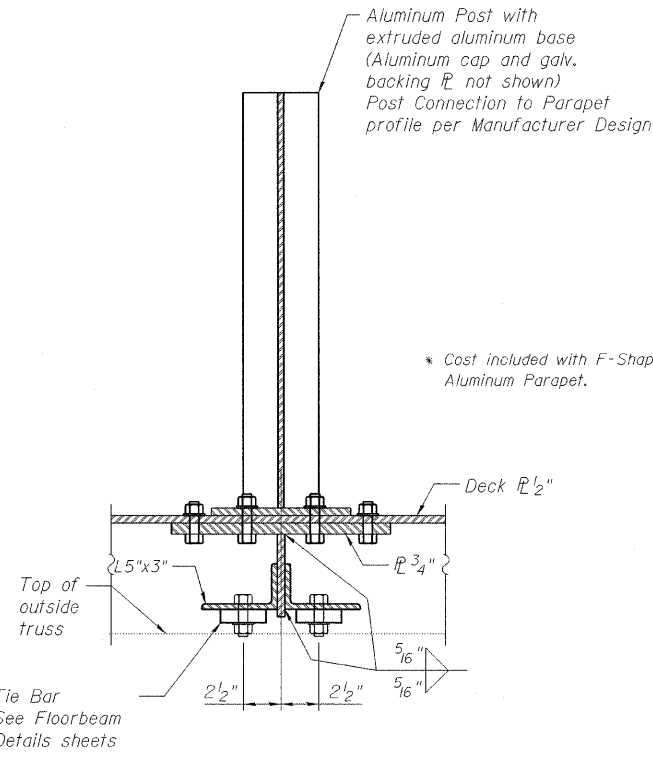


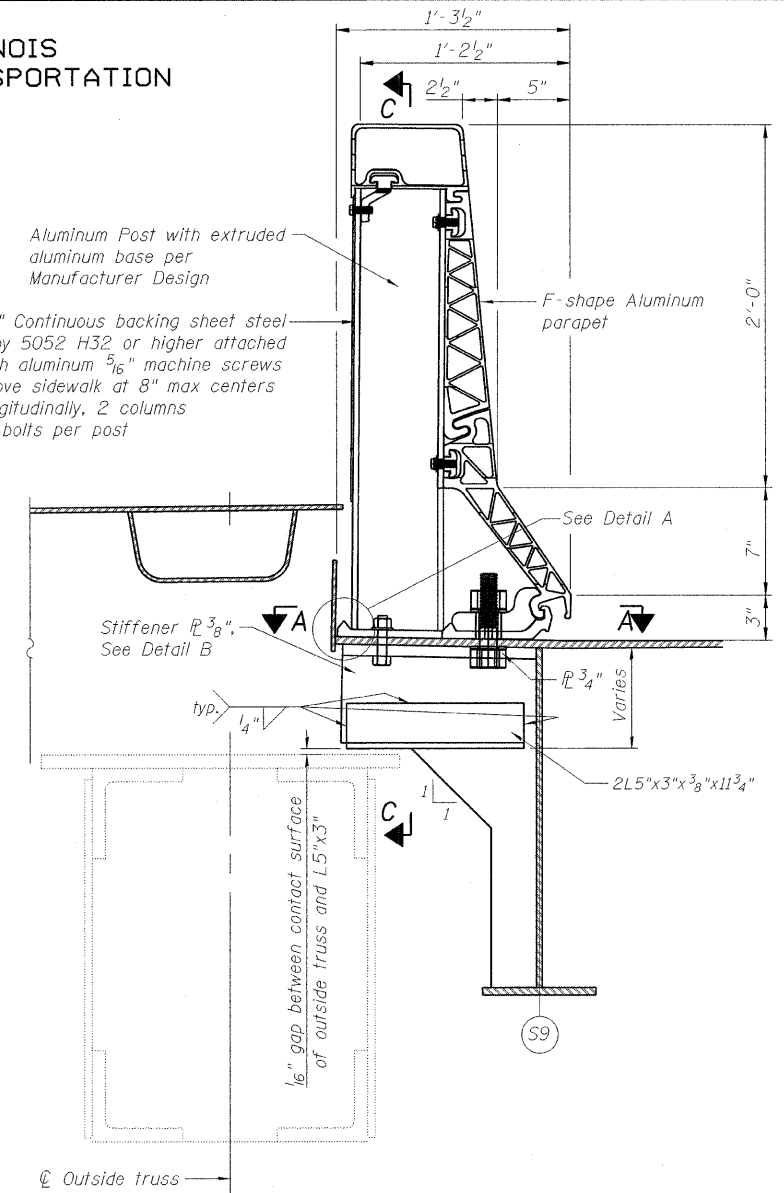
STATE OF ILLINOIS  
DEPARTMENT OF TRANSPORTATION



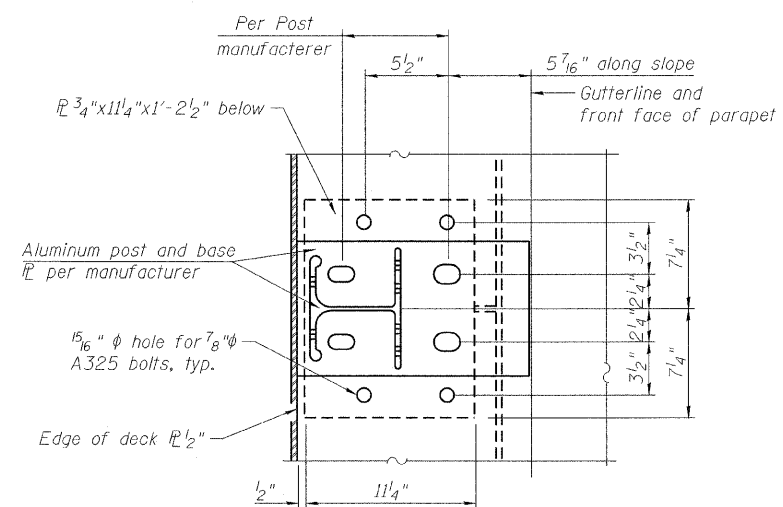
SECTION THROUGH SIDEWALK PARAPET POST AT FLOOR BEAMS



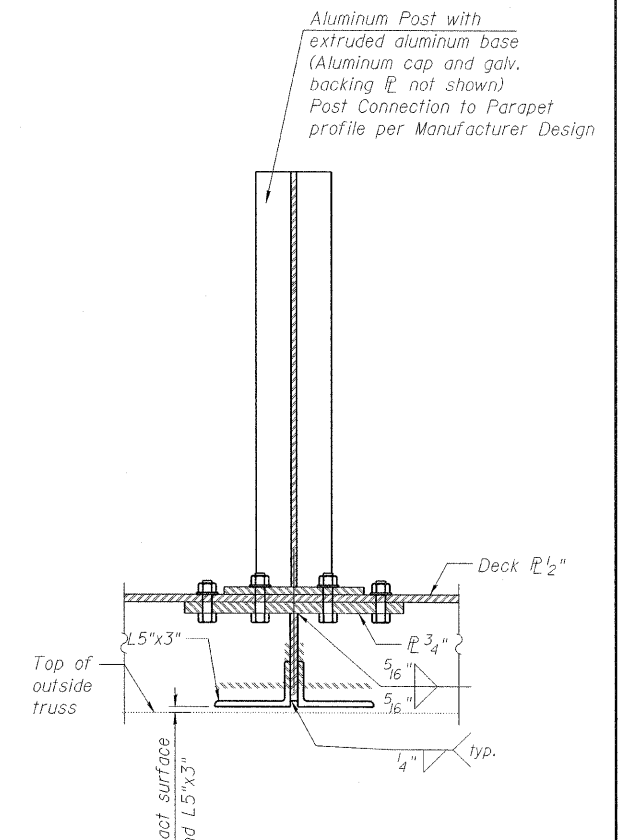
SECTION B-B



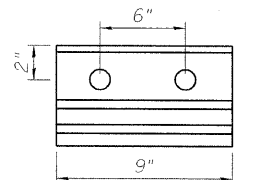
SECTION THROUGH SIDEWALK PARAPET AWAY FROM FLOOR BEAMS



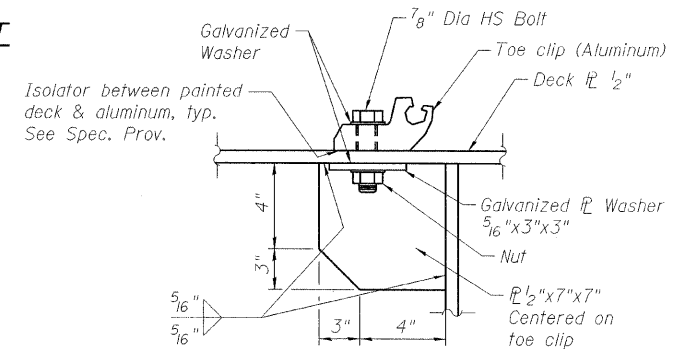
SECTION A-A



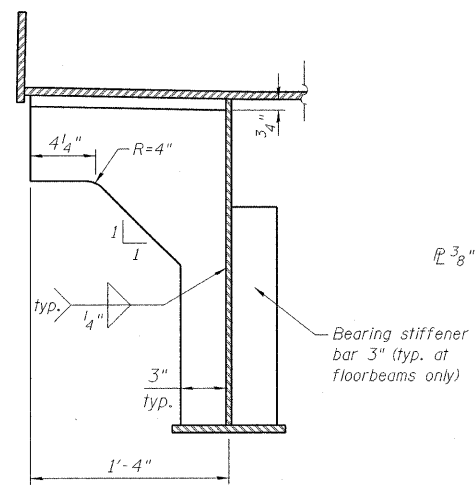
SECTION C-C



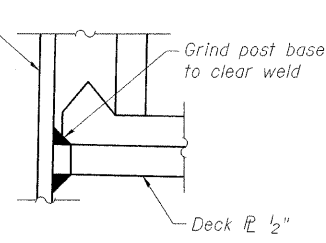
TOE CLIP DETAIL



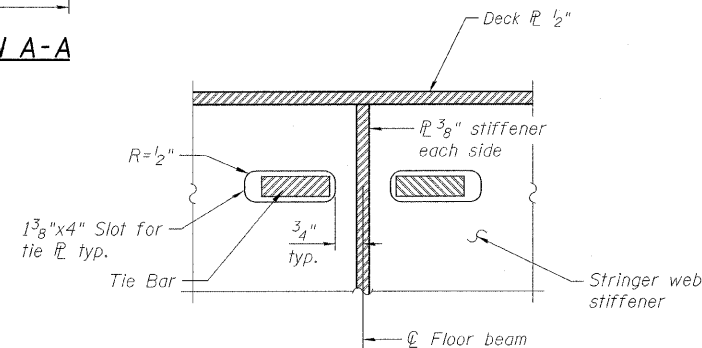
TYPICAL TOE CLIP CONNECTION



DETAIL B  
Showing typical stiffener each post location



DETAIL A



SECTION D-D

Notes:  
Parapet shall be designed to resist impact as defined by AASHTO Standard Specification 17 TH Ed. with interims.  
All nongalvanized steel shall be protected from contact with aluminum material by approved isolator.

DESIGNED	P. PILARSKI
CHECKED	J. GRAINAWI
DRAWN	D. C. PATEL
CHECKED	A. HAMMAD

**PB Americas, Inc.**  
230 WEST MONROE STREET,  
SUITE 900  
CHICAGO, IL. 60606

SHEET NO. 134	F.A.P RTE. 389	SECTION 2424.2B-R	COUNTY COOK	TOTAL SHEETS 398	SHEET NO. 215
CONTRACT NO. 60D61					
FED. ROAD DIST. NO. 7 ILLINOIS FED. AID PROJECT					

SIDEWALK PARAPET DETAILS  
MOVABLE SPAN  
STRUCTURE NO. 016-2445

T:\16843A\Structural\Cadd\Pre-final\EB\_Plans\0162445-60D61-134-NUB.dgn  
05-JUN-2009 13:46