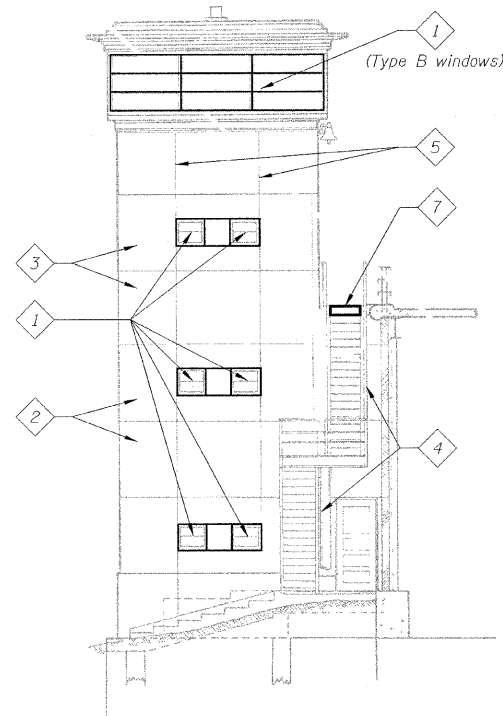
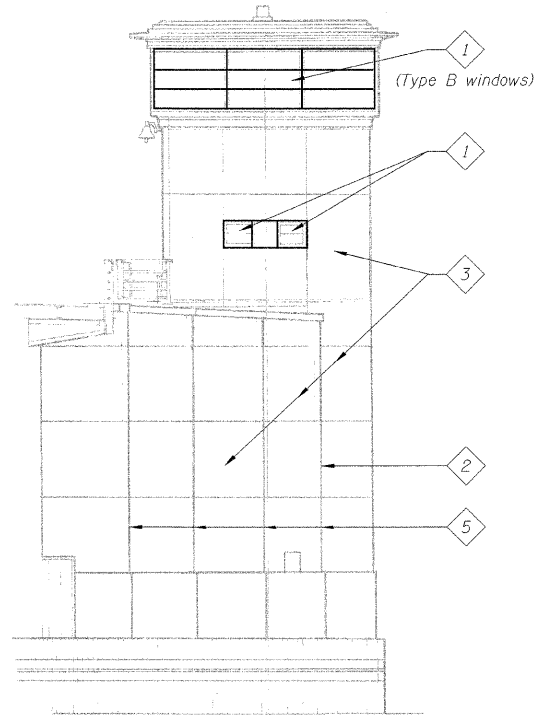


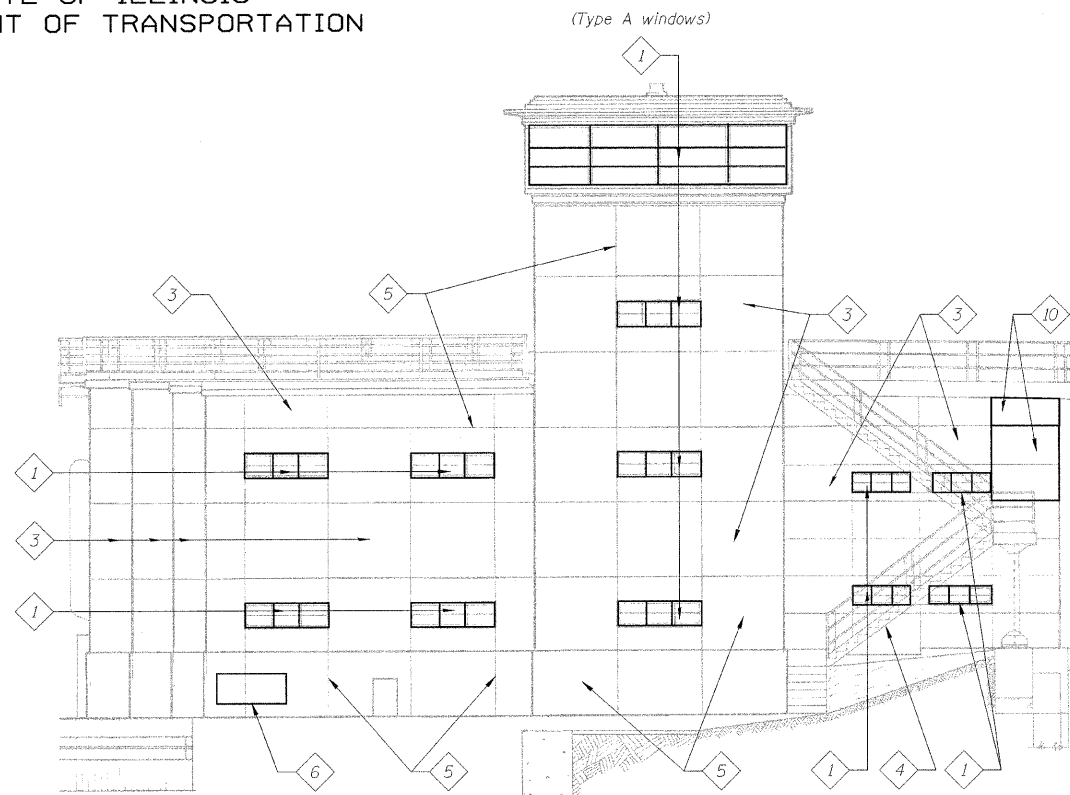
STATE OF ILLINOIS
DEPARTMENT OF TRANSPORTATION



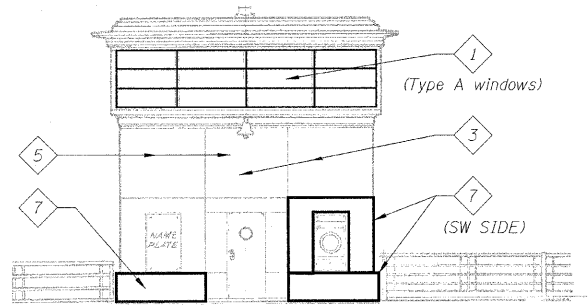
ELEVATION B-B
(East elevation, Southeast house)



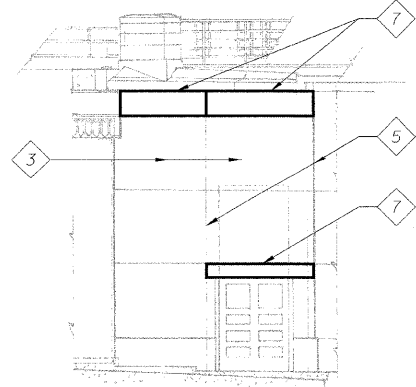
ELEVATION C-C
(West elevation, Southeast house)



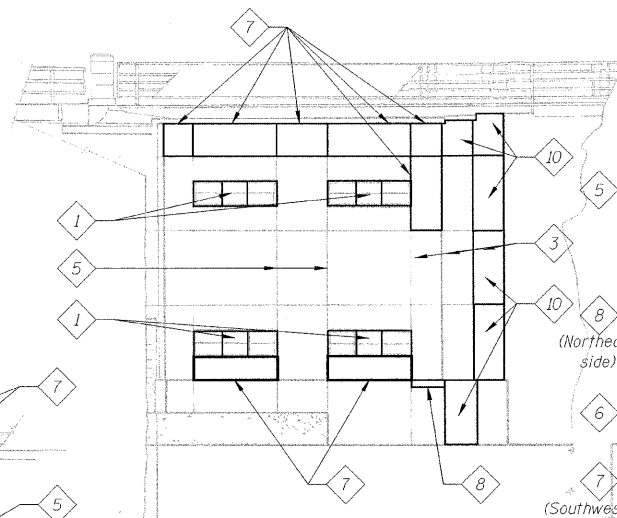
ELEVATION D-D
(South elevation, Southeast house)



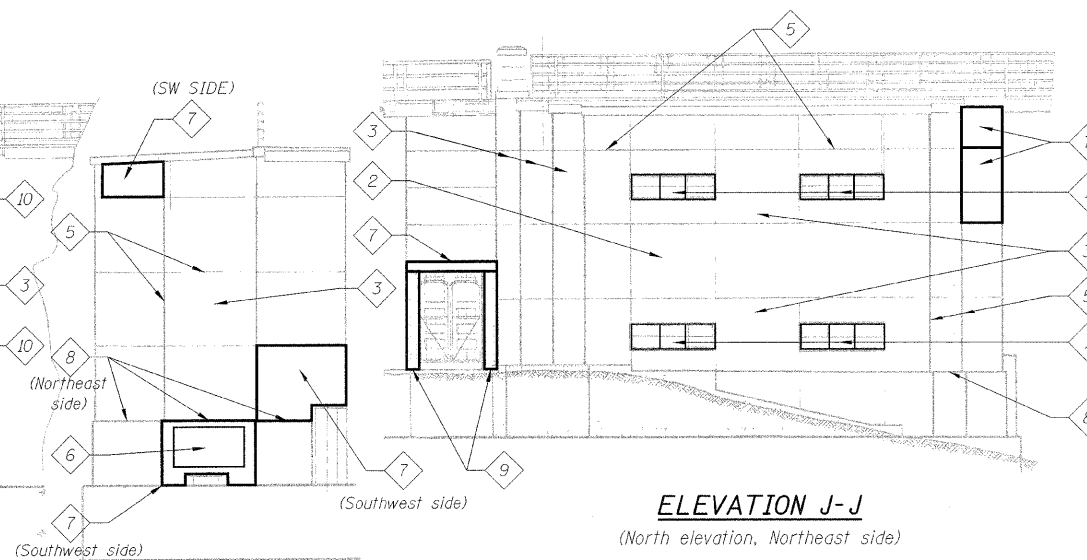
ELEVATION E-E
(Roadway Elevation,
Northeast side and Southwest side)



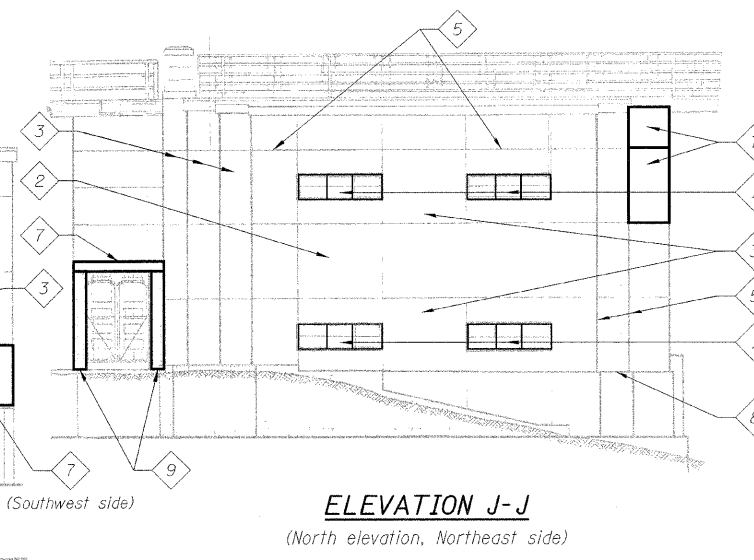
ELEVATION F-F
(Southwest elevation, Southwest side)



ELEVATION G-G
(South elevation, Southwest side)



ELEVATION H-H
(West elevation, Northwest side,
East elevation, Southwest side)



ELEVATION J-J
(North elevation, Northeast side)

KEYED NOTES:

- 1 Remove and replace all existing windows
- 2 Remove all vegetation from limestone - entire face of facade
- 3 Clean all limestone panels - entire face of facade
- 4 Remove and replace existing stair
- 5 Remove material from all mortar joints - entire face of facade
- 6 Remove signage and re-install
- 7 Remove and replace limestone panel
- 8 Repair existing limestone panel
- 9 Remove and replace steel panel
- 10 Reset limestone panel

LEGEND:

- Existing member to remain
- New member

Note:
Portions of this drawing are extracted from original drawings for this bridge. Details shown are provided to illustrate the work to be performed.

**ELEVATIONS
STRUCTURE NO. 016-2445**

DESIGNED	K. STOCKIE
CHECKED	J. SHURMAN
DRAWN	E. KIENSTRA
CHECKED	A. HAMMAD

PB Americas, Inc.
230 WEST MONROE STREET,
SUITE 900
CHICAGO, IL. 60606

SHEET NO. 139	F.A.P. RTE. 389	SECTION 2424.2B-R	COUNTY COOK	TOTAL SHEETS 398	SHEET NO. 220
163 SHEETS		CONTRACT NO. 60D61		FED. ROAD DIST. NO. 7 ILLINOIS FED. AID PROJECT	