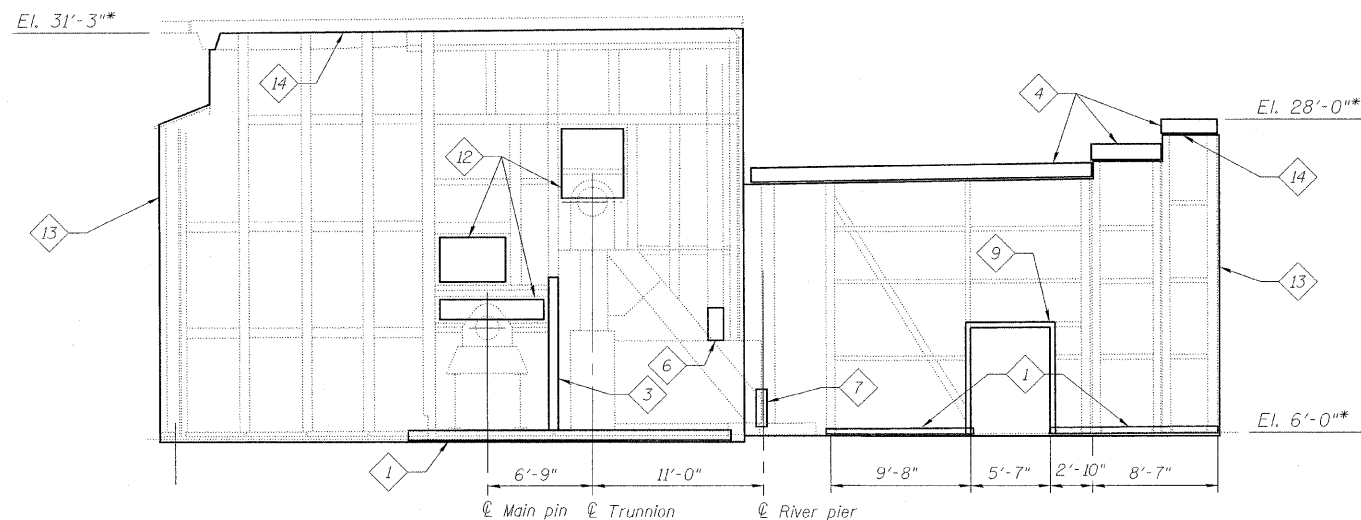
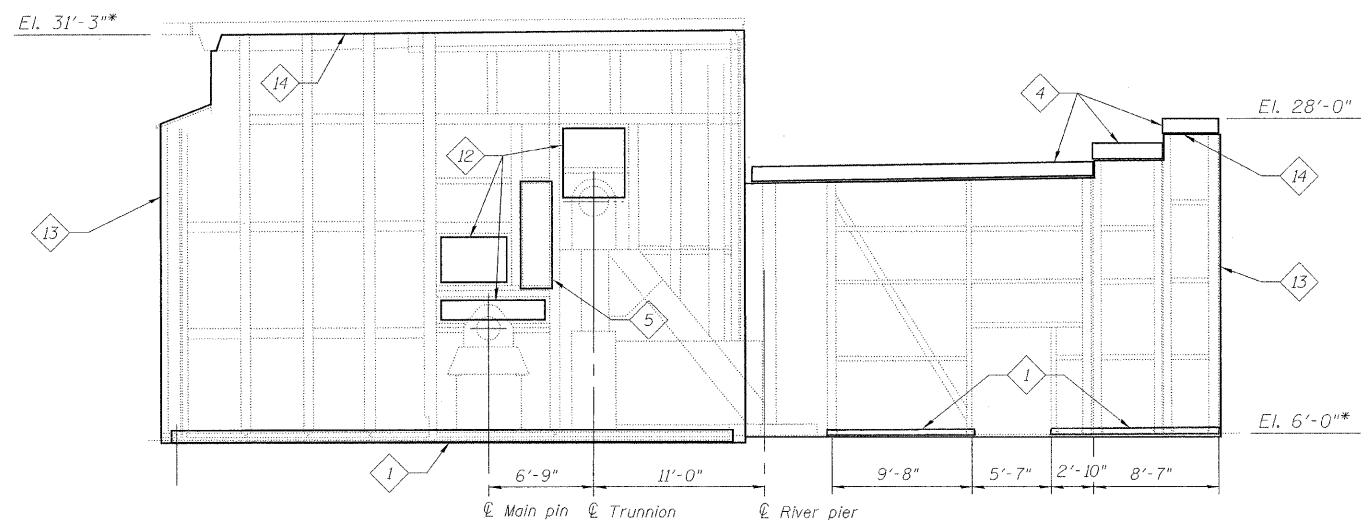


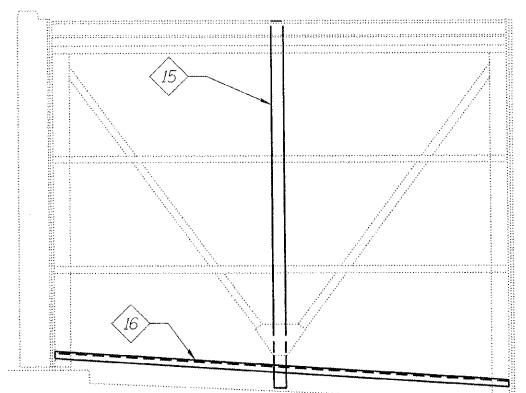
STATE OF ILLINOIS
DEPARTMENT OF TRANSPORTATION



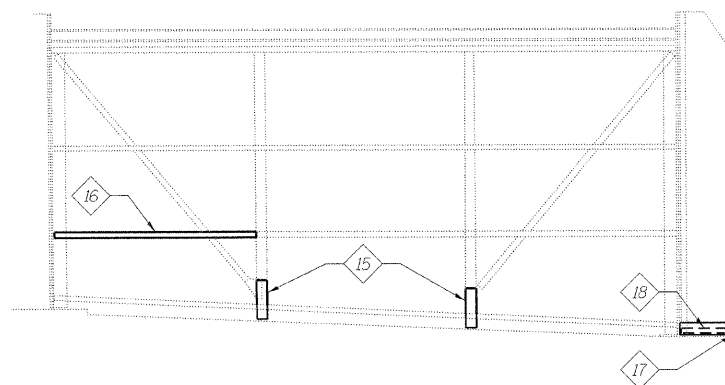
ELEVATION F2
ENCLOSURE WALL ELEVATION



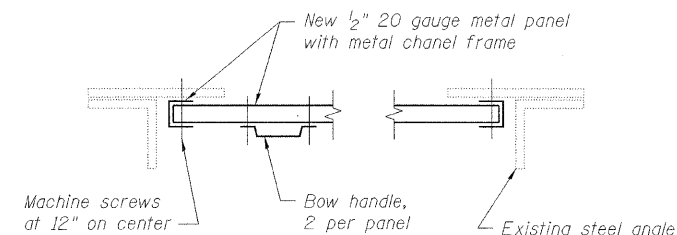
ELEVATION K2
ENCLOSURE WALL ELEVATION



ELEVATION M2
ENCLOSURE WALL ELEVATION



ELEVATION N2
ENCLOSURE WALL ELEVATION



TYPICAL PLAN SECTION - REMOVABLE PANEL

SCALE: NONE

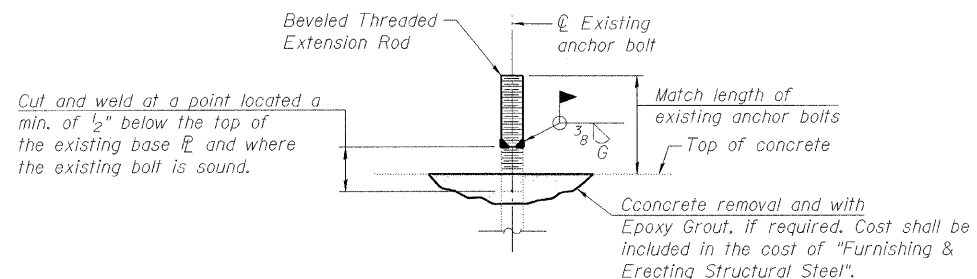
KEYED NOTES:

- 1 Remove and replace 4"x4"x³/₈" angle and 18"x³/₈" plate along the bottom of all enclosure walls.
- 2 NOT USED
- 3 Repair base of WT5x24.5.
- 4 Remove and replace C10x20.
- 5 Remove and replace doors and frames.
- 6 Repair connection at base of W12x58 and 7"x4"x⁵/₈" angles.
- 7 Repair 1" bent plate and holes in base of builtup section at the southeast support of the machinery.
- 8 NOT USED
- 9 Remove and replace double door frame.
- 10 NOT USED
- 11 NOT USED
- 12 Replace removable panel. See Panel Detail this sheet.
- 13 Limits of new 1/2" thick (20 gauge) fixed metal wall panels on steel framing (unless noted otherwise).
- 14 Underside of structure above.
- 15 Repair W6x25 column, see Detail B.
- 16 Remove and replace C6x13.
- 17 Remove and replace ³/₈" PL.
- 18 Remove and replace L4x4x¹/₂".

Note:
The removal of existing plywood wall paneling at some wall section is included in the cost Metal Panels.

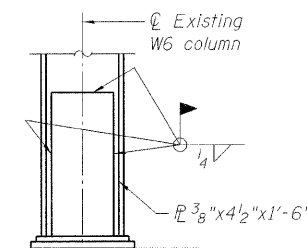
LEGEND:

- Existing member to remain
- New member



ANCHOR BOLT EXTENSION DETAIL

The furnishing and installation of required Anchor Bolt Extensions shall be included in the cost of "Furnishing & Erecting Structural Steel".



DETAIL B

* Based on existing drawings.

DESIGNED	K. STOCKIE
CHECKED	J. SHURMAN
DRAWN	E. KIENSTRA
CHECKED	A. HAMMAD

ENCLOSURE WALL ELEVATIONS
STRUCTURE NO. 016-2445

SHEET NO. 144	F.A.P RTE.	SECTION	COUNTY	TOTAL SHEETS	SHEET NO.
	389	2424.2B-R	COOK	398	225
163 SHEETS	CONTRACT NO. 60661			FED. ROAD DIST. NO. 7 ILLINOIS FED. AID PROJECT	

PB Americas, Inc.
230 WEST MONROE STREET,
SUITE 900
CHICAGO, IL. 60606