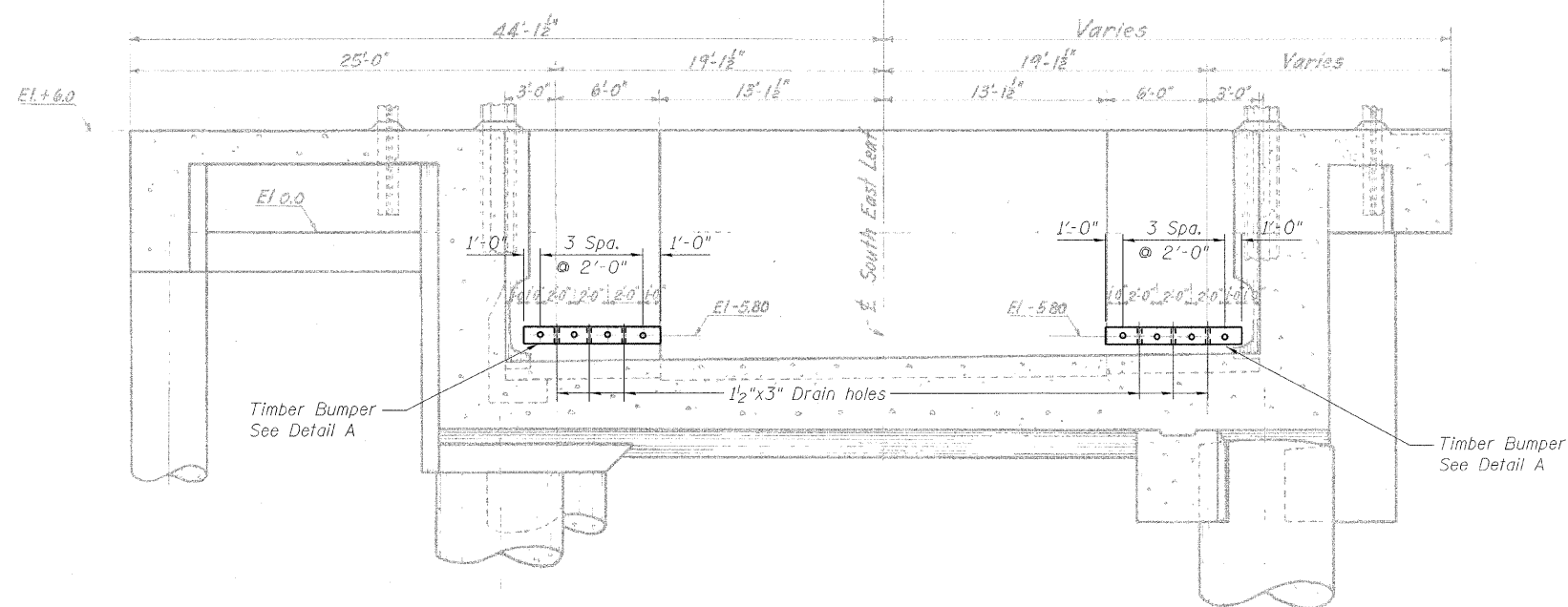
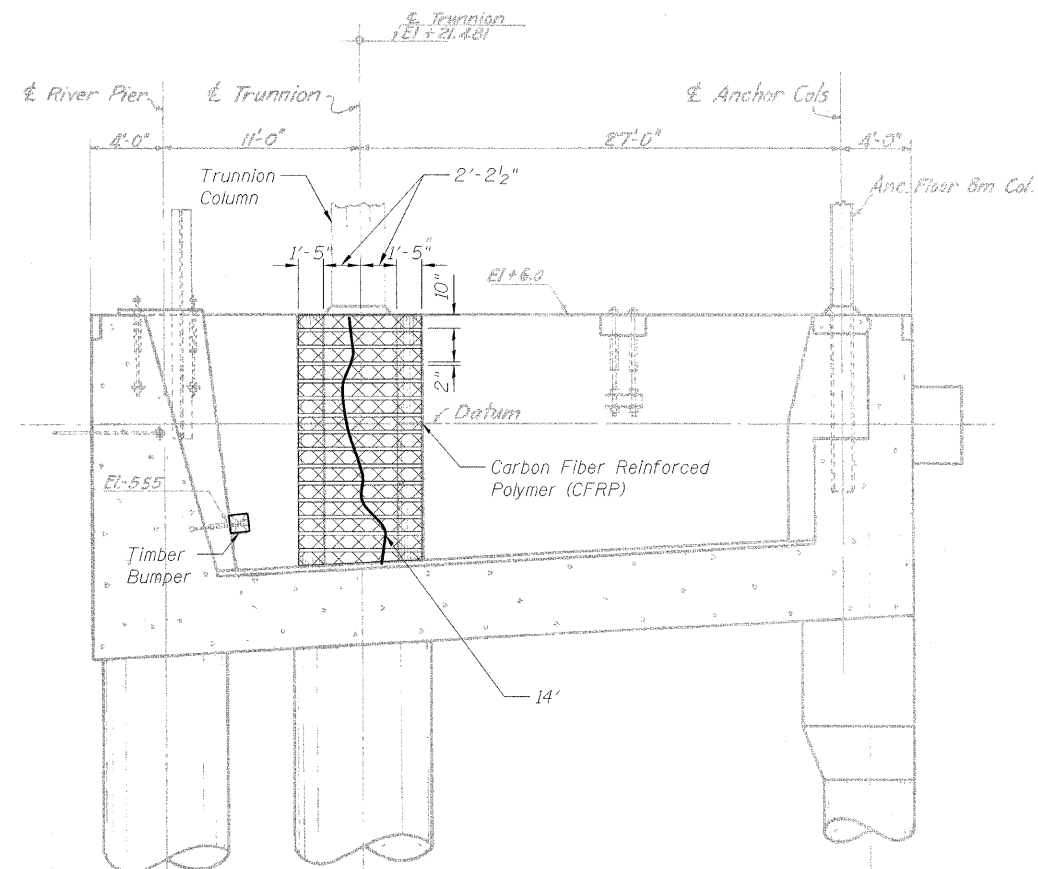


STATE OF ILLINOIS
DEPARTMENT OF TRANSPORTATION




SECTION B-B



SECTION C-C

DESIGNED	A. HAMMAD
CHECKED	J. GRAINAWI
DRAWN	D. C. PATEL
CHECKED	A. HAMMAD

LEGEND

- 6' — } Epoxy crack injection
- HL — } Hairline Crack - not to be sealed
-  Carbon Fiber Reinforced Polymer (CFRP)

BILL OF MATERIAL

Item	Unit	Quantity
Epoxy Crack Injection	Foot	40
Carbon Fiber Reinforced Polymer Repair	Sq. Ft.	248.8
Timber Bumper	Foot	16
Counterweight Pit Cleaning	Each	1

Notes:
Portions of this drawing are extracted from original drawings for this bridge. Details shown are provided to illustrate the work to be performed.
Elevations are based on existing drawings. Contractor shall verify existing elevations and dimensions prior to ordering any material.
See sheet 150 of 163 for Detail A.

EAST COUNTERWEIGHT
PIT REPAIR (NORTHEAST)
STRUCTURE NO. 016-2445

PB Americas, Inc.
230 WEST MONROE STREET,
SUITE 900
CHICAGO, IL. 60606

SHEET NO. 153 163 SHEETS	F.A.P. RTE.	SECTION	COUNTY	TOTAL SHEETS	SHEET NO.
	389	2424.2B-R	COOK	398	234
CONTRACT NO. 60D61					
FED. ROAD DIST. NO. 7 ILLINOIS FED. AID PROJECT					