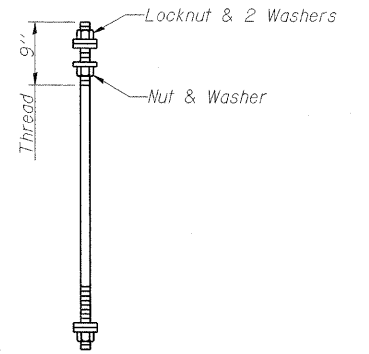
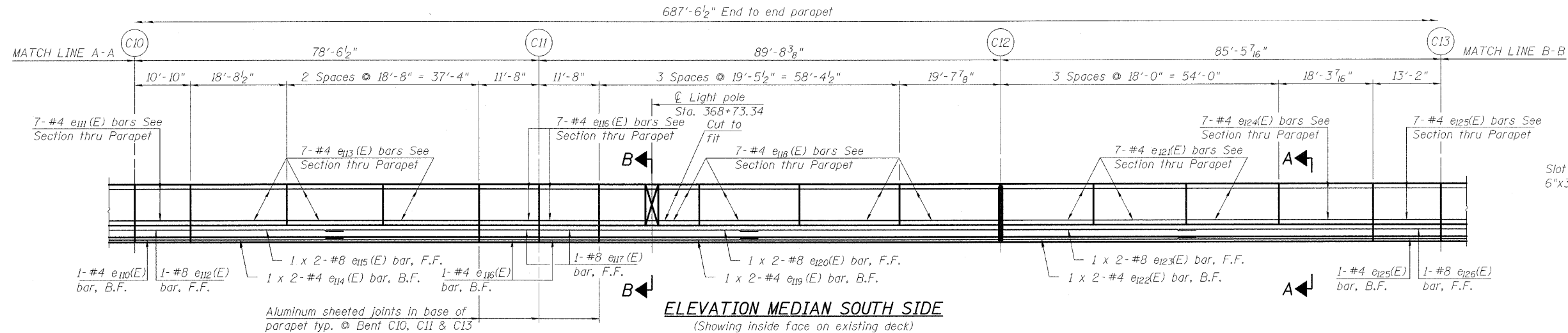
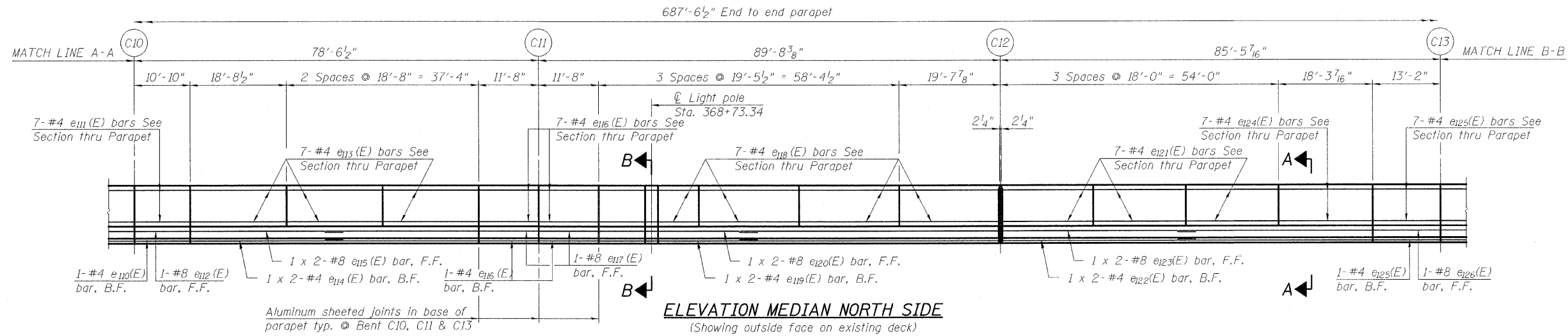
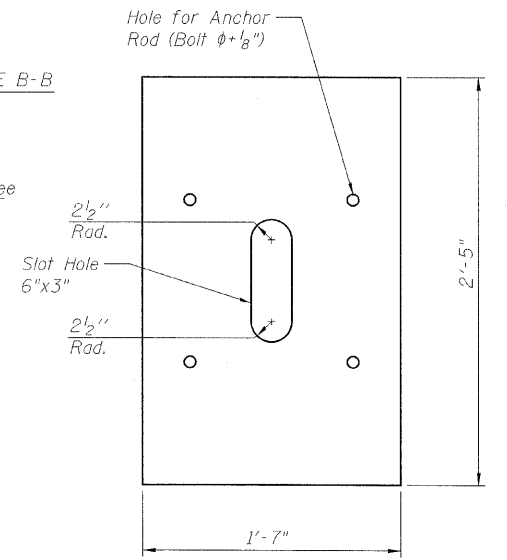


STATE OF ILLINOIS
DEPARTMENT OF TRANSPORTATION



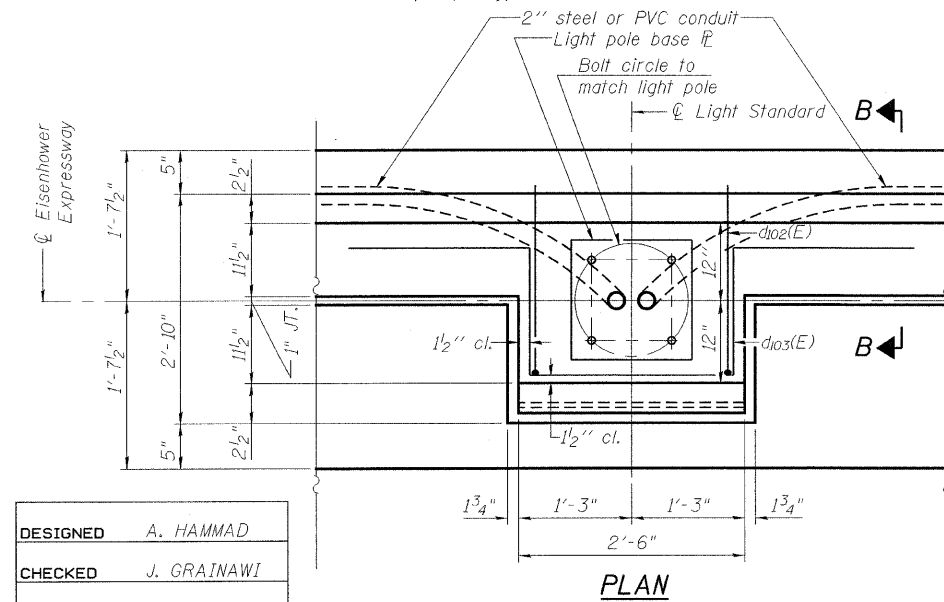
MODIFIED ANCHOR ROD
Diameter as specified for light poles.
(ASTM F 1554 Grade 105)



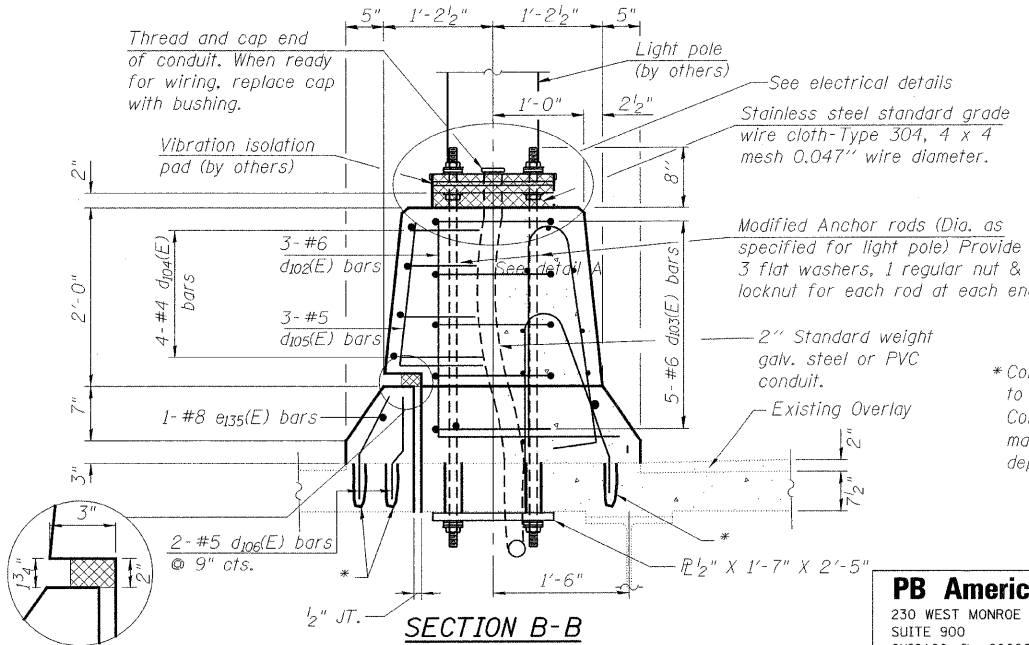
1/2" X 1'-7" X 2'-5"
(3 Required)

Note:
See sheet 157 of 163 for Matchline A-A.
See sheet 159 of 163 for Matchline B-B
and bill of material.

SUPERSTRUCTURE DETAILS
STRUCTURE NO. 016-0461



Note:
Cost of anchor rods and conduit is included with Concrete Superstructure.



*Core and set #5 d101(E) and d106(E) bars according to Article 509.06 of the Standard Specifications. Cored hole shall be roughened or scored per manufacturer's recommendations. Maximum depth of hole shall not exceed 7 1/2".

DESIGNED	A. HAMMAD
CHECKED	J. GRAINAWI
DRAWN	D. C. PATEL
CHECKED	A. HAMMAD

SHEET NO. 158	F.A.P RTE.	SECTION	COUNTY	TOTAL SHEETS	SHEET NO.
	389	2424.2B-R	COOK	398	239
163 SHEETS	CONTRACT NO. 60D61			FED. ROAD DIST. NO. 7 ILLINOIS FED. AID PROJECT	

PB Americas, Inc.
230 WEST MONROE STREET,
SUITE 900
CHICAGO, IL. 60606

T:\16643A\Structural\Cadd\Pre-Final\EB_Plans\0162445-60D61-MBR-202.dgn
07-MAY-2009