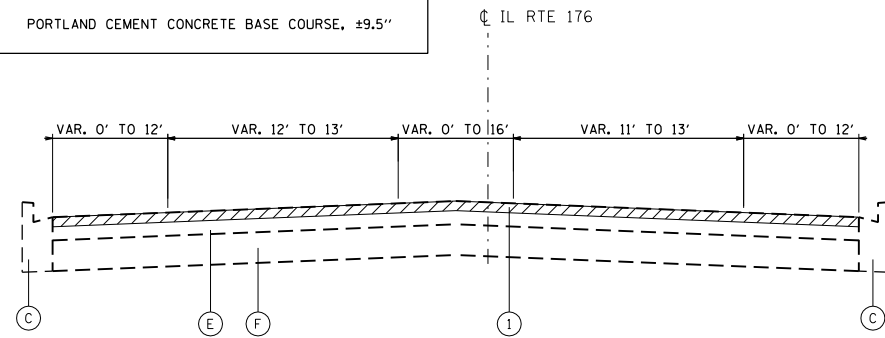


EXISTING CONDITIONS

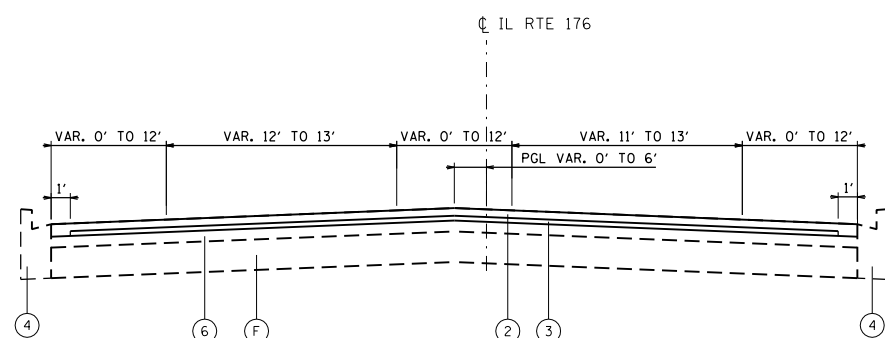
- (A) HOT-MIX ASPHALT RESURFACING, ±4"
- (B) PORTLAND CEMENT CONCRETE PAVEMENT, 10"
- (C) COMBINATION CONCRETE CURB AND GUTTER
- (D) AGGREGATE SHOULDERS
- (E) HOT-MIX ASPHALT RESURFACING, VARIES ±5" TO ±7"
- (F) PORTLAND CEMENT CONCRETE BASE COURSE, ±9.5"

PROPOSED IMPROVEMENTS

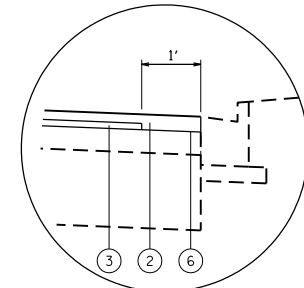
- (1) HOT-MIX ASPHALT SURFACE REMOVAL, 2 1/2"
- (2) HOT-MIX ASPHALT SURFACE COURSE, MIX "D", N70, 1 1/2"
- (3) POLYMERIZED LEVELING BINDER (MACHINE METHOD), IL-4.75, N50, 1"
- (4) COMBINATION CONCRETE CURB & GUTTER REMOVAL AND REPLACEMENT (AT LOCATIONS AS DETERMINED BY THE ENGINEER)
- (5) AGGREGATE WEDGE SHOULDER, TYPE B (TAPER 3" TO 1" THICKNESS) - SEE SAFETY EDGE DETAIL
- (6) EXISTING HOT-MIX ASPHALT SURFACE AFTER PROPOSED SURFACE REMOVAL



EXISTING TYPICAL SECTION
STA. 85+00 TO STA. 91+72

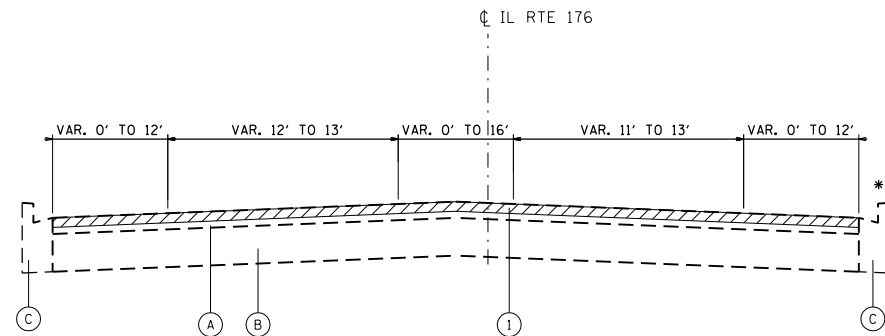


PROPOSED TYPICAL SECTION
STA. 85+00 TO STA. 91+72



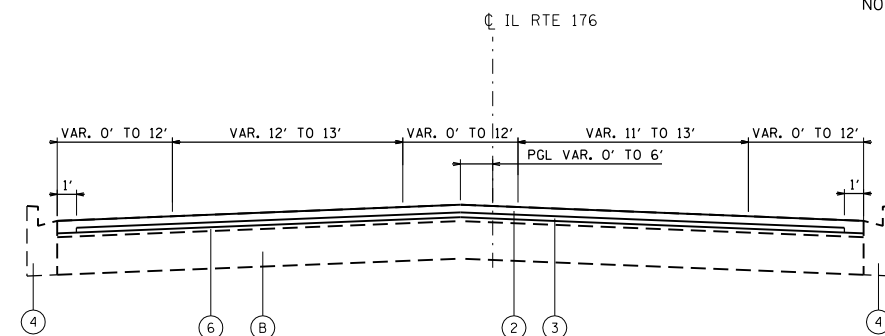
RESURFACING TREATMENT AT EDGE OF PAVEMENT
N.T.S.

NOTE: THE POLYMERIZED LEVELING BINDER SHALL RECEDE 1' FROM THE EDGE OF PAVEMENT. THE INCREASED THICKNESS OF HMA SURFACE COURSE ALONG THE EDGE SHALL BE INCLUDED IN THE COST OF HOT-MIX ASPHALT SURFACE COURSE, MIX "D", N70.



EXISTING TYPICAL SECTION
STA. 91+72 TO STA. 149+11

* CURB & GUTTER ENDS - STA. 144+74



PROPOSED TYPICAL SECTION
STA. 91+72 TO STA. 149+11

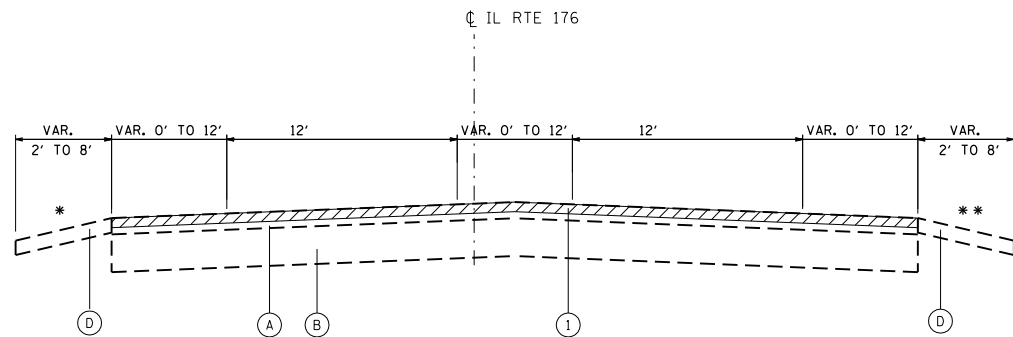
* CURB & GUTTER ENDS - STA. 144+74

HOT-MIX ASPHALT MIXTURE REQUIREMENTS

MIXTURE TYPE	AIR VOIDS	QUALITY MANAGEMENT PROGRAM (QMP)
PAVEMENT RESURFACING		
HOT-MIX ASPHALT SURFACE COURSE, MIX "D", N70 (IL-9.5mm)	4% @ 70 GYR.	PFP
POLYMERIZED LEVELING BINDER (MACHINE METHOD), IL-4.75, N50	3.5% @ 50 GYR.	OCP
HMA SHOULDER RESURFACING		
HOT-MIX ASPHALT SURFACE COURSE, MIX "D", N70 (IL-9.5mm)	4% @ 70 GYR.	PFP
POLYMERIZED LEVELING BINDER (MACHINE METHOD), IL-4.75, N50	3.5% @ 50 GYR.	OCP
PATCHING		
CLASS D PATCHES (HMA BINDER, IL-19mm)	4% @ 70 GYR.	OC/OA
HMA REPLACEMENT OVER PATCHES (HMA BINDER IL-19mm)	4% @ 70 GYR.	OC/OA
DRIVEWAYS		
HMA SURFACE COURSE, MIX "D", N70 (IL-9.5mm); 2"	4% @ 70 GYR.	PFP
HMA BASE COURSE (HMA BINDER IL-19mm); 8"	4% @ 50 GYR.	OC/OA

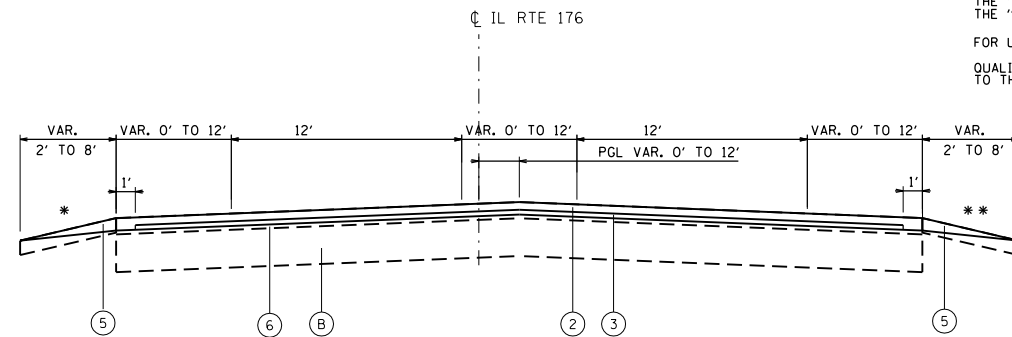
QMP DESIGNATION: QUALITY CONTROL/QUALITY ASSURANCE (OC/OA); QUALITY CONTROL FOR PERFORMANCE (OCP); PAY FOR PERFORMANCE (PFP)

THE UNIT WEIGHT TO CALCULATE ALL HMA SURFACE MIXTURE QUANTITIES IS 112 LBS/50 YD³/IN
 THE "AC TYPE" FOR POLYMERIZED HMA MIXES SHALL BE "SBS/SBR PG 76-22" AND FOR NON-POLYMERIZED HMA THE "AC TYPE" SHALL BE "PG 64-22" UNLESS MODIFIED BY DISTRICT ONE SPECIAL PROVISIONS.
 FOR USE OF RECYCLED MATERIALS SEE DISTRICT ONE SPECIAL PROVISIONS.
 QUALITY MANAGEMENT PROGRAM IDENTIFIES THE PARTICULAR QUALITY CONTROL SPECIFICATION THAT APPLIES TO THE HMA MIXTURE



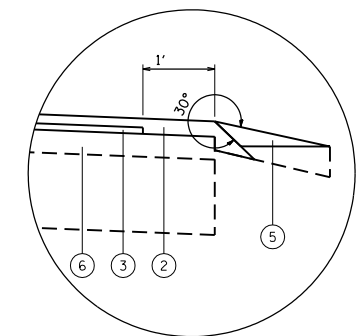
EXISTING TYPICAL SECTION
STA. 149+11 TO STA. 213+00
STA. 261+00 TO STA. 364+67

* HMA SHOULDER - STA. 316+51 TO STA. 323+53
STA. 357+03 TO STA. 358+52
STA. 361+33 TO STA. 364+67
** HMA SHOULDER - STA. 345+99 TO STA. 355+54



PROPOSED TYPICAL SECTION
STA. 149+11 TO STA. 213+00
STA. 261+00 TO STA. 364+67

* HMA SHOULDER - STA. 316+51 TO STA. 323+53
STA. 357+03 TO STA. 358+52
STA. 361+33 TO STA. 364+67
** HMA SHOULDER - STA. 345+99 TO STA. 355+54



SAFETY EDGE DETAIL
N.T.S.

NOTE: THE CONTRACTOR SHALL MILL FIRST BEFORE PATCHING FROM APPROXIMATELY STA. 85+00 TO STA. 91+72. THE CONTRACTOR SHALL PATCH FIRST BEFORE MILLING FROM APPROXIMATELY STA. 91+72 TO STA. 364+67. SEE DISTRICT 1 DETAIL PAVEMENT PATCHING FOR HMA SURFACED PAVEMENT.

COMPANY NAME: #COMPANY-NAME
 PROJECT CONTACT: #PROJECT-CONTACT
 DATE PLOTTED: 6/9/2014 10:06:29 AM
 FILE NAME: 86100196.08-ty-01.dgn
 PLOT DRIVER: plotah
 PEN TABLE: standard-trans.tbl



USER NAME = bhartma	DESIGNED - B. HARTMAN	REVISED -
PLOT SCALE = N.T.S.	DRAWN -	REVISED -
PLOT DATE = 6/9/2014	CHECKED - T. HAMILTON	REVISED -
	DATE - 6/9/14	REVISED -

**STATE OF ILLINOIS
DEPARTMENT OF TRANSPORTATION**

**TYPICAL SECTIONS
ILLINOIS ROUTE 176 (US ROUTE 12 TO HILLTOP TER.)**

SCALE: N.T.S. SHEET NO. 1 OF 1 SHEETS STA. BEGIN TO STA. END

F.A. RTE.	SECTION	COUNTY	TOTAL SHEETS	SHEET NO.
335	145X-RS-2	LAKE	44	7
CONTRACT NO. 60N62				
FED. ROAD DIST. NO. ILLINOIS FED. AID PROJECT				