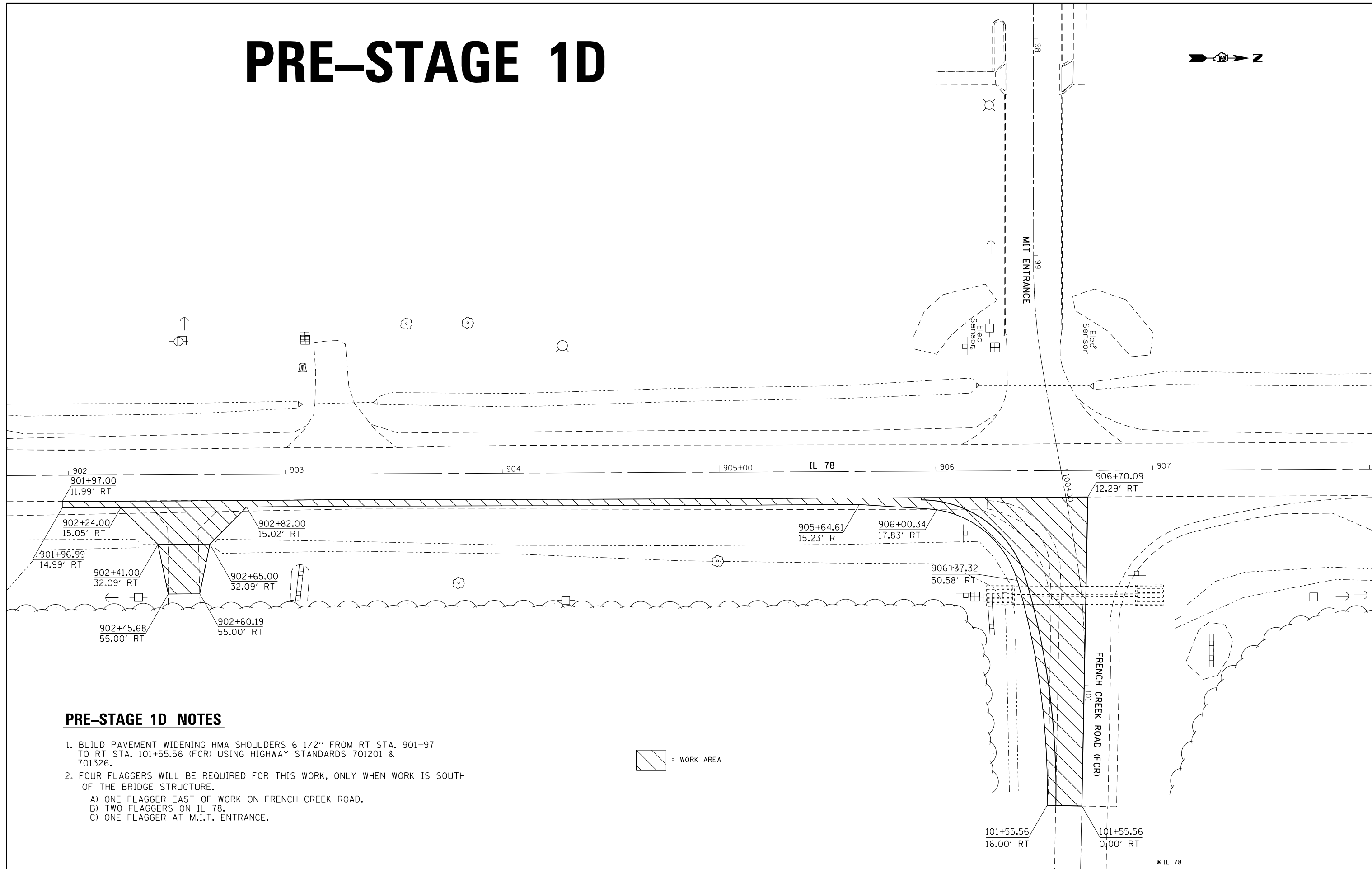
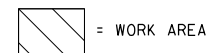


PRE-STAGE 1D



PRE-STAGE 1D NOTES

1. BUILD PAVEMENT WIDENING HMA SHOULDERS 6 1/2" FROM RT STA. 901+97 TO RT STA. 101+55.56 (FCR) USING HIGHWAY STANDARDS 701201 & 701326.
2. FOUR FLAGGERS WILL BE REQUIRED FOR THIS WORK, ONLY WHEN WORK IS SOUTH OF THE BRIDGE STRUCTURE.
 - A) ONE FLAGGER EAST OF WORK ON FRENCH CREEK ROAD.
 - B) TWO FLAGGERS ON IL 78.
 - C) ONE FLAGGER AT M.I.T. ENTRANCE.



FILE NAME =	USER NAME = Fasslermj	DESIGNED -	REVISED -
ca:\pw_work\pwidot\fasslermj\d0149594\0208209-shit-staging.dgn		DRAWN -	REVISED -
	PLOT SCALE = 40.0000' / in.	CHECKED -	REVISED -
	PLOT DATE = Fri Jun 13 11:52:21 2014	DATE -	REVISED -

**STATE OF ILLINOIS
DEPARTMENT OF TRANSPORTATION**

IL 78 STAGING DETAILS		
PRE-STAGE 1D		
SCALE: 20' / IN.	SHEET NO. 4 OF 14 SHEETS	STA. 903+00 TO STA. 909+00

F.A.P. RTE.	SECTION	COUNTY	TOTAL SHEETS	SHEET NO.
*22	15BR-1	WHITESIDE	146	41
CONTRACT NO. 64E19			ILLINOIS FED. AID PROJECT	