

GENERAL NOTES

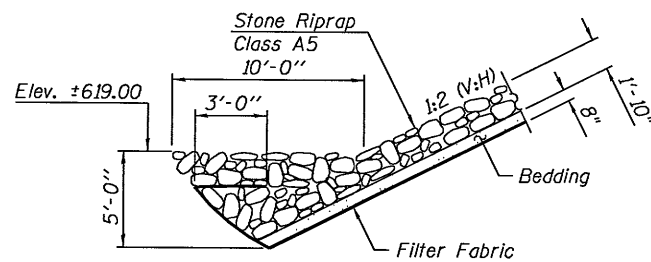
1. Reinforcement bars designated (E) shall be epoxy coated.
2. Layout of slope protection system may be varied to suit ground conditions in the field as directed by the Engineer.
3. The embankment configuration shown shall be the minimum that must be placed and compacted prior to construction of the abutments.
4. The Contractor shall make allowance for the deflection of forms, shrinkage and settlement of falsework, in addition to allowance for dead load deflection. Forms for deck slab shall be removed prior to placement of bridge approach slab.
5. Slipforming of the parapets is not allowed.

TOTAL BILL OF MATERIAL

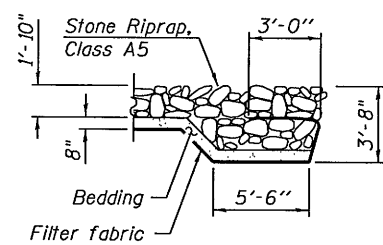
Item	Unit	Super	Sub	Total
Stone Riprap, Class A5	Sq. Yd.		410	410
Filter Fabric	Sq. Yd.		410	410
Removal of Existing Structures	Each	0.5	0.5	1
Structure Excavation	Cu. Yd.		235	235
Cofferdam Excavation	Cu. Yd.		180	180
Cofferdam (Type 1) (Location - 1)	Each		1	1
Cofferdam (Type 1) (Location - 2)	Each		1	1
Concrete Structures	Cu. Yd.		186.8	186.8
Concrete Superstructure	Cu. Yd.	462.8		462.8
Bridge Deck Grooving	Sq. Yd.	660		660
Concrete Encasement	Cu. Yd.		9.8	9.8
Protective Coat	Sq. Yd.	1050		1050
Reinforcement Bars, Epoxy Coated	Pound	105710	19490	125200
Bar Splicers	Each	396	60	456
Bicycle Railing	Foot	156		156
Parapet Railing	Foot	152		152
Furnishing Metal Shell Piles, 14" x 0.250"	Foot		1286	1286
Driving Piles	Foot		1286	1286
Test Pile Metal Shells	Each		4	4
Name Plates	Each	1		1
Geocomposite Wall Drain	Sq. Yd.		62	62
Granular Backfill for Structures	Cu. Yd.		122	122
Temporary Sheet Piling	Sq. Ft.		840	840
Temporary Soil Retention System	Sq. Ft.		55	55
Pipe Underdrains for Structures 4"	Foot		180	180

INDEX OF SHEETS

- S-1 General Plan and Elevation
- S-2 General Data
- S-3 Staging and Temporary Sheet Piling
- S-4 Temporary Concrete Barrier for Stage Construction
- S-5 Top of Slab Elevations
- S-6 Top of Slab Elevations
- S-7 Top of Approach Slab Elevations
- S-8 Superstructure Plan - Bottom Reinforcement
- S-9 Superstructure Plan - Top Reinforcement
- S-10 Superstructure Section
- S-11 Superstructure Bill of Material and Parapet Details
- S-12 Bridge Approach Slab Details
- S-13 Bridge Approach Slab Details
- S-14 Pedestrian Fencing and Railing on Barrier
- S-15 South Abutment Details
- S-16 North Abutment Details
- S-17 Pier No. 1 Details
- S-18 Pier No. 2 Details
- S-19 Pier Details
- S-20 Metal Shell Pile Details
- S-21 Bar Splicer Assembly
- S-22 Soil Boring Logs
- S-23 Soil Boring Logs



SECTION A-A

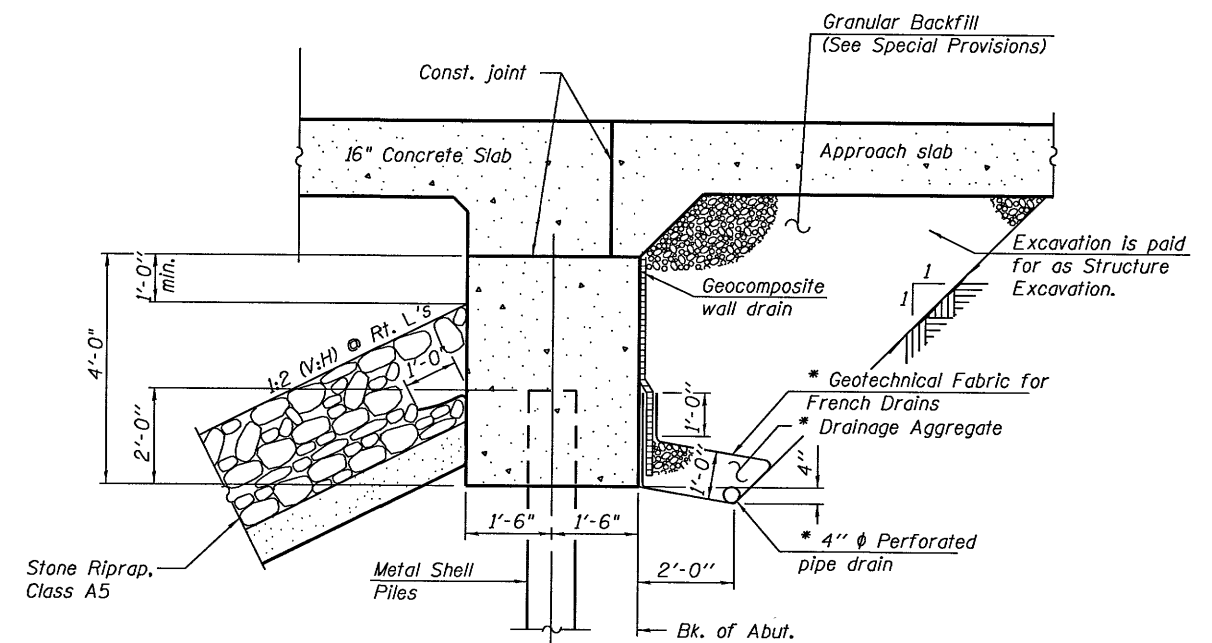


SECTION B-B

WATERWAY INFORMATION

Drainage Area = 10.8 sq. mi. Low Grade Elev. 624.55 @ Sta. 904+85

Flood	Freq. Yr.	Q C.F.S.	Opening Sq. Ft.		Nat. H.W.E.	Head - Ft.		Headwater El.	
			Exist.	Prop.		Exist.	Prop.	Exist.	Prop.
Ten-Year	10	1,190	368	435	624.29	0.51	0.37	624.8	624.7
Design	50	1,890	368	435	625.72	0.23	0.22	626.0	625.9
Base	100	2,200	368	435	626.22	0.16	0.15	626.4	626.4
Overtopping	-	-	-	-	-	-	-	-	-
Max. Calc.	500	2,980	368	435	627.10	0.15	0.15	627.3	627.3



SECTION THRU INTEGRAL ABUTMENT

(Horiz. dim. @ Rt. L's)
*Included in the cost of Pipe Underdrains for Structures.

Note:
All drainage system components shall extend to 2'-0" from the end of each wingwall except an outlet pipe shall extend until intersecting with the side slopes. The pipes shall drain into concrete headwalls. (See Article 601.05 of the Standard Specifications and Highway Standard 601101).

HR GREEN, INC.
PROJECT CONTACT: KEVIN J. BRENN
ILLINOIS DEPARTMENT OF TRANSPORTATION
CLIENT: ILLINOIS DEPARTMENT OF TRANSPORTATION
FILE NAME: 098-0118-01-01-01-01.dgn
PLOT DATE: 08/19/2010 08:49:02
PLOT SCALE: 1/8" = 1'-0"



USER NAME =	DESIGNED - MGH	REVISED
PLOT SCALE =	CHECKED - KJB	REVISED
PLOT DATE =	DRAWN - WJH	REVISED
	CHECKED - KJB	REVISED

**STATE OF ILLINOIS
DEPARTMENT OF TRANSPORTATION**

**GENERAL DATA
STRUCTURE NO. 098-0118**

SHEET NO. S-2 OF S-23 SHEETS

F.A.P. RTE.	SECTION	COUNTY	TOTAL SHEETS	SHEET NO.
22	15BR-1	WHITESIDE	146	60
			CONTRACT NO.	64F19

ILLINOIS FED. AID PROJECT