

STANDARD BAR SPLICER ASSEMBLY

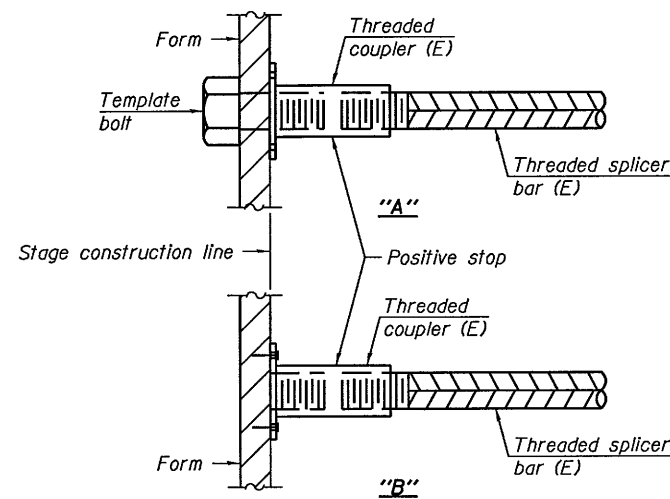
Minimum Lap Lengths					
Bar size to be spliced	Table 1	Table 2	Table 3	Table 4	Table 5
3, 4	1'-5"	1'-11"	2'-1"	2'-4"	2'-3"
5	1'-9"	2'-5"	2'-7"	2'-11"	2'-10"
6	2'-1"	2'-11"	3'-1"	3'-6"	3'-4"
7	2'-9"	3'-10"	4'-2"	4'-8"	4'-6"
8	3'-8"	5'-1"	5'-5"	6'-2"	5'-10"
9	4'-7"	6'-5"	6'-10"	7'-9"	7'-5"

- Table 1: Black bar, 0.8 Class C
- Table 2: Black bar, Top bar lap, 0.8 Class C
- Table 3: Epoxy bar, 0.8 Class C
- Table 4: Epoxy bar, Top bar lap, 0.8 Class C
- Table 5: Epoxy bar, Top bar lap, Class B

Threaded splicer bar length = min. lap length + 1/2" + thread length

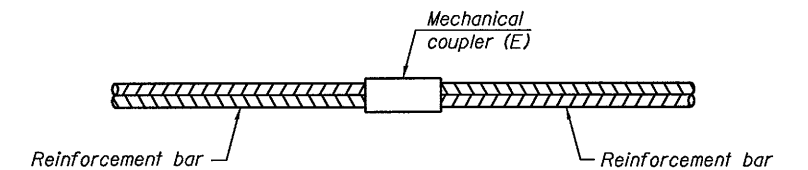
* Epoxy not required on Bar Splicer Assembly components used in conjunction with black bars.

Location	Bar size	No. assemblies required	Table for minimum lap length
Superstructure	#5	174	Table 5
Approach Slabs	#5	172	Table 5
Approach Slabs	#4	50	Table 5
S. Abut.	#7	10	Table 5
N. Abut.	#7	10	Table 5
Pier 1	#4	10	Table 5
Pier 1	#7	10	Table 5
Pier 2	#4	10	Table 5
Pier 2	#7	10	Table 5



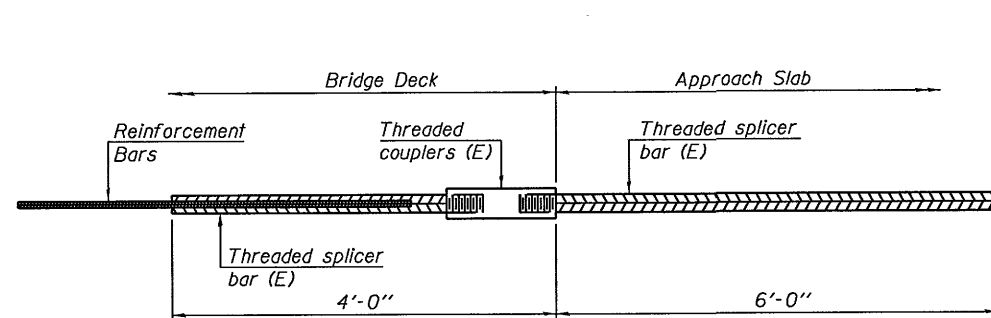
INSTALLATION AND SETTING METHODS

- "A" : Set bar splicer assembly by means of a template bolt.
- "B" : Set bar splicer assembly by nailing to wood forms or cementing to steel forms.
- (E) : Indicates epoxy coating.



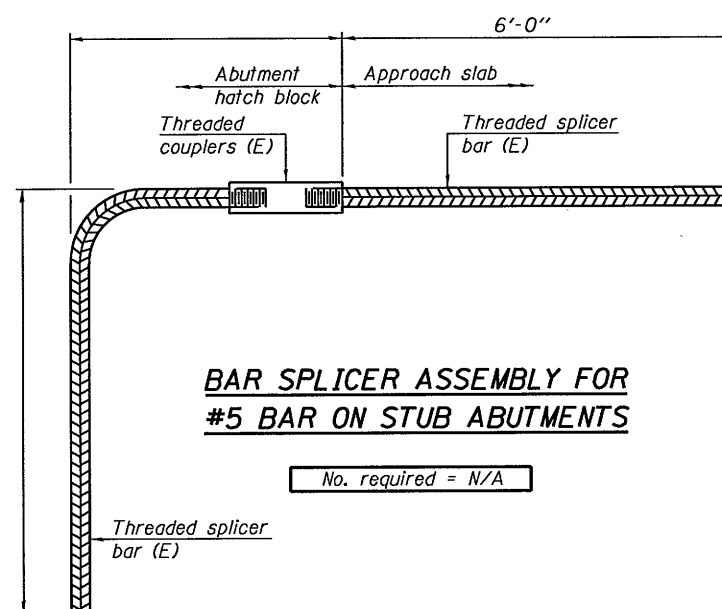
STANDARD MECHANICAL SPLICER

Location	Bar size	No. assemblies required
N/A	N/A	N/A



BAR SPLICER ASSEMBLY FOR #5 BAR ON INTEGRAL OR SEMI-INTEGRAL ABUTMENTS

No. required = N/A



BAR SPLICER ASSEMBLY FOR #5 BAR ON STUB ABUTMENTS

No. required = N/A

NOTES

- Splicer bars shall be deformed with threaded ends and have a minimum 60 ksi yield strength.
- All reinforcement shall be lapped and tied to the splicer bars.
- Bar splicer assemblies shall be epoxy coated according to the requirements for reinforcement bars. See Section 508 of the Standard Specifications.
- See approved list of bar splicer assemblies and mechanical splicers for alternatives.

COMPANY NAME: HR GREEN, INC.
 PROJECT CONTACT: KEVIN J BREHM
 CLIENT: ILLINOIS DEPARTMENT OF TRANSPORTATION
 DATE PLOTTED: 9/13/2012 3:24:55 PM
 FILE: 09810-01-01-155R-01.dgn
 PLOT DRIVER: c:\windows\system32\cmd.exe
 PEN TABLE: illroads.tbl

BSD-1

7-1-10



USER NAME =	DESIGNED - MGH	REVISED
	CHECKED - KJB	REVISED
PLOT SCALE =	DRAWN - WJH	REVISED
PLOT DATE =	CHECKED - KJB	REVISED

STATE OF ILLINOIS
DEPARTMENT OF TRANSPORTATION

BAR SPLICER ASSEMBLY AND MECHANICAL SPLICER DETAILS
STRUCTURE NO. 098-0118

SHEET NO. 5-21 OF 5-23 SHEETS

F.A.P. RTE.	SECTION	COUNTY	TOTAL SHEETS	SHEET NO.
22	15BR-1	WHITESIDE	146	79
			CONTRACT NO. 64F19	
ILLINOIS FED. AID PROJECT				