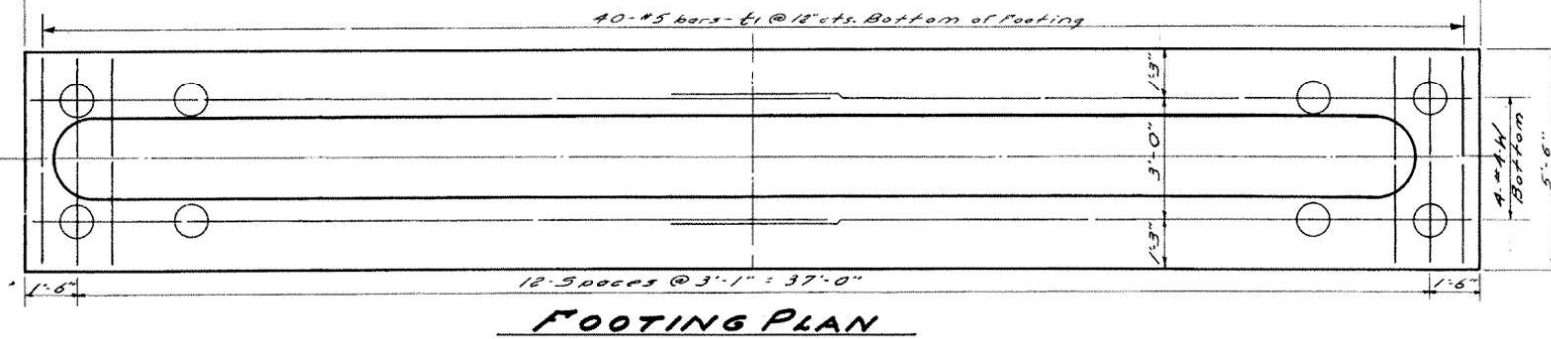
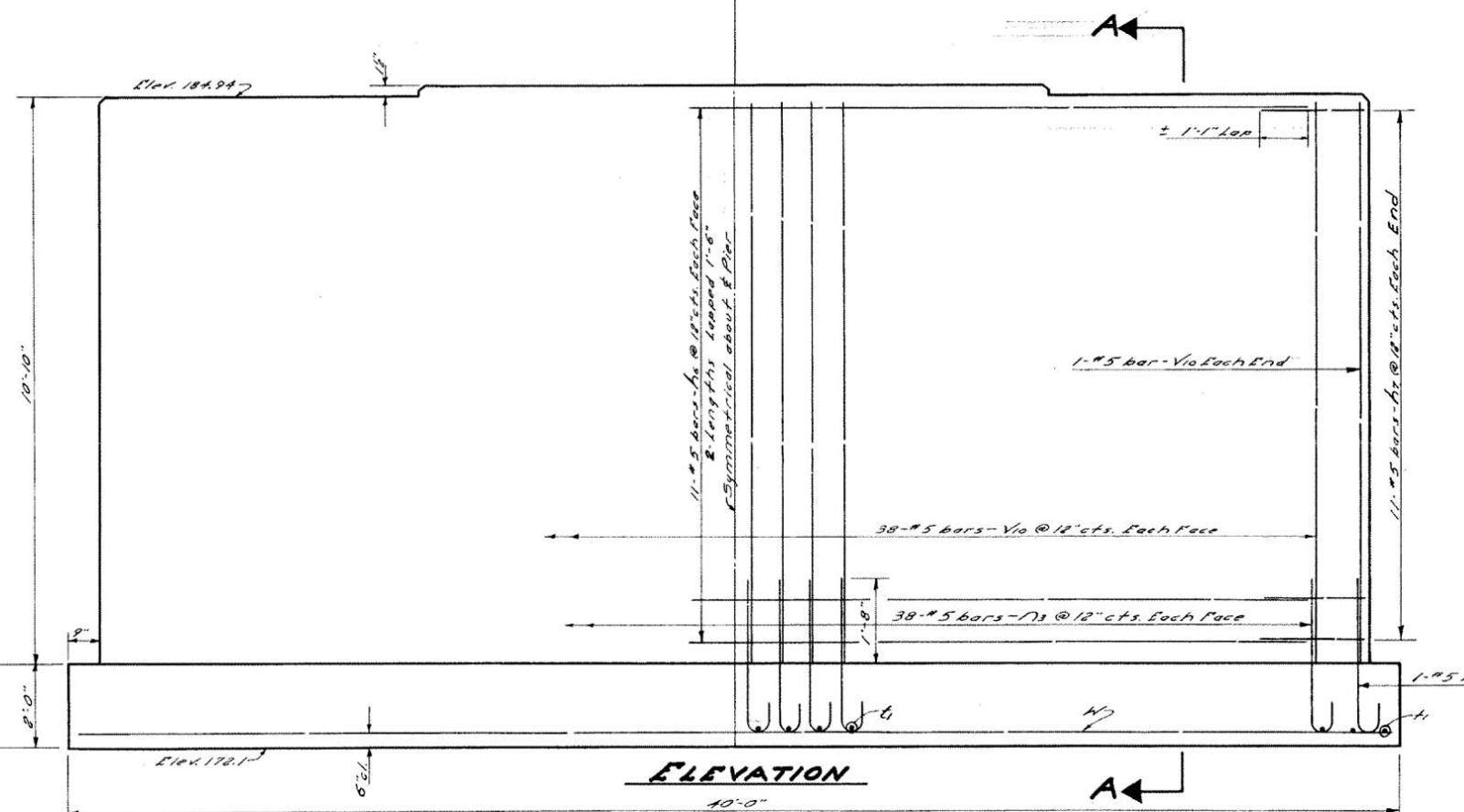
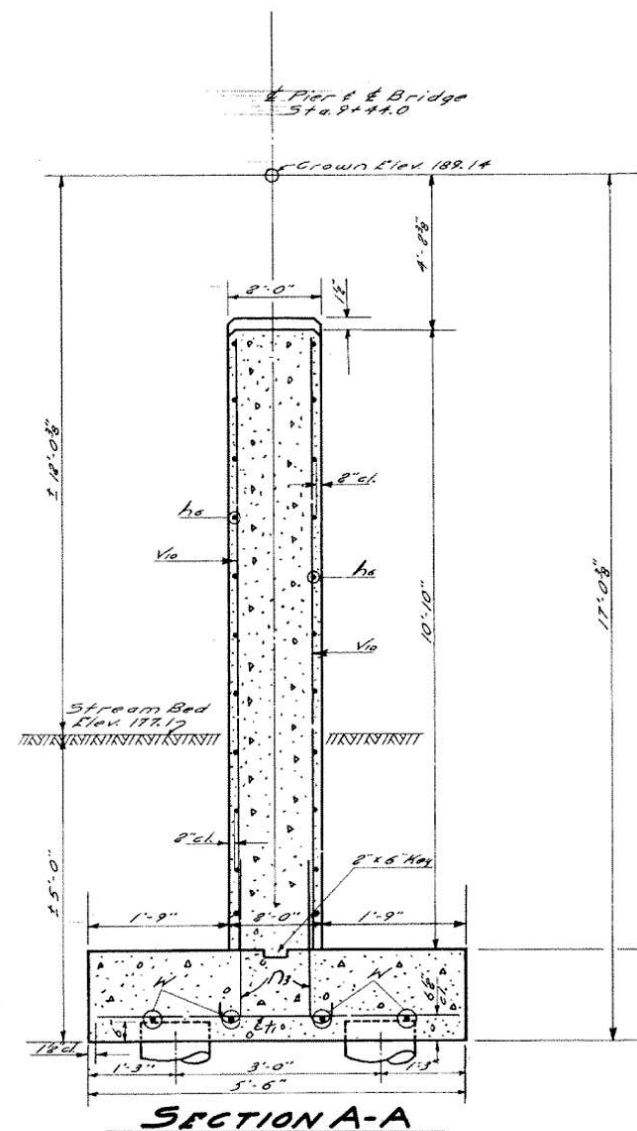
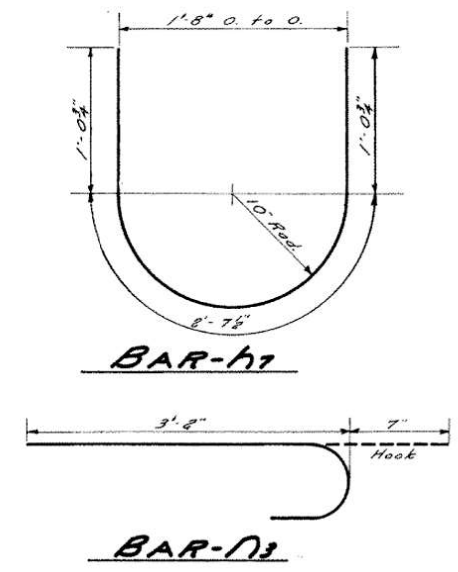
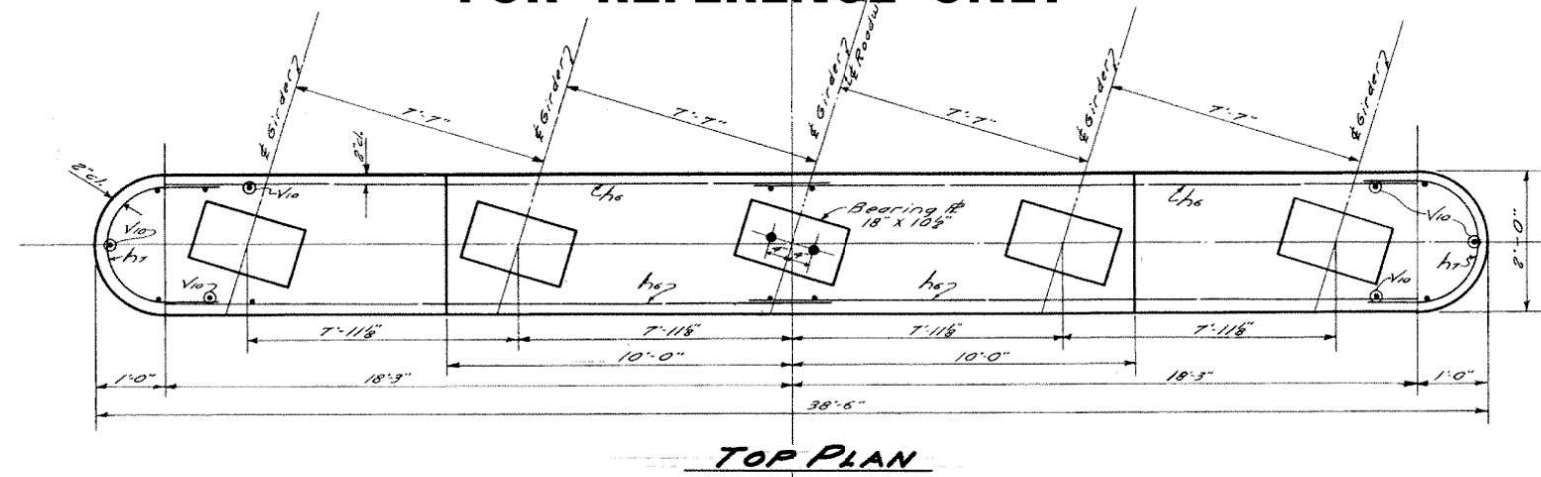


STATE OF ILLINOIS  
DEPARTMENT OF PUBLIC WORKS & BUILDINGS  
DIVISION OF HIGHWAYS  
**FOR REFERENCE ONLY**

ROUTE NO.	SECTION	COUNTY	TOTAL SHEETS	SHEET NO.	SHEET NO. 7 OF SHEETS 8
S.B.I. 3	15BR	Whiteside	27	24	
F.A. 7					
FED. ROAD DIST. NO. 7		ILLINOIS		FED. AID PROJECT	



**BILL OF MATERIAL-PIER**

BAR	NO.	SIZE	LENGTH	SHAPE
V <sub>0</sub>	78	#5	10'-8"	—
h <sub>0</sub>	44	#5	19'-0"	—
h <sub>7</sub>	22	#5	4'-9"	C
N <sub>3</sub>	78	#5	3'-9"	C
f <sub>1</sub>	40	#5	5'-5"	—
W	8	#4	21'-6"	—
Class X Concrete			Cu Yds.	46.7
Reinforcement Bars			Lbs.	8490
Untreated Piles (20' long)			Lin. Ft.	500
Test Piles			Eq.	1
Metal Shoes			Eq.	25

**UNTREATED PILES**  
Minimum Capacity—46 Tons  
Estimated length—80 Ft.  
Number in Pier—26

ONE TEST PILE IN PIER shall be driven in permanent pile location, as directed by the Engineer, before ordering the remainder of Piles.  
Each pile shall be shod with a Metal Shoe per detail shown on SHEET-3

**FRENCH CREEK**  
**S.B.I. RT. 3 (C.A. RT. 4) SEC. 15BR**  
**WHITESIDE COUNTY**  
**STATION 9+44**

DESIGNED *Joseph J. Rensay*  
EXAMINED *July 10 1953*  
CHECKED *Jackie Nightingale*  
DRAWN *J.D.N. C. Pulley*  
CHECKED *J.J. Rensay*  
APPROVED *W.E. Hanson*  
*E. Hansen*  
*J.M. Baker*